



# Concrete Repair & Protection

**High Build Repair Mortars**

**Patching / Rapid Setting Mortars**

**Fairing Coats**

**Flowable Micro Concrete**

**Corrosion Inhibiting Impregnation**

**Embedded Galvanic Anodes**

**Steel Primers & Bonding Aids**

**Concrete Anti-Carbonation Coatings**

**Anti-Graffiti Coatings / Graffiti Removal**

**Epoxy Resin Repair Systems**

**Crack Injection & Resin Bonding**

## High Build Repair Mortars



**Size**  
**18kg**

Primer: If Required - See data  
842 - Concrete Substrate  
841 - Steel Substrate

**Size**  
**25kg**

Primer: If Required - See data  
842 - Concrete Substrate  
841 - Steel Substrate



**Size**  
**25kg**

Primer:  
610 - Concrete Substrate  
610 - Steel Substrate

**Size**  
**18kg**

Primer:  
Concrete Substrate:  
Nitobond HAR  
Steel Substrate:  
Nitoprime Zincrich

**Size**  
**25kg**

Primer:  
No primer required



BEFORE

AFTER



**Size**  
**25kg**

Primer:  
No primer required

### Flexcrete Monolite

A low density, very high build, shrinkage compensated polymer modified mortar for the repair, rendering and profiling of vertical, horizontal and soffit surfaces. Ideal for applications of up to 100mm in vertical, horizontal and overhead situations. No inter-layer priming is required. Complies with **DTP Standard** (BD 27/86) Materials for the Repair of Concrete Highway Structures.

*Yield: 16.7ltr = 1m<sup>2</sup> @ 16.7mm thickness*

### Flexcrete Monomix

A structural grade repair cement which is low density, high strength and shrinkage compensated for the repair, rendering and profiling of vertical, up to 80mm on horizontal and soffit surfaces. It is polymer modified and fibre reinforced repair mortar which produces a waterproof, dense matrix with excellent protection from impact and the ingress of acid gases and chlorides. Complies with **DTP Standard** (BD 27/86) Materials for the Repair of Concrete Highway Structures.

**BBA, DWI, WRAS** approved product.

*Yield: 16.5ltrs = 1m<sup>2</sup> @ 16.5mm thickness*

### Sika Monotop 615

One component cement based polymer modified high build repair and reprofiling mortar, meeting the requirements of Class R3 of BS EN 1504-3. Ideal for use overhead and vertical repairs.

*Yield: 15ltr = 1m<sup>2</sup> @ 15mm thickness*

### Fosroc Renderoc HB

For the reinstatement of large areas of concrete and for small, localised patch repairs. It is specifically designed for vertical and overhead high-build applications. The mortar is suitable where exceptional chloride and carbon dioxide resistance is required. Up to 80mm in one application on vertical surface and 50mm overhead.

*Yield: 14.5ltr = 1m<sup>2</sup> @ 14.5mm thickness*

### Norsekem Matchpatch Grey & White

Pre-packaged, polymer modified repair cement for rapid structural repairs to in-situ and pre-cast concrete. Supplied in grey and white for on-site blending to provide a high quality aesthetic finish. It is also suitable for repairs to damaged, honeycombed or "boney" concrete in new build construction as no primer is required. Complies with **DTP Standard** BD27/86.

*Yield: 12.5ltr = 1m<sup>2</sup> @ 12.5mm thickness*

### Flexcrete Fastfill

Rapid setting, Portland cement-based structural mortar for the durable repair of concrete which cannot be taken out of service for long periods, or in areas subjected to heavy wear such as roads, runways, bridges, decks, floors and footpaths. Sets in 10 minutes at 20°C yielding a durable, high strength mortar. Complies **DTP Standard** (BD 27/86) **BBA, WRAS** and **DWI** approved product.

*Yield: 13.3ltr = 1m<sup>2</sup> @ 13.3mm thickness*

## High Build Repair Mortars

### Parex Rapid Lightweight Repair Mortar

Lightweight Mortar Rapid is a fast setting high build, polymer and fibre modified, cementitious concrete repair system also capable of being applied as a fair faced finish in vertical and overhead situations. Can achieve 9N/mm<sup>2</sup> after 1 hour.

*Yield: 13.5ltr = 1m<sup>2</sup> @ 13.5mm thickness*

### Parex Lightweight Mortar 14

A one pack, high build, polymer modified cementitious repair system, capable of being applied as a fair faced finish in vertical and overhead situations. Gives protection to exposed reinforcing steel preventing further deterioration. It is chloride free and can be safely used in contact with steel reinforcement. The placed mortar has good freeze-thaw stability and low absorption giving protection against atmospheric pollutants.

*Yield: 15ltr = 1m<sup>2</sup> @ 15mm thickness*

### Parex Lightweight Mortar 18

A one pack, high build, polymer modified cementitious repair system, capable of being applied as a fair faced finish in vertical and overhead situations. Gives protection to exposed reinforcing steel preventing further deterioration. The use of lightweight fillers enable high build applications, with high quality finishes. Chloride free and can be safely used in contact with steel reinforcement. Good freeze-thaw stability

*Yield: 16ltr = 1m<sup>2</sup> @ 16mm thickness*

### Ronacrete RonaBond HB40

Prepacked high build, high strength concrete repair mortars for repairing concrete and protecting reinforcing steel. They are used to repair concrete on vertical surfaces and are particularly suited to the repair of overhead concrete where ease of application is as important as high strength. They can be applied in thick-section layers up to 75mm on walls and soffits, without shuttering.

*Yield: 13ltr = 1m<sup>2</sup> @ 13mm thickness*

Size

**18kg**

Primer:

Acrylic Latex - Concrete  
Parex Steel Primer - Rebar



Size

**18kg**

Primer:

Acrylic Latex - Concrete  
Parex Steel Primer - Rebar



Size

**25kg**

Primer:

Acrylic Latex - Concrete  
Parex Steel Primer - Rebar



Size

**18kg**

Primer:

RonaBond Primer - Concrete  
RonaBond Primer - Rebar

## Patching / Rapid Setting Mortars

### Flexcrete Monomix

A structural grade repair cement which is low density, high strength and shrinkage compensated for the repair, rendering and profiling of vertical, horizontal and soffit surfaces. It is polymer modified and fibre reinforced repair mortar which produces a waterproof, dense matrix with excellent protection from impact and the ingress of acid gases and chlorides. Complies with **DTP Standard** (BD 27/86) Materials for the Repair of Concrete Highway Structures.

**BBA, DWI, WRAS** approved product.

*Yield: 16.5ltrs = 1m<sup>2</sup> @ 16.5mm thickness*

### Fosroc Renderoc GP

General purpose concrete reinstatement mortar which can be used as a render as well as for all types of patch repairs. Designed for vertical, overhead or horizontal use. It can be applied up to 20 mm thickness in sections overhead and 30 mm thickness in vertical sections.

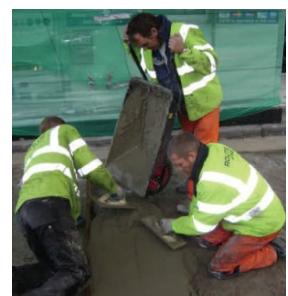
*Yield : 16 tr = 1m<sup>2</sup> @ 16mm thickness*

Size

**25kg**

Primer: If Required - See

data  
842 - Concrete  
841 - Rebar



Size

**25kg**

Primer:

Nitobond HAR - Concrete  
Nitoprime Zincrich - Rebar



## Patching / Rapid Setting Mortars



Pack Size

25kg

Size

25kg

Size

25kg

Size

25kg

Size

25kg

Size

25kg

### Flexcrete Fastfill

Rapid setting, Portland cement-based structural mortar for the durable repair of concrete which cannot be taken out of service for long periods, or in areas subjected to heavy wear such as roads, runways, bridges, decks, floors and footpaths. Sets in 10 minutes at 20°C yielding a durable, high strength mortar. Complies **DTp Standard** (BD 27/86) **BBA**, **WRAS** and **DWI** approved product. Can be applied up to 50mm overhead, 100mm horizontal 300mm when bulked out with aggregate.

*Yield: 13.3ltr = 1m<sup>2</sup> @ 13.3mm thickness*

### Flexcrete Monomix HD

A structural grade repair cement which is high strength and shrinkage compensated for the repair, rendering and profiling of vertical, horizontal and soffit surfaces. Requires only the addition of clean water to form a thixotropic mortar allowing easy high build trowel application, with no inter layer priming. Polymer modified and fibre reinforced which produces a waterproof, dense mortar. It is trafficable which makes it ideal for floor repairs. Complies with **DTp Standard** (BD 27/86)

*Yield: 13.1ltr = 1m<sup>2</sup> @ 13.1mm thickness*

### Parex TecFast Concrete

Rapid setting, free-flowing concrete, for thick section placement, where high early strength gain is required. It can be placed at temperatures down to 5°C and allows road opening in one hour under normal conditions. Compliant with EN1504-3 3.2, 4.4, 7.1 and 7.2. TecFast Concrete also holds Highways Agency, Transport for London LUL and Link-Up Rail approval. Typical applications include the installation of road furniture, barriers and stanchion posts, back-filling manhole frames, recasting of pit-blocks and concrete elements. TecFast concrete can be placed in thicknesses of 20-650mm in a single pour and achieves a final compressive strength greater than 50N/mm<sup>2</sup>

*Yield: 11.5 ltr = 1m<sup>2</sup> @ 11.5mm thickness*

### Sika Rapid Repair Mortar

Fast setting cementitious repair mortar idea for floor slabs where an early high strength repair is required. Also suitable for bedding of manhole covers.

*Yield: 11.9 ltr = 1m<sup>2</sup> @ 11.9mm thickness*

### FEBSET 45

Specially formulated repair mortar, based on magnesia-phosphate pre-mixed with selected aggregates, which gives controlled, extremely high early strengths in temperatures ranging from -20°C (or lower) up to over 30°. Ideal for freezer room and temperature controlled areas.

*Yield: 11.6 ltr = 1m<sup>2</sup> @ 11.6mm thickness*

### C40 Concrete Mix

C40 concrete complies with BS5838 : Part 1 : 1980 and is formulated to produce good quality concrete for applications where a higher strength is required. 40N/28 days.

*Yield: 11ltr = 1m<sup>2</sup> @ 11mm thickness - (56 x 25kg bags per pallet)*

## Patching / Rapid Setting Mortars

### Parex Speedcrete S Acrylic

A fine, quick setting, rapid hardening concrete incorporating ASR resistant 6mm aggregate and a dispersible acrylic polymer powder. Strength gain of 25N/mm<sup>2</sup> in 2 hours. Mixed consistency of "mobile concrete" suitable for downward facing holes, in concrete roads, runways, bridge decks etc. Complies with **DTP Standard** (BD 27/86) LUL approved product.

*Yield: 12ltrs = 1m<sup>2</sup> @ 12mm thickness*

Pack Size  
**25kg**

# PAREX®

### Norsekem Fastplug

A fast setting, shrinkage compensated structural grade repair cement. It is waterproof, slump free, and has exceptional compressive and adhesion strengths making it suitable for use in vertical, overhead and other difficult areas of repair without the use of primer, special lightweight aggregates or support. Compatible with **Matchpatch** for finishing. Complies with clause 6 of **DTP Standard** (BD 27/86) Materials for the Repair of Concrete Highway Structures.

*Yield :- 12.5 ltrs*

Pack Size  
**25kg**



### Norsekem Matchpatch Grey & White

A fast setting structural grade repair cement Colour matching for a fair faced finish is easily achieved by mixing shades of grey and white at different ratios using trial mixes. It is waterproof and with characteristics of low slump, superior adhesion and high build, it can be used in vertical, overhead and other difficult areas of repair without the use of primer. Complies with clause 6 of **DTP Standard** (BD 27/86) Materials for the Repair of Concrete Highway Structures.

*Yield: 12.5ltrs = 1m<sup>2</sup> @ 12.5mm thickness*

Pack Size  
**25kg**



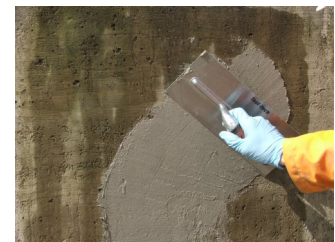
## Fairing Coats

### Flexcrete Monolevel FC

An engineering quality fairing coat for filling minor blow holes and defects, and repairing surface imperfections up to 6mm to provide an even surface for applying membranes and coatings such as Flexcrete 851. It is shrinkage compensated and provides good protection to acid gases, moisture, chlorides and freeze / thaw cycles. Can be applied vertically or horizontally by brush or trowel.

*Yield: 15.5 ltrs = 7.75m<sup>2</sup> @ 2mm thickness*

Pack Size  
**25kg**



### Sika Monotop 620

Cementitious polymer modified fairing coat for the repair of minor defects, honeycombed concrete and repairing pores. Exterior and interior use. Can be applied from 1.5mm - 5mm. Fully compatible with the Sika repair range of products.

*Yield: 12.5ltr = 12.5m<sup>2</sup> @ 1mm thickness*

Pack Size  
**25kg**



### Fosroc Renderoc FC

Designed for application in thin layers to produce a fair-faced appearance to concrete surfaces or masonry surfaces in readiness to receive a protective/ decorative coating. Surface imperfections up to 3 mm in depth can be filled with the scrape-coat application.

*Yield: 15ltr = 10m<sup>2</sup> @ 1.5mm thickness*

Pack Size  
**25kg**



## Fairing Coats



Pack Size

25kg

### Flexcrete Monolevel RM

A pre-blended fair faced render mortar with enhanced polymer properties allowing easy high build trowel application. Provides good protection to acid gases, moisture, chlorides along with good impact resistance due to its fibre reinforcement. Particularly suitable for levelling exposed aggregate panels that are no longer wanted.

*Yield: 14.5ltrs = 2.4m<sup>2</sup> @ 6mm thickness*

### Flexcrete Monolevel 844SP

A single component, thixotropic, polymer modified, cementitious repair mortar with high adhesive properties, allowing it to be used as a waterproof screed and anti-carbonation coating, as well as a filler for blowholes and repair of small cavities and honeycombed concrete. Can be used in vertical and horizontal situations. This product also re-instates cover. 1mm of 844SP is equal to 1000mm of concrete cover. (water permeability coefficient)

**WRAS, DWI approved.**

*Yield: 15ltrs = 15m<sup>2</sup> @ 1mm thickness*

Pack Size

25kg



Pack Size

25kg

### Ronacrete RonaBond EasySkim FC

Pre-packed fairing coat mortar which is applied as a skim coat in thicknesses up to 3mm to provide a smooth, hard finish to damaged, blemished and repaired concrete surfaces. RonaBond EasySkim FC is used as a levelling mortar prior to the application of protective coatings or paints. The material is supplied in pre-blended form.

*Yield: 13ltrs = 6m<sup>2</sup> @ 2mm thickness*

Pack Size

20kg

### Parex SkimCoat Plus

A single component Portland cement based powder mix which is polymer modified to form a fine textured fairing coat. Gives a fair face finish that acts as a protective over coating. Additional protective or decorative coatings may be applied to the hardened fairing coat.

*Yield: 14ltrs = 7m<sup>2</sup> @ 2mm thickness*

Pack Size

25kg Grey

25kg White

### Norsekem FILL 'n' RUB "White & Grey"

A fine grade polymer modified cement provides a convenient method of filling blowholes and small surface defects in precast or insitu cast concretes, as well as providing an even standardised colour and aesthetic finish. Available in Grey and White versions to enable colour matching with the parent concrete. Best described as "engineering polyfilla" and ideal for bag rubbing techniques. Complies with Clause 6 of the **DTp Standard BD 27/86**

*Yield: (Grey) 14ltrs = 10m<sup>2</sup> @ 1.4mm thickness*

*(White) 15.9ltr = 10m<sup>2</sup> @ 1.6mm thickness*



Pack Size

25kg

### Flexcrete Monolevel 250F

A single component, polymer modified cementitious mortar for the filling of blow holes, cracks, mapping defects, blemishes and levelling out uneven surfaces in existing paint finishes as well as concrete and mosaic substrates prior to application of subsequent protective coatings and paint finishes.

*Yield : 16.2 ltrs*

## Flowable Micro Concrete

### Parex LA Repair Concrete

Low-alkali micro concrete which is self-compacting, non-shrink and suitable for pouring or pumping. It is designed for use on bridges or soffits and is suitable for cathodic protection projects. The material conforms to; EN1504-3 repair principles 3.2, 4.4, 7.1, 7.2, **DTP approved** BD27/86 Clause 4 and "Specification for Highways Works" Clause 1704.6.

*Yield: 12.5ltrs = 1m<sup>2</sup> @ 12.5mm thickness*

Pack Size

25kg

# PAREX®

### Sika Armorex Armocrete

Free flowing micro concrete for large shuttered repairs to structural concrete. Can also be used for thick section grout and void filling.

*Yield: 12ltrs = 1m<sup>2</sup> @ 12mm thickness*

Pack Size

25kg



### Fosroc Renderoc LA / LA55

The highly fluid nature of Renderoc LA systems obviates the need for compaction and vibration even where access to the repair zone is restricted or where reinforcement is congested. **DTP approved** BD27/86 clause 4.

*Yield: 12ltrs = 1m<sup>2</sup> @ 12mm thickness*

Pack Size

25kg



## Corrosion Inhibiting Impregnation

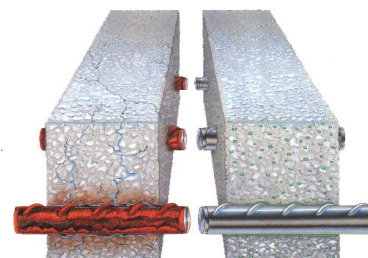
### Flexcrete Cemprotec MCI® 2020

A clear patented, water based, organic surface treatment for existing concrete structures. Based on time proven corrosion inhibiting technology. Designed to migrate through concrete to the steel reinforcement forming a monomolecular layer which helps reduce corrosion. Ideal for use in aggressive environments such as marine and highway structures.

*Coverage: 3.68m<sup>2</sup>/ltr*

Pack Size

25ltr



### Sika FerroGard 903

Corrosion inhibiting complex designed for impregnation of reinforced concrete. It penetrates to form a thick monomolecular chemical protective film on the reinforcement surface. and delays the start of corrosion and reduces corrosion rates. This increased corrosion protection significantly increases the service and maintenance life cycle of structures by 15 years when used as part of a Sika repair system.

*Coverage: 0.5m<sup>2</sup>/kg*

Pack Size

25kg

220kg



## Embedded Galvanic Anodes For Corrosion Protection

### Sika® Galvashield® XP/XPT/XP2/XP4

Embedded galvanic anodes are used in concrete rehabilitation to prevent the formation of new corrosion sites adjacent to completed patch repairs. Sika® Galvashield® XP/XPT/XP2/XP4 anodes consist of a sacrificial zinc core that is activated by the surrounding specially formulated cementitious mortar. The anode is quickly and easily fastened to the exposed reinforcing steel. Once installed, the zinc core corrodes preferentially to the surrounding rebar, thereby providing galvanic corrosion prevention to the adjacent reinforcing steel and mitigating 'Incipient Anode' formation.



| Product | Pack Size   |
|---------|-------------|
| XP      | 20no. / Box |
| XP2     | 20no. / Box |
| XP4     | 20no. / Box |
| XPT     | 30no. / Box |



## Steel Primers & Bonding Coats



|           |
|-----------|
| Pack Size |
| 5kg       |

### Flexcrete Steel Reinforcement Protector 841

Primarily used on old structures prior to the application of the relevant repair mortar. It forms a hard, highly alkaline, flexible coating with excellent protection from acid gases, moisture, chlorides and will passivate the steel chemically to prevent further rust formation. Brush applied.

**BBA and DWI approved product.**

*Coverage: 5kg in two coats will cover approx. 45 linear metres of 10mm steel bar.*



|           |
|-----------|
| Pack Size |
| 4kg       |

### Flexcrete Bonding Bridge 842

Designed to enhance the bond between high porosity concrete and the repair mortar or other cement based materials. It prevents rapid drying of the mortar at the repair/concrete interface which could otherwise affect the bond integrity. Brush applied.

**BBA certified product.**

*Coverage: 16m<sup>2</sup>*



|           |
|-----------|
| Pack Size |
| 5kg       |

### Parex Steel Primer

An anti-corrosion primer incorporating an advanced corrosion inhibitor designed to coat and protect exposed steel reinforcement. It is brush-applied and has a working life of 30 minutes when applied at ambient temperatures of 20°C

*Coverage: 1.5kg / m<sup>2</sup> @ 1mm*

|           |
|-----------|
| Pack Size |
| 25kg      |

### Sika Monotop 610

Single part steel primer and concrete bonding aid prior to the application of Sika Mototop system.

*Coverage: 2kg / m<sup>2</sup>*



|           |
|-----------|
| Pack Size |
| 800ml     |
| 1.9ltr    |

### Fosroc Concrete Repair System Primers

**Nitoprime Zincrich** is a one part brush applied steel reinforcement coating prior to the application of Renderoc Concrete Repair systems.

*Coverage: 8m<sup>2</sup> / ltr*

|            |
|------------|
| Pack Size  |
| AR - 5ltr  |
| HAR - 5ltr |

**Nitobond AR & HAR** are liquid applied primers and curing agents for use in conjunction with the use of Renderoc Concrete Repair systems. See data for application rates.

|           |
|-----------|
| Pack Size |
| 2kg       |
| 10kg      |

### Ronabond Primer

Concrete and steel reinforcement primer, brush applied to promote adhesion prior to repairs.

*Coverage: 1.5kg / m<sup>2</sup>*



|           |
|-----------|
| Pack Size |
| 5ltr      |
| 25ltr     |

### SBR Liquid

When mixed with OPC to a slurry like consistency acts as a cost effective bonding aid for new to old concrete, floor screeds and renders.

*Coverage: 1:1 mix / 1kg OPC - 1ltr SBR = 3-4m<sup>2</sup>*

|           |
|-----------|
| Pack Size |
| 0.8kg     |
| 4kg       |

### Parex Bondcoat UF

Two part epoxy adhesive suitable for bonding new to old, brick slips and areas where a strong bond is required. Ideal for bonding of per-cast units.

*Coverage: Refer to data*

## Concrete Anti-Carbonation Coatings

### Flexcrete Monodex Ultra

One component, decorative coating which offers an economic solution for the protection of buildings and other structures with a service life up to 10 years. To inhibit the growth of mould and lichen, it contains an active biocide which is retained in-film. Elastomeric properties permit substrate movement and bridging of hairline cracks. technically advanced, minimal VOC, water-based decorative coating which protects against carbonation and water ingress without entrapping moisture.

Coverage: 15ltr = 75m<sup>2</sup> per coat

### Flexcrete Monodex Smooth

Single component, high build, decorative, waterproof coating based on an advanced micropolymer resin binder which cross-links to give outstanding durability over a service life up to 15 years. The elastomeric nature facilitates substrate movement and bridging of hairline cracks.

Coverage: 15ltr = 75m<sup>2</sup> per coat

### Flexcrete Monodex Clear

Transparent, weather resistant, elastomeric waterborne coating for use where it is important to maintain the surface appearance of the concrete substrate, whilst still providing excellent anti-carbonation and weatherproof protection. Water-based, virtually odourless coating with minimal VOC content. Equipment easily cleaned with water and no flash point.

Coverage: 0.2ltr / m<sup>2</sup> / per coat

### Flexcrete Monodex Textured

Highly engineered, waterborne, acrylic based textured coating. It waterproofs surfaces for at least 10 years, yet allows high levels of entrapped substrate moisture to escape without causing blistering or delamination. It also incorporates an advanced in-film, non-leaching biocide, inhibiting the growth of mould and algae for many years. Able to hide surface defects, scars, wall repairs and alterations, vastly improving the aesthetics of buildings.

Coverage: 2m<sup>2</sup> / ltr / per coat

### Flexcrete Bond-Prime

Single component, water based, epoxy modified polymeric primer for sealing and stabilising substrates prior to the application of the specialist decorative and protective membranes in the Flexcrete range.

Coverage: 5m<sup>2</sup> / ltr

### Sikagard®-675 W ElastoColor

One part, plasto-elastic water dispersed coating based on styrene acrylate dispersion for the protection and enhancement of fairfaced concrete. Environmentally friendly and easy to apply.

Coverage: 0.2 - 0.25kg / m<sup>2</sup> / coat

### Sikagard®-550 W Elastic

One part, plasto-elastic coating based on UV-curing acrylic dispersion with excellent crack-bridging properties even at temperatures below 0°C.

Coverage: 0.25 - 0.35kg / m<sup>2</sup> / coat

Pack Size

15ltr



Pack Size

15ltr



Pack Size

15ltr



Pack Size

15ltr



Pack Size

5ltr

25ltr



Pack Size

15ltr

Primer:  
Sikagard 552w  
Sikagard 551 s

Pack Size

15ltr

Primer:  
Sikagard 552w  
Sikagard 551 s



## Anti-Graffiti Coatings



Size

15 ltr

25 ltr

### Tensid AGS Graffi Coat 1

One part anti-graffiti coating which can be used on all outdoor masonry surfaces where a sacrificial invisible protection (up to 10 years) is required. Graffi Coat 1 is a permeable (allows the surfaces to breathe) and fully reversible water based crystalline micro wax coating suitable for all masonry surfaces and most porous surfaces. Graffi Coat 1 helps prevent penetration of atmospheric pollutants into the substrate and eases subsequent cleaning.

Coverage: Refer to data

### Tensid AGS Graffi Coat 101

Waterborne high performance, 2 pack polyurethane permanent coating available in clear gloss. It is also available in most British Standard colours. Suitable for application to most surfaces which are normally painted such as wood, metal, plaster, concrete and previously painted surfaces. Not recommended on brick or natural stone if permeability is of importance.

Coverage: Refer to data



Size

4kg+1kg Act

### Tensid AGS Graffi Coat 102

One component, moisture cured polyurethane coating. This high performance, solvent free coating provides a clear matt and hard scratch resistant finish, with high resistance to chemicals and graffiti. Graffi Coat 102 can also be used as a hygiene coating, and as a general protective coating suitable for most substrates. Graffi Coat 102 is also suitable for application to brickwork and concrete, but must first be primed with Graffi Prime 102.

Coverage: Refer to data



Size

4kg+1kg Act

### Tensid AGS Graffi Coat 103

High solids, and high performance non sacrificial polysiloxane anti graffiti coating, available in clear gloss also in most British Standard, RAL and NCS colours. Suitable for application to most non absorbent surfaces which are normally painted such as wood, metal, plaster and concrete. Not recommended on brick or natural stone if permeability is of importance.

Coverage: Refer to data

## Graffiti Removers



Size

4 x 5 ltr

### Tensid GRAFFI GREEN Multi-purpose

A liquid graffiti remover for hard surfaces. GRAFFI GREEN removes most types of graffiti made with felt pen and spray paint. It is ideal for use on most hard non porous surfaces and can also be used on other non-absorbent surfaces. Safe for use on polycarbonate.

Usage: 3– 10m<sup>2</sup> / ltr



Size

4 x 5 ltr

### Tensid GRAFFI CLEAN 300 graffiti remover.

Get graffiti off masonry! NMP-free viscous graffiti remover/paint stripper for use on masonry surfaces. It is a gelled graffiti remover that will cling to the surface while it works to remove graffiti.

Usage: 2 - 6m<sup>2</sup> / ltr

## Epoxy Resin Repair Systems

### Parex Epoxy Mortar E

Three part epoxy mortar ideal for use where high strength, high abrasion and chemical resistant repair are required. Ideal for warehouses, loading bays, car park decks and repairs of steps.  
*Yield: 16kg - 8ltrs = 1m<sup>2</sup> @ 8mm thickness*  
*28.5kg - 14.25ltrs = 1m<sup>2</sup> @ 14.22mm*

| Size   |
|--------|
| 16kg   |
| 28.5kg |



### Norsekem Epoxy Mortar

High strength, chemical resistant, self-priming, resin rich epoxy repair mortar for economic repair to spalled concrete, car park decks and ramps and areas that are subject to high levels of traffic.  
*Yield: 9ltr = 1m<sup>2</sup> @ 9mm thickness*

| Size |
|------|
| 20kg |



### Sikadur®41 CF

Thixotropic, three part patching and repair mortar, based on a combination of epoxy resins and special fillers, designed for use at temperatures between +10°C and +30°C. Ideal for vertical and overhead use or as an abrasion and impact resistant wearing course. Available in Normal and Rapid set Grade.  
*Yield: 2kg / m<sup>2</sup> per mm*

| Size |
|------|
| 10kg |



### FEB Febox NF

Non slump epoxy resin bedding compound. It is a two component, fine aggregate filled, fast curing material, ideal for a variety of bedding, gap filling and concrete repair applications.  
*Yield: 1.66ltr / 3kg*

| Size    |
|---------|
| 2 x 3kg |
| 10kg    |



### Sikadur 31

Solvent-free, moisture tolerant, thixotropic, structural two part adhesive and repair mortar, based on epoxy resins and special fillers, Bonds to almost any surface. Normal and rapid set grades available.  
*Yield: 6kg = 3.16ltrs / 1.2kg = .63ltr*

| Size  |
|-------|
| 1.2kg |
| 6kg   |



### Standard Epoxy primer / Bonding aid

Two part, general purpose epoxy bonding aid for screeds and high impact areas of repair. Will also assist with stopping gassing from general repairs.  
*Coverage: Refer to data*

| Size  |
|-------|
| 2.5kg |
| 5kg   |



### Fosroc Nitomortar S & HB

For the fast and permanent reinstatement of concrete, particularly where high strength, abrasion-resistance and resistance to chemicals is required. These products are designed for horizontal vertical use, although generally applied in thinner sections.  
*Yield: 8ltr = 1m<sup>2</sup> @ 8mm thickness Nitomortar S*  
*4ltr = 1m<sup>2</sup> @ 4mm thickness Nitomortar HB*

| Size     |
|----------|
| 16kg - S |
| 8kg - HB |



### Parex Epoxy Adhesive 305

Two part epoxy adhesive suitable for bonding new to old, brick slips and areas where a strong bond is required. Ideal for bonding of per-cast units.  
*Yield: 1.5kg = 1ltr - 4kg = 3ltr*

| Size  |
|-------|
| 1.5kg |
| 4kg   |



## Crack Injection & Resin Bonding

# PAREX®



# PAREX®



| Size           |
|----------------|
| Std = 1.13kg   |
| Std = 6.88kg   |
| Thixo = 1.19kg |

| Size     |
|----------|
| 10 x 1kg |

| Size         |
|--------------|
| 1.2kg Normal |
| 6kg Normal   |
| 1.2kg Rapid  |
| 6kg Rapid    |

| Size  |
|-------|
| 380ml |

| Size          |
|---------------|
| LV Kit = 3ltr |
| TH Kit = 3ltr |

| Size  |
|-------|
| 1.9kg |

### Parex Epoxy Injection Resin/ Thixotropic Injection Resin

A two part, volume stable, very low viscosity, high strength epoxy resin grout. The thixotropic version will remain in place without use of a totally grout tight shutter. Used for free flow or crack injection of voids from 0.1mm to 10mm in concrete and for rebonding lifted floor toppings. Can also be used for under plate grouting of thin sections where a cementitious grout can not be used. Typical strengths are 90N/mm<sup>2</sup> at 24hrs and 105N/mm<sup>2</sup> at 7 days.

*Yield: 5.62 ltrs, 1.0 ltr*

### Sikadur 52

Two component solvent free, low viscosity, epoxy resin specifically formulated for crack injection work. Also suitable for floor screed stabilisation / bonding. Excellent bond to damp or dry concrete, timber, and masonry substrates. For cracks from 0.2mm - 5mm

*Yield : 1 ltr*

### Sikadur CF & Rapid Grade

Solvent-free, moisture tolerant, thixotropic, structural injection resin. Bonds to almost any surface. Normal and rapid set grades available. Ideal for cracks from 10mm - 15mm

*Coverage: 2kg / m<sup>2</sup> / mm*

### Norsekem BarFast - Injection Resin

Thixotropic resin designed for anchoring of studs / bars and other fixings in to concrete, masonry and blockwork. Can also be used as an injection resin for cracks from 2mm - 20mm. Mix in the nozzle technology. Ready to use.

*Yield: 380ml*

### Fosroc Nitokit TH & LV

Basic pack incorporates a two-part epoxy crack injection resin contained in a patented single cartridge, complete with injection nipples and hoses. A selection of either Nitokit LV, a low viscosity system or Nitokit TH, a thixotropic system, ensures the most cost effective and efficient solution.

*Coverage: Refer to data*

### Parex Epoxy Thixotropic Crack Bonder (ETCB)

Specially developed for filling and bonding of cracked concrete and brick work. An ideal product for brick bonding after underpinning has taken place or securing of remedial wall ties. Consists of a three part epoxy resin system consisting of a thixotropic epoxy resin base, a low viscosity hardener and a synergistic blend of fillers. Filling of gap dimensions 1mm to 40mm may be achieved without the use of grout tight shuttering. The product is non shrink enabling complete fill of the void.

*Yield: 1 ltrs*

### Crack Injection Ancillaries

The following ancillaries will be needed along with most Epoxy Injection Grout / Thixotropic Injection Grout Resin to facilitate a proper and effective repair of cracked concrete .

- 330ml Cartridges empty
- HD Skeleton Gun
- Tube, clip and clamp
- Metal Flange Nipples
- PU Tubing for Metal Nipple