

Courtesy of
PERI

Formwork Products

Tierod Components

Tierod System Anchors

Reinforcement Continuity Strip

Permanent Formwork

Disposable Column Formers

Formwork - Repair and Protection

Formwork Application Sprayers

Sprayer Spares & Parts

Tierod Components



Pack Size
1.5m, 6mtr x 15mm
6mtr x 20mm

Dywidag Tie Rod 15mm & 20mm System

High Tensile Tie Rod specifically designed for use with Formwork for all types of concrete structures. SWL for 15mm is 90Kn and 20mm is 160Kn.

Custom lengths to order.



Pack Size
15mm / Each
20mm / Each

Dywidag Wing Nuts 15mm & 20mm System

A 'Knock On' wing nut, self coloured to suit 15mm and 20mm Tie Rod systems.



Pack Size
15mm Pressed /Ea
15mm Plain /Ea
20mm Plain / Ea

Waler Plates Pressed & Plain.

Pressed 120mm x 120mm x 10mm

Self coloured

Plain 120mm x 120mm x 12mm

Self coloured

20mm Plain 120mm x 120mm x 20mm

Self Coloured



Pack Size
Connection / Each
Hex / Each

Connection Nuts & Hex Nuts

Used for joining tie rods, complete with centre stop for equal spacing, self coloured to suit 15mm Tie Rod. Hex Nut for restricted access or locking nut.



Pack Size
Barrier / Each
Reducer / Each

Water Barrier for 15mm Tie Rod & Reducer

Used in water retaining structures. Cast into the concrete wall between two separate rods. After pouring tie rods are removed and the water barrier remains in-situ. Two plastic reducers are required so that 22/26 Spacer Tube can be fitted.



Pack Size
Each

Waro Water Barrier for spacer tube

The Waro barrier is slipped onto 22mm spacer tube to prevent water seepage tracking along the tube. It is recommended that the sealing ring is moistened before fitting. *Not suitable for high pressure water.*



Pack Size
22/26mm x 2m x 25no.
26/32mm x 2m x 25no.

Rigid PVC Spacer Tube

Used as protection over tie rods so they can be withdrawn, and also serve as distance spacer between formwork faces. Supplied in packs of 2m lengths. Diameters :-

22mm i.d./ 26mm o.d. For 15mm Tie rod

26mm i.d./ 32mm o.d. For 20mm Tie rod



Pack Size
22/10mm x 500pp
22/50mm x 250pp
26/12mm x 500pp
26/50mm x 250pp

Cones - Expendable

Used on the end of plastic spacer tube, and removed when formwork is struck. Available giving concrete cover of 10mm & 50mm.



Pack Size
Each

SKK Cone

A special steel cone for use with 15mm tie bar and M24 bolts in climbing shuttering situations. It is used when a recess has already been made with the MKK Cone above. The SKK cone is tightened and released with a special spanner.

MKK Cone

A special metal & plastic cone that is reusable. For use when tie rods have to be left in the concrete or for when a leading cone is used for climbing shuttering. Fitted with a built in centre pin. The cone is removable with the special spanner.

Pack Size
Each

Weldable Anchors (Fitsch Anchor)

Metal anchors that can be welded to sheet piling, RSJ's etc. to accept 15mm tie rods. Anchors must be continuously welded all the way round. Load test should be conducted before use.

Pack Size
Each

Form-Anchor (Stainless Steel Grade 304)

The Form-Anchor is versatile, non-corrosive and is used mainly for the securing of Single Sided and Climbing Formwork Shutters. It is easily fixed by use of a pre-fitted locator, which also gives suitable cover to the rebar for making good when the Form-Anchor becomes redundant. No need for drilling of plywood as with many other systems. Can also be used for securing of Slab Edge Formwork, Guard Rails, etc. For use with 15mm Thru Tie Rods . Thread length 65mm , Failing Load 100KN, Length 130mm

Pack Size
Each

Cast in Stainless Anchor (Stainless Steel Grade 304)

Used mainly for the securing of Single Sided and Climbing Formwork Shutters. It is easily fixed by use of a pre-fitted locator, which also gives suitable cover to the rebar for making good when the Anchor becomes redundant. No need for drilling of plywood as with many other systems. Can also be used for securing of Slab Edge Formwork, Guard Rails, etc. For use with 15mm Thru Tie Rods, Thread length 65mm , Failing Load 50KN, Length 95mm

Pack Size
Each

Cast in Plastic Anchor, Uni-Sleeve Anchor

Used mainly for the securing of Single Sided Formwork Shutters, as well as edge formwork, scaffolding brackets etc. It is easily fixed by use of a pre-fitted locator, which also gives suitable cover to the rebar for making good when the Anchor becomes redundant. No need for drilling of plywood as with many other systems. For use with 15mm Thru Tie Rods. Thread length 65mm, Safe working Load 27KN, Length 70mm

Pack Size
Each

Rock Anchor for 15mm Tie Rod

For securing single sided formwork to rock or concrete walls. Hole diameter required 35-37mm. Conduct tensile tests before applying final load. Technical details on request. 20mm Version available.

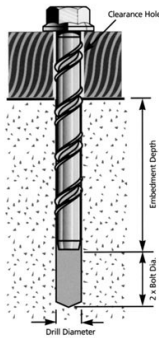
Pack Size
Each

Tie Rod Drop in Anchor 15mm

The Drop in Anchor is specially designed for use with 15mm Tie Rod bars. It is ideal for low load applications, such as fixings for hand rails into existing concrete. Concrete strength needs to achieve 15N/mm before use, which means that the anchors are often installed the next day after concreting. Anchors are set with the dedicated setting punch ordered separately.

Pack Size
Each


Tierod Systems Anchors


Size Available
M12 x 100mm
M12 x 150mm
M16 x 150mm
M16 x 200mm
M20 x 100mm
M20 x 150mm
Excalibur Screwbolts

The Excalibur Screwbolt's unique twin helical thread ensures high tensile-shear-close to edge and centre spacing safe loadings. Wood, concrete block, brick and all grades of structural concrete are Excalibur Screwbolts' major areas of application. It can also cut a thread into steel. Excalibur Screwbolt's versatility enable it to replace virtually all the traditional masonry fasteners currently available. The Screwbolt has been tested to UEAtc M.O.A.T 49 1992 standards. It makes an ideal re-usable push pull anchor.


Pack Size
8kg
DiChem Tiestop

A fast setting, shrinkage compensated, pre-packed, polymer modified, cementitious Tiehole filler. A structural grade cement that can also be used for general repairs. Simply mix with clean water, a measuring scoop is provided to give correct mix ratios. Chloride free and completely waterproof, with very high bond strengths. If colour matching is required, fill the tiehole shallow and finish with Matchpatch.

Complies with clause 6 of DTP Standard (BD 27/86). WRAS & DWI Regulation 31(4)(b)

Yield = 4ltr


Pack Size
20mm x 1000pp
22mm x 1000pp
26mm x 500pp
Application Tool
Flupps

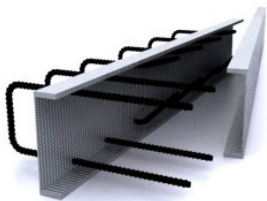
A stopper made from a resilient synthetic rubber material. Used to plug the plastic tie tube and is then covered with **DiChem Tiestop** to form a watertight seal. Used in water retaining and highway structures in particular. Applicator designed to aid fitting of Flupps without puncturing them.

Reinforcement Continuity Strip

COMAX Reinforcement Continuity Strip

COMAX® is one of Europe's premier reinforcement continuity systems. With continuous product development over a 25 year period the customer can be confident in using a system that has been incorporated into some of Europe's most prestigious civil engineering projects. COMAX® has been used to simplify and accelerate construction in a wide range of construction fields from tunnelling to slip forming in some of Europe's tallest Structures.

With the intrinsic benefits of the COMAX® casing, it offers ease of access to an infinite range of special shapes and sizes, not to mention a readily available stock of standard profiles. You can be sure that COMAX® will offer an engineered solution with no compromise to the original design brief, whilst offering significant benefits to traditional construction methods.


Advantages:

The advantages in forming structural joints in concrete utilising COMAX® over more traditional methods are manifold. The COMAX® system allows the repeat use of moulds as the need to have starter bars protruding through the form is negated. Where previously the mould would be damaged on removal, now it is simply oiled and re-used. This in turn leads to a much safer working environment as the dangerous protruding starter bars are safely housed within the robust COMAX® casing.

Due to the nature of the COMAX® system, it is ideally suited for slip form and jump form producers. Where bars would previously have had to be drilled and fixed after the formwork had passed, using the COMAX® system the bars are simply pulled out into position.

This also has safety benefits as there is an overall reduction in the amount of exposure to vibrating machinery.

The simplicity of the COMAX® system and the infinite variety of bar shapes and sizes, means that complex concrete details can be reduced to a small number of basic pours. This in turn allows larger concrete pours to take place and simpler more cost effective formwork to be utilised, resulting in significant time and monetary

Permanent Formwork

Form Rib Permanent Expanded Formwork

Similar to Hy-RibType 2811

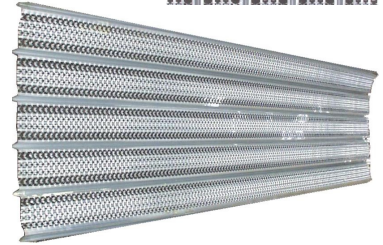
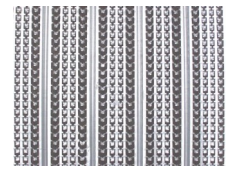
A zinc coated expanded metal mesh with U-ribs to give the sheet strength. It is used on site in lieu of normal formwork to provide stop ends and a construction joint key for the next pour without the need for further surface preparation.

3m sheets available to order

Site Installation booklet available, this gives all design criteria for safe use of this product.

Sheet Size

2m x .445m



BEAM-FORM Permanent Shuttering System Shuttering

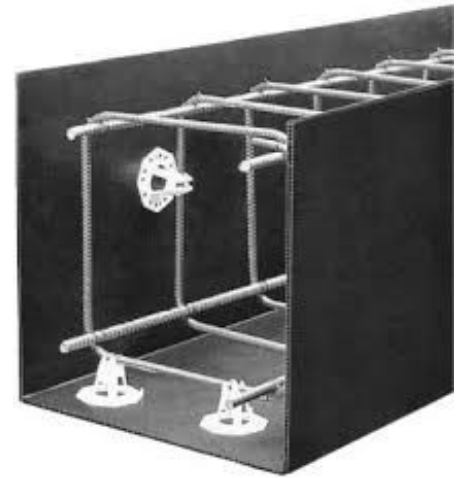
BEAM-FORM provides the contractor with a rapid and cost effective method of constructing concrete ground beams and pile caps. Manufactured from heavy duty polypropylene in 8mm thickness, the system has many advantages over traditional timber or steel pan construction.

Cut to size on site by the contractor

Sheet Size

4.4m x 2.4m

4m x 2m



Advantages:

- Can be bent to form any ground beam detail
- Requires less excavation than traditional shuttering
- Light but rigid so easily handled
- Supplied flat pack so requires minimal storage space
- Reduces over dig and spoil cartage
- Easily installed and cut to exact dimensions
- Minimises concrete wastage
- No stripping, cleaning or release agents are needed
- Easily adapted to suit services and variations on site

To compliment installation of Beam-form we offer the following accessories - Full range on pages 23 & 26

Plastic grade plate spacer with ability to grip 6mm to 16mm diameter bars without the need for tying.

Two sizes are available. 40/50mm cover and 65/75mm cover.

Recommended spacing is 8 per square metre.

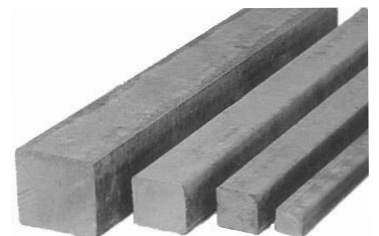


Tric-Trac Continuous heavy duty plastic spacer, these spacers are supplied in 2 metre lengths. Sizes available 40mm, 50mm and 70mm.

Ideal for precision alignment of beams.

Concrete Square bar manufactured to a high standard and comes in 1 metre lengths. Sizes available 40mm or 50mm high.

Recommended for use in the bottom of heavy beam cages and pile caps.



DiChem PVC Tape has excellent adhesive qualities, so protecting against grout loss at joint and intersections.

Roll Size 50mm x 33m rolls. Quantity: 1 roll per 30m² of Beam-form.



Formwork Shuttering - Disposable Column Formers

BAG® Column Formers



Single use formwork system that gives an excellent smooth fair face surface finish. Our Column Formers are manufactured by welding together several layers of high quality polyethylene coated kraft paper, which are spirally wound and bonded together by heating the polyethylene. Once this step is complete, a water resistant foil is also spirally wound over the kraft paper, sealing the column against humidity. This manufacturing process requires no additional adhesives which reduces the wall thickness, making the BAG® Columns light and easy to handle.

Designs:

Lined - BAG® Column Formers have a PVC liner which is fitted the whole length of the inner diameter of the Column Former, this provides an impeccably smooth finish. BAG® Column Formers will only leave a hairline seam on the concrete from the point where the liner joint meets.

Unlined - BAG® Column Formers are also available unlined for applications where surface finish is not critical. This Column Former will leave a spiral effect on the finished column.

Square - BAG® can offer square or rectangular columns on request, made from our standard Column Former with an additional polystyrene insert, manufactured to your specific requirements.

Bespoke - BAG® can also offer made to order bespoke designs. Please contact our sales team for more details.

Advantages:

- Light easy to handle as opposed to steel shuttering.
- Labour saving.
- Easy to strip, no mould oils required.
- Quality fair faced finish.
- Can be used for protective cover for the completed columns.

Water Resistant:

The column formers are water resistant due to the manufacturing process and the outer layer of foil, both of which seal the column former against humidity. Protection will be required when stocking in direct contact with rain and water.

Pouring:

Concrete can be poured into the BAG® Column former via skip or bucket for diameters of up to 450mm and lengths of 4 metres. Larger sizes will require concrete to be placed by a pump and hose. Concrete should be placed slowly to

Site guide to requirements

Tube I/D (mm)	Tube Wall Thickness (mm)	Maximum Pour Height (mtr)	Concrete Required (m ³ /mtr)	Weight (kg/mtr)
150	2.80	6.0	0.018	1.24
200	2.80	6.0	0.031	1.63
240	3.20	6.0	0.045	1.96
250	3.20	6.0	0.049	2.08
300	3.20	6.0	0.071	2.38
350	3.70	6.0	0.096	3.09
400	4.10	6.0	0.126	3.52
450	4.10	6.0	0.159	4.50
500	4.60	6.0	0.196	5.44
550	4.60	6.0	0.237	5.99
600	5.00	6.0	0.283	6.53
650	5.00	4.0	0.332	7.16
700	5.00	4.0	0.385	7.71
750	5.00	4.0	0.442	8.26
800	5.50	4.0	0.502	8.81
850	5.50	4.0	0.567	9.36
900	5.50	4.0	0.636	9.91
950	5.50	4.0	0.708	10.46
1000	5.90	4.0	0.785	11.11
1100	5.90	4.0	0.950	12.11
1200	5.90	4.0	1.130	13.21

eliminate air entrapment between the tube liner. Do not force column formers into position.

DISCLAIMER:

Please note BAG® Column Formers are Water Resistant, not Water Proof.
The concrete pour speed should not exceed more than 4 metres per hour.



Formwork Shuttering - Repair and Protection
Norsekem Shuttafill

A general purpose formwork repair kit containing a pre-mixed polyester resin paste to which the reactive hardener is added. Simple to mix and apply. Rapid setting: starts to set in 5-10 minutes. Can be sanded in 30 minutes and is ready for painting in 45 minutes at normal room temperature. Excellent adhesive qualities. Flexible – expands and contracts, totally compatible with a sound substrate. Highly resistant to impact and abrasion. Resistant to water, seawater, oil, petrol, atmospheric chemicals and frost. Can be sanded by hand or machine to a 'feather edge' for an invisible repair when painted. Can be carved, shaped, drilled and tapped. Takes nails, screws, most paints and varnishes.

Colour :- Phenolic Board Brown & Grey.

Pack Size
Brown - 1.5kg
Brown - 7kg
Grey - 7kg


Norsekem Shuttawax

Specifically developed for the initial sealing of various formwork surfaces. Based on crystalline waxes and with a fugitive dye, which will not stain permanently. Its economy of use, speed of application and compatibility with most types of release agent make it the ideal preservation sealer. It is not in itself a release agent. Can be applied to new or old, damp or dry, formwork surfaces. Prevents veneer damage, furring, cracking or separation. Reduces the possibility of porosity variation, woodsugar migration and subsequent hydration staining. Standardises absorbency differences between dissimilar plywoods, hardwoods, wood chippings, etc., which could cause noticeable colour variation in concrete surface finishes. Easily applied using rag, minute mop, brush, or squeegee, forms are ready to use in one hour after treatment.

Coverage: 10m²/kg depending on porosity

Pack Size
20kg


Norsekem Formseal PU 1K

Clear, penetrative, solvent based one part polyurethane sealer specifically developed for the concrete industry to seal formwork ply and special timber features. It is principally used to extend the life of formwork panels or wood features and to standardise absorbency in the timber. It is also capable of being applied to damp timber unlike many competitor 2 part solvent borne systems. Product is diluted with Formseal PU Thinners to produce a primer coat, normal thinners must not be used.

Coverage: 4 - 5m²/ltr depending on porosity

Pack Size
5 ltr


Norsekem Metalguard RPS

Rust preventative. Versatile thixotropic de-watering coating, ideal for long term outside storage, up to two years, of Steel Forms. Thermally stable and self sealing, resistant to fire, UV degradation, salts, microbes etc. Weldable without removal. One coat application by sprayer, roller, brush or by dipping. Coating can be removed using Solvkleen or hot pressure washing.

Coverage: 20 - 25m²/ltr

Pack Size
25 ltr


Norsekem Edgeséal PU 1K

Dyed blue, penetrative, moisture cure PU 1K seal is specifically developed for the concrete industry to seal cut and exposed edges on all types of formwork ply or to treat and holes for tie rods etc. The blue colour provides easy visual verification that the edges have been treated.

Coverage: 6 - 10m² /ltr

Pack Size
5 ltr



Formwork Shuttering - Accessories



Pack Size
Coil - Standard
Per KG-Stainless

Tying Wire

Standard grade 17 gauge black soft annealed wire for tying of reinforcement.

Stainless Steel 18 gauge wire for tying of reinforcement. Supplied in catch weight coils and charged per kg



Pack Size
11mm x 100m Std
11mm x 100m Lip
20mm x 100m Std
20mm x 100m Std
25mm x 100m Std
25mm x 100m x Lip

Corner Fillets / Chamfer

Manufactured from impact resistant PVC. Used to form chamfered edges to beams, columns and walls. Two types available, one with nailing flange (lip), one without.

Range of sections are available:

25 x 25mm, 20 x 20mm, and 11 x 11mm

30 x 30mm and 15 x 15mm sizes available to order.

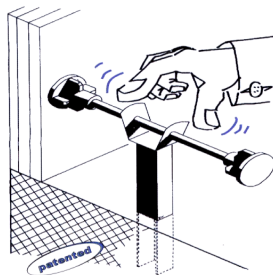
All sections are 2.5 metres long



Size / Pack Size
6-18mm / 250no.
16-32mm / 250no.
40-50mm / 100no.

Re-Bar Identification Caps

A strong high visibility plastic cap which fits securely onto re-bar ends for safety of site personnel. Sized to suit all popular bar sizes. Other types to protect against impalement are available.



Code / Wall Size
KLA / 150mm
KLA / 175mm
KLA / 200mm
KLA / 225mm
KLA / 250mm

Cast in Kickers - Kik-LoK

Dispenses with the need to pour concrete kickers. These anchors are simply pushed into the fresh concrete along the approximate centre line of the wall being produced. Once the concrete has set, the spacer rod can be easily and precisely adjusted by pinching the spring mechanism to allow spacer rod to move from side to side. This product reduces material/labour costs and speeds pour sequence.

50 per box



Size
48mm dia x 30mm

Plastic Kickers

Dispenses with the need to pour concrete kickers. These Kickers are simply fixed by use of a masonry nail (not supplied) to the slab and used to locate the formwork panel against it to give the correct width.

100 per pack



Code / Wall Size	Per Pack
KB / 100mm	100
KB / 150mm	100
KB / 200mm	100
KB / 250mm	50
KB / 300mm	25

Adjustable Kickers

Adjustable Kickers are used to space wall shutters thus eliminating the need for a traditional kicker. They can be located in the centre of the wall with a cap on each end (double sided) or offset with one cap only (single sided) where a waterbar is present, or in a wide wall.

Formwork Shuttering - Accessories

DiChem FORMSIL HMA Multi Purpose Silicone (Clear)

A high modulus silicone sealant that cures quickly to provide a flexible seal. Good adhesion but easier to remove than most makes this an ideal silicone for sealing gaps in formwork construction or for grout check against kickers etc.

Size	Per Pack
310ml	25



Applicator guns are of all metal construction and take both 400ml, 380ml & 310ml cartridges

Size	Per Pack
N/A	Each



DiChem FORMFOAM Hand Held Expanding Foam

Easy to use, Polyurethane based expanding foam for general Construction and Building applications. For filling large, irregular or awkward gaps, fixing window and door frames, insulating between cladding and brickwork, around ductwork. As a joint backing material, can be used with all types of sealant. Filling crash barrier post sockets etc. Ozone friendly. Expands up to 30 times own volume. When cured the foam can be cut, sawn, painted and plastered on.

Size	Per Pack
750ml	12



Gun Grade Expanding Foam

Specification same as Hand Held Foam, however must be used with a Gun Grade Applicator or NBS system dispensing gun. Ideal for accurate and repetitive placing of foam.

Size	Per Pack
700ml	12

Size	Per Pack
N/A	Each



Gun Grade Application Gun

PU Foam Cleaner

Multi-Function cleaner that digests and removes uncured PU foam from the majority of gun grade and hand held applicators, so that they can be re-used

Unit size :- 500ml Canisters.

Size	Per Pack
500ml	Each

All Purpose tape - (Stick 2, Gaffa, Duct tape)

A top quality, waterproof, cloth reinforced tape. Adheres to nearly all common materials. Each roll is individually wrapped for convenience and storage. Colour :- Silver

Size	Per Pack
50mm x 50m	24



Di-Tape PVC Formwork Tapes

A tough, thin, PVC tape, with a matt finish, specially designed to adhere to all types of formwork to prevent grout loss. Resistant to oil and damp. Comes in two types **Standard** and **High Tack**. The later has a more aggressive adhesive. Suitable for use on plastic surfaces i.e., GRP, Polypropylene or Cordek moulds, also for jointing PVC sheeting.

Size	Per Pack
50mm x 33m	24 STD
50mm x 33m	18 HT



Di-Chem Foam Tapes

Used to seal butt joints, kicker bases etc. against grout loss. Can also be used for draught excluding.

Available in a variety of sizes and types:- HxWxL

Type 1- Black, Polyethylene, 6mm x 12mm x 10m

We are able to supply other sizes to order please enquire.

Size	Per Pack
6mm x 12mm 10m	24



Formwork Application Sprayers

GLORIA
Gloria 410T Special (10 ltr working capacity)

The "Rolls Royce" of heavy duty sprayers, very robust! Features include:-
 All metal galvanised epoxy coated tank.
 Viton chemical resistant seals.
 All brass fittings with two in line filters.
 Pressure release valve & Pressure gauge.
 Sealed Pump Unit.
 Carry strap.

MESTO FERROX PLUS 3585P

10ltr working capacity metal, heavy duty construction sprayer fitted with Viton seals that allows use with products that have hydrocarbons in them, such as Mould oils, Chemical Release agents, and curing agents. Built to last and withstand heavy use.


MESTO PROFI PLUS 3270P
MESTO

10ltr working capacity plastic heavy duty construction sprayer fitted with Viton seals that allows use with products that have hydrocarbons in them, such as Mould oils, Chemical Release agents, and curing agents.

MESTO FIX PLUS 3237FP

5ltr working capacity plastic construction sprayer fitted with Viton seals that allows use with products that have hydrocarbons in them, such as Mould oils, Chemical Release Agents, Curing Agents, as well as retarders. Excellent value for money sprayer.


Ik12BS Knapsack Sprayer


12ltr Heavy duty Knapsack Sprayer suitable for spraying aggressive chemicals that would normally attack metal components.
 Features include :-
 Visible filling level
 Viton chemical resistant seals.
 Filters in nozzle and in the tank filling neck.

Alta Model SA2-V Sprayer - Acid Resistant

1.8 litre working capacity, made from polypropylene, polyethylene and plated steel, with Viton seals. Will not break if dropped.
 Plated metal rod pump, for extra strength
 Long-reach lance, giving access to difficult areas. Fully adjustable nozzle, allowing you to produce a fine spray, a coarse spray or a jet spray.


Sprayer Spares & Parts
GLORIA®

Parts Code	Description
712040V	Trigger Assembly for Gloria Sprayers
00-900BR1	Com. Nozzle Ass
701310V	Brass Lance
951860	Gloria Seal Service kit
00-605/VR	Replacement Hose
509780	Piston O-Ring
706490V	Piston end Components
N800*	Spare Nozzle

MESTO®

Parts Code	Description
1348LN	Trigger Assembly for FERROX Sprayers
1421F	Com. Nozzle Ass FERROX/PROFI PLUS
3650	Lance for FERROX & PROFI PLUS
6001L	Mesto Service kit (FERROX/INOX)
6322PP	Coily Hose for FerroX Plus
1399L	Trigger Assembly for PROFI PLUS
6325NR	Coily Hose for Profi Plus
6308M	Trigger for FixPlus
6300VF	Replacement Hose 2m
3654PF	Spraylance 40 cm PP flatspray