

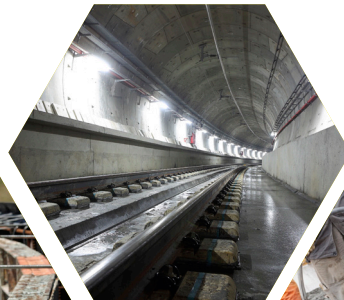


DiChem

"Excellence in Construction Products"

THE CONCRETORS SITE BOOK

**CIVIL
ENGINEERING**



**REPAIRS
AND
REFURB**



**RC
FRAME**



GROUNDWORKS



CONSTRUCTION

DISTRIBUTORS OF FORMWORK AND CONSTRUCTION CHEMICALS

**dichem.co.uk
0118 989 2666
sales@dichem.co.uk**

About us

Direct Chemicals are THE UK's leading independent distributor of Formwork Chemicals, Construction Chemicals, Concrete Repair Products, Waterproofing Systems, Concrete Accessories, Formwork Ancillaries, Joint Sealants, Filler Boards, Grouts & Anchors. We stock and distribute over 3000 product lines to Specialist Contractors, RC Frame Contractors, Builders Merchants, Civil Engineering Firms, Groundwork Contractors and General Builders.

Our reputation has been built by understanding the problems contractors find on site and providing solutions that meet our customer's expectations of performance, cost and on-time delivery. We are committed to building long term relationships with both our customers and suppliers with a focus on high levels of service together with quality products from leading manufactures.

Technical support

Direct Chemicals are able to offer technical support at all levels. We recognise the need for speedy, cost effective solutions that support every budget. We are also able to offer independent technical written specifications and method statements from a technically trained support team backed by a manufacture.

Our staff take pride in providing a quality service for our customers and to compliment this we have gained ISO9001: 2008 accreditation.

Delivery

We operate a nationwide delivery service from our central distribution centre in Wokingham, Berkshire, situated close to the M4 and M3 motorway network. Deliveries are mainly made using our own fleet of vans and lorries, all vehicles are fully satellite tracked and FORS compliant. To compliment our own fleet we have carefully selected Hauliers and Couriers who meet our strict performance criteria.

Collection

Based close to the main motorway networks, we are ideally located for quick collections. Our trade counter is open 8.00 - 17.30 Monday to Friday.

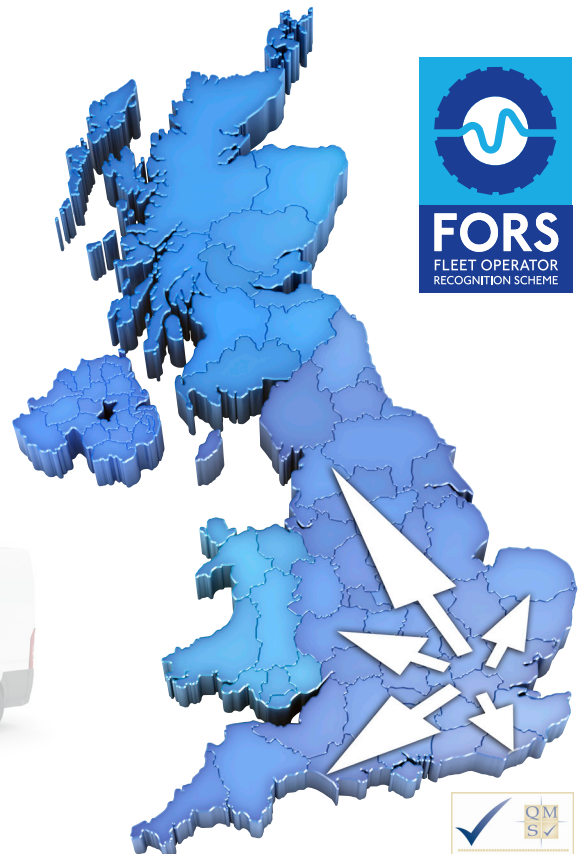
Find Us

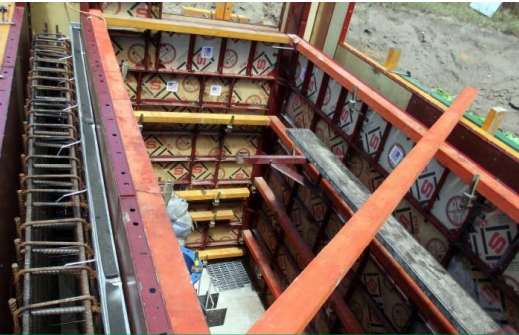
Direct Chemicals Ltd
Unit 6, Stokes Farm,
Binfield Road,
Wokingham,
Berkshire
RG40 5PR

T: 0118 989 2666
F: 0118 989 0929
E: sales@dichem.co.uk
W: dichem.co.uk

45 minutes from London,
5 minutes from Jct 10, M4
15 mins from Jct 3, M3

NEXT DAY DELIVERY FROM STOCK ACROSS THE UK





Formwork & Slab Chemicals

1 - 12

Formwork Products

13 - 22

Reinforcement / Slab Accessories

23 - 32

Concrete Repair & Protection

33 - 44

Waterproofing Systems

45 - 60

Grouting & Accessories

61 - 66

Flooring Compounds

67 - 74

Joint Sealing

75 - 80

Resin Anchors

81 - 82

Machine & Plant Protection

83 - 84

Cleaning Materials

85 - 86

Highways Maintenance

87 - 90

A	Page	C	Page		
AC95 Acoustic Sealant & Adhesive	78	Cast In Kickers	20	Dowel Bars	28
Adcor 500s	54	Cast In Plastic - Uni-Sleeve Anchor	15	DPM	32
Adjustable Kickers	20	Cast In Stainless Anchor	15	Drum Stands	12
Aerofil 1	31, 80	Cebex 100	63	Drum Taps	12
Aerofil 2	31,80	Cementflex	58	Dry Pack C	30,63
AGS Graffi Coat 1	42	Cementitious Coating 851	58	Dual Seal Bentonite / HDPE Membrane	49
AGS Graffi Coat 101	42	Cementseal	58	Dywidag Tie Rod	14
AGS Graffi Coat 102	42	Cemflow Exterior Topping	69	Dywidag Wing Nuts	14
AGS Graffi Coat 103	42	Cemprotc MCI 2020	39		
Alfanol HD	73, 86	Cemprotec 2000-S	59	E	
Aluminium T-Bar	28	Cemprotec E942	58	E140 Epoxy Grout	64
All Purpose Tape	21	Cemprotec E-Floor	69, 72	E33 Epoxy Grout	64
Aqua Channel	51	Cemprotec Elastic	58	E70 Epoxy Grout	64
Aqua Pump Pro	51	Cemrock Construction Grout ExCel	62	Easiflow GA	30,62
Aqua Pump Pro Battery	51	Centrebult Internal PVC Waterstop	55	Ecodin RS	5
Arbo XL 1075	78	Chamfer	20	Ecodin WB	5
Arbokol 1025 Secure	78	Chemcure R90 / R90AL	6	Edgeseal PU 1K	19
Arbokol 1025SP	78	Chemcure R90 WB	7	Empty Cartridges	44
Arbomeric MP10	76	Chemcure S	7	EPDM Systems	79
Arbomeric MP20	76	Chemlease	3	Epoxy 200	64
Arbosil 1070	78	Chemstrike MRO Mould Release Oil	2	Epoxy Adhesive 305	43
Arbothane 1245	76	Coldseal 200D Concrete Pavement	78, 89	Epoxy Bonding Aid	43
Ardex DPM 1C Rapid	47	Colpour 200PF	77, 89	Epoxy Grouts	64
Ardex A35	70	Column Formers	18	Epoxy Injection Resin	44
Ardex DPM 1C	47	Compriband	79	Epoxy Mortar	43, 90
Ardex K11	68	Conbextra BB	63, 90	Epoxy Mortar E	43
Ardex K301	69	Conbextra EP10	64	Epoxy Thixotropic Crack Bonder	44
Ardex K80	69	Conbextra EPR	64	Everbuild SBR	70
Ardex WPM 200	47	Conbextra GP	30,63	Excalibur Screwbolt	16
Arditex	68	Conbextra HF	30,63	Expamet Hy-Rib Permanent Formwork	17
Arditex NA	68	Conbextra TS	63	Expandfoam	31
Ardurapid A45	71	Cones - Expenable	14	Extracon DS	4
		Connection Nuts	14	Extracon XS	4
B		Con-Rem	73, 86	Extraseal External PVC Waterstop	55
B1 Primer	50	Construction Grout	62		
BAG Column Formers	18	Continuity Strip	16	F	
BarFast	44,82	Continuous Plastic Spacer	24	Fastfill	34, 36, 71, 80
Barrel Pumps - Metal	12	Continuous Wire Deck Chair	25	Fastfill WP	57
Barrel Pumps - Plastic	12	Corner Fillets	20	Fastplug	37
Beamform Shuttering	17	Corner Strip	51	Febox NF	43
Bituthen LM	47	Couplers	32	Febset 45	71, 88
Bituthene 8000	50	Crack Inducer	28	Fibreboard	31
Bituthene 800PA	48	CS Grout	30, 90	Fill 'N' Rub	38
Bituflex Fillet	49			Fire Mate Sealant	78
Bitumen Bonded Corkboard	31, 80	D		Five Star Grout	30,62
Bitumen Fibreboard	31, 80	Darakote 90WX	8	Flat Dumbell PVC Waterstop	55
Bitusheet Double Sided Tape	49	DCP Strongcoat HB	72	Flat Top Concrete Screed Rail	26
Bitusheet Gas Barrier Membrane	49	DCP Strongcoat WD	72	Flexcell	31
Bitusheet HD Protection Board	49	De Neef Bentoject	56	Floor Squeegee	73
Bitusheet Mastic	49	De Neef Bentorub +	53	Flupps	16
Bitusheet Primer	49	De Neef HA Cut	56	Foam Application Gun	21
Bitusheet Reinforcing Tape	49	De Neef Infilta Stop	56	Foam Tape	21
Bitusheet XL Membrane	49	De Neef Plug Pipe	57	Follower Plate	79
Bituthene 300	50	De Neef Swellseal 3V	53	Force Action	66
Bituthene Protection Board	50	De Neef Swellseal Mastic	53	Form Anchor	15
Black Bitumen Paint	47	Deck Chairs	25	Form Rib	17
Black Jack DPM 908	47	Decobio 310	5	Formease CRA1 Chemical Release Agent	2
Blow Out Pump	82	Decobio 410	5	Formease CRA2 Chemical Release Agent	2
Bolt Boxes - Polystyrene	29,65	Degreasant	86	Formfoam Expanding Foam	21
Bolt Boxes - Waxed Cardboard	29,65	Denso Tape	29	FormKleen	84
Bondcoat UF	40	Double Cover Concrete Spacers	24	Formseal PU 1K	19
Bonding Bridge 842	40	Double Drain	51	Formsil HMA Silicone	21
Bond-prime	41	Dowel Bar Expansion Caps	28	Formtard	8
Brick Fixing Plugs	51	Dowel Bar Paint	28	Frost Blankets	32
Brick-Aid	86	Dowel Bar Sleeves	28		

F	Page	J	Page	N	Page
Fastfill	34, 36, 71	Jointing Jig	55	Neoprene Strip	31
Fastfill WP	57	Jointing Knife 110v / 240v	55	Nitobond AR	40
Fastplug	37			Nitobond HAR	40
Febox NF	43	K		Nitofloor Lithurin	9
Febset 45	71, 88	K-Form - UPC Screed Rail	27	Nitokit LV	44
Fibreboard	31	Koster KD-System	57	Nitokit TH	44
Fill 'N' Rub	38			Nitomortar HB	43
Fire Mate Sealant	78	L		Nitomortar S	43
Five Star Grout	30,62	LA Repair Concrete	39	Nitoprime ZincRich	40
Flat Dumbell PVC Waterstop	55	Latex Levelling Compounds	68	Nitoseal MS300	76
Flat Top Concrete Screed Rail	26	Lightweigh Mortar 14	35	Nitoseal MS600	76
Flexcell	31	Lightweigh Mortar 18	35		
Floor Squeegee	73	Lokfix P25 / S25	82	O	
Flupps	16			Overtape	51
Foam Application Gun	21	M			
Foam Tape	21	Mapei Latexplan	68	P	
Follower Plate	79	Mapei Mapecem	70	P20 Cavity Drain	51
Force Action	66	Mapei Mapesil AC	77	P5 Cavity Drain	51
Form Anchor	15	Mapei Ultraplan	68	P8 Cavity Drain	51
Form Rib	17	Mapei Ultratop	70	Parex 100 Newton Grout	62
Formease CRA1 Chemical Release Agent	2	Mars Bars	24	Parex SBR	70
Formease CRA2 Chemical Release Agent	2	Masterfinish RL511	5	Petrolatum Tape	29,65
Formfoam Expanding Foam	21	MasterInject 625	54	Pieri Cure LM 33 Wax	2
FormKleen	84	Masterkure 181	6	Pieri Decobio 310 (Formally S-31)	5
Formseal PU 1K	19	Masterkure 181	6	Pieri Decobio 410 (Formally VS43)	
Formsil HMA Silicone	21	MasterSeal 590	54	Pieri DRC6 - Grade 200 & 300	8
Formtard	8	MasterSeal 910	54	Pieri DRC6 Architectural Retarder	8
Frost Blankets	32	MasterSeal 912	54	Pieri Top - Grade 200 & 300	8
		Matchpatch - White & Grey	34, 37, 89	Pieri Top Surface Retarder	5
		Mesh Block Spacers	24	Pipe Plug	57
G		Meshfix Spacer	24	PlantGuard CPS	84
Glass Hammer Capsules	82	Mesto Ferrox Plus 3585P	11, 22	Plaster Base Membrane	51
Gloria 172RT Sprayer	12, 22	Mesto Fix Plus 3237FP	11, 22	Plaster Mesh Membrane	51
Grade Plate Spacer	24	Mesto Profi Plus 3270P	11, 22	Plaster Plugs	51
Graffi Clean 300 Graffiti Remover	42	Metal Injection Flanges	44	Plastic / UPVC Screed Rail	27
Graffi Green Multi-purpose	42	Metal Screed Chair - Heavy Duty	26	Plastic Clip on A Spacer	25
Grout CheckFoam Tape	21	Metal Screed Chairs - Std	26	Plastic Injection Tubing	44
Gun Grade Expanding Foam	21	Metal Top Concrete Screed Rail	26	Plastic Kickers	20
Gun Grade Foam Application Gun	21	MetalGuard RPS	19	Plastic Screed Chair	26
Gun Grade PU Foam Cleaner	21	Miothene	31, 80	Plastic Shims	29,65
		Miothene 70	31, 80	Plastic Wheel Spacer	24
		Mixing Paddles	66	Plyease	4
		Mixing Tubs	66	Polyester Anchor Resin	82
H		MKK cone	14	Polyester Grout	64
Hand Held Expanding Foam	21	MM19 Megamixer 1000 watt	66	Polyflex - HM (50FC)	76
Hessian Rolls	10	MM22 Megamixer 1150 watt	66	Polymer Admixture 80	70
Hex Nuts	14	MMA Decking Systems	72	Polystyrene Disolver	29,65
Highflow Construction Grout	62	Monodex Clear	41	Polythene	32
Highway C1	88	Monodex Smooth	41	Cemrock Easi-flow Excel	62
Highway C2	88	Monodex Textured	41	Preprufe 160R / 160R Plus	48
Highway C45	88	Monodex Ultra	41	Preprufe 300R / 300R Plus	48
Holding Down Bolts	29,65	Monolevel 250F	38	Preprufe Tape	48
Hole Cleaning Brush	82	Monolevel 844SP	38,58	Proofex LM	47
Hydrocell	30	Monolevel FC	37	Protection Boards	32
Hydroduct CF Ancillary Items	52	Monolevel RM	38	PU Foam Gun Cleaner	21
Hydroduct CF08	52	Monolite	34	PVC Formwork Tape	21
Hydroduct CF20	52	Monomix	34	PVC Waterstop Junctions	55
Hydroduct Channel	52	Monomix HD	36, 88	PVC Waterstops	55
Hydrotite Adhesive	53	Monopour PG & PC6	63	Pyro Mate Silicone	78
Hydrotite CJ	53	Monoshake Metallic	10		
Hy-Rib	17	Monoshake Pigmented	10		
		MR2 Epimixer Paddle	66		
I		MR3 Mixing Paddle	66		
IK12BS Knapsack Sprayer	12, 22	MR4 Mixing Paddle	66		
Injection Packers	56				
Insulated Frost Blanket	10				



Formwork & Slab Chemicals

Mould Oils

Release Wax

Chemical Release Agents

Release Products - Water Based & Sustainable

Curing Membranes - Resin Based Solvent Borne

Curing Membranes - Resin Based Water Borne

Curing Membranes - Water Borne Metallic Silicates

Curing Membranes - Water Borne Wax Based

Concrete Retarders - Exposed Aggregate

Concrete Sealing, Dustproofing & Hardening

Dry Shake Surface Hardening

Loose Lay Protection

Application Sprayers

Fluid Handling

Mould Oil


Pack Size

25 ltr
200 ltr
1000 ltr

DiChem Chemstrike MRO - Mould Oil

BCA (C & CA) Category 2

A highly versatile specially blended mould oil, with a degree of active ingredient making it suitable for most formwork types. Gives optimum release and finish on a wide range of mix designs. Spray or brush applied. Non flammable.

Coverage: 20 - 45m²/ltr
NORSEKEM
 APPLIED CONCRETE TECHNOLOGY

Pack Size

25 ltr
200 ltr
1000 ltr

Norsekem Thorcast - Mould Oil

BCA (C & CA) Category 2

A formulated mould oil with additives and a degree of surfactant which can be used on a wide range of metal, timber and other formwork materials and coatings. Formulated to give optimum release and quality of finish to concrete over a wide range of mix designs. Spray or brush applied. Non flammable.

Coverage: 20 - 45m²/ltr
NORSEKEM
 APPLIED CONCRETE TECHNOLOGY

Pack Size

25 ltr
200 ltr
1000 ltr

Norsekem Thorcast 533 - Mould oil

BCA (C & CA) Category 2

A highly versatile specially blended mould oil, suitable on most formwork types. Gives optimum release and finish on a wide range of mix designs. Spray or brush applied. Non flammable.

Coverage: 20 - 45m²/ltr
Norsekem Thorcast CRB - Dry Cast Mould oil

BCA (C & CA) Category 2

A specially blended low viscosity mould oil, formulated to give quick, positive release for semi dry concrete casting systems. It is odourless, and low staining. Allows rapid production in automated production facilities, and provides excellent results on unvented steel moulds.

Coverage: 20 - 45m²/ltr
Pack Size

25 ltr
205 ltr
1000 ltr

Pack Size

20 ltr
210 ltr

Nufins Formstrike MRO - Mould Oil

BCA (C & CA) Category 2

A versatile neat oil with surfactant which is designed to give optimum release and surface finish for a wide range of formwork materials. Spray or brush applied. Flammable. WRAS Approved.

Coverage: 15 - 30m²/ltr

Release Wax


NORSEKEM
 APPLIED CONCRETE TECHNOLOGY

Pack Size

17kg

Pieri Cire LM-33 Solid Release Wax

Paste release wax for high quality architectural concrete surfaces. Suitable on all formwork materials. Provides exceptional release on "difficult" pieces :- Fluting, caissons etc. Also highly recommended for counter casting, release can be achieved even after a years contact together .

Coverage: up to 120 m²/kg
Pack Size

25 ltr
205 ltr

Norsekem Teknikast / Teknikast Ultra

A chemically neutral sprayable liquid release wax. Particularly recommended for architectural concrete production in pre-cast factories, as well as difficult release situations on site. Suitable for use on GRP, Plastic, and Phenolic boards. Is also ideal for use on steel shutters, column boxes and sealed timber forms. Spray applied.

Coverage: 30m²/ltr

Chemical Release Agents

DiChem Formease CRA1 - Chemical Release Agent

BCA(C & CA) Category 5.

A slower drying type chemical release agent formulated to give easy release of formwork and quality surface finishes to concrete. Suitable for use on all types of formwork and is the preferred type of product on proprietary MDO & HDO plywood forms and steel shutters, it can also be used on sealed timber forms. Safe for use on form liner systems. Spray applied. Not classified as Hazardous under CHIP 3 Regulations or ADR.

Non flammable.

Coverage: 25 - 60m²/ltr

Pack Size
25 ltr
205 ltr
1000 ltr



DiChem Formease CRA2 - Chemical Release Agent

BCA(C & CA) Category 5.

Reactive, fast drying type Concrete Chemical Release agent. Formease CRA2 is the preferred choice amongst Formwork Contractors. Fast drying capability allow soffit shutters to be walked on safely quickly. Recommended for use on MDO, HDO, phenolic and polyurethane coated plyforms, steel forms etc. Spray applied. Flammable.

Coverage: 15 - 60m²/ltr

Pack Size
25 ltr
200 ltr
1000 ltr



Nufins Chemlease

BCA(C & CA) Category 5.

Chemlease is an internationally accepted formulation giving an optimum of release and concrete finish for all types of formwork. This is achieved by the chemical formation of complex soaps at the concrete interface which is a very different concept to conventional mould oils. Chemlease is unaffected by rain and may be applied either immediately before casting or treated forms may be left weeks before concreting. WRAS Approved.

Coverage: 25 - 60m²/ltr

Pack Size
20 ltr
210 ltr



Norsekem Teknicon - Chemical Release Agent

BCA(C & CA) Category 5.

Reactive type high quality Chemical Release Agent that carries a "No Significant Hazard to Health Label" and is not regulated for road transport. Suitable for general use on most formwork materials. Particularly recommended by Timber Suppliers and Associations as the preferred type of product on proprietary MDO & HDO plywood forms. Is also ideal for use on steel shutters and column boxes and sealed timber forms. Spray applied. Non flammable.

Coverage: 25 - 60m²/ltr

Pack Size
25 ltr
205 ltr
1000 ltr



Norsekem Teknistrip - Chemical Release Agent

BCA(C & CA) Category 5.

Reactive type high quality Chemical Release Agent with no solvent content. It is specially designed for release of plastic and thermoplastic mould liners in pre-cast situations providing high quality finish to concrete. This is a high viscosity product suitable for general use on most formwork materials. Spray applied. Non flammable.

Coverage: 25 - 60m²/ltr

Pack Size
25 ltr
205 ltr
1000 ltr

NORSEKEM
APPLIED CONCRETE TECHNOLOGY

Chemical Release Agents


Pack Size

25 ltr
200 ltr

Norsekem Tekease - Chemical Release Agent

BCA(C & CA) Category 5

A tried and trusted cost effective formulation of hydrocarbon carrier and chemically active ingredient producing a low viscosity concrete mould release agent suitable for use on shuttering ply, MDO timber and steel. Achieves a clean “strike” on release. Spray or brush applied. Non flammable.

Coverage: 25 - 60m²/ltr
Norsekem Plyease - Chemical Release Agent

BCA(C & CA) Category 5

A tried and trusted cost effective formulation of hydrocarbon carrier and chemically active ingredient producing a low viscosity concrete mould release agent suitable for use on shuttering ply, MDO timber and steel. Achieves a clean “strike” on release. Spray or brush applied. Flammable.

Coverage: 25 - 60m²/ltr

Pack Size

25 ltr
205 ltr

Adomast Extracon XS - Chemical Release Agent

BCA (C & CA) Category 5.

Reactive, drying type CRA. Recommended for use on MDO, HDO, phenolic and polyurethane coated plyforms, steel forms etc. Spray applied. Flammable.

Coverage: 30 - 40m²/ltr

Pack Size

25 ltr
205 ltr

Adomast Extracon DS - Chemical Release Agent

BCA(C & CA) Category 5.

Chemical release agent designed for general site and precast use. A high concentration release oil that is easily applied and suitable for all types of formwork, even on sealed or unsealed timber in all climatic conditions.

Highly resistant to removal by rain showers or foot traffic.

It is particularly suited for white or fair faced concrete finishes. It is a safe, non-staining release oil that facilitates easy formwork release and is suitable for indoor and outdoor use. Non flammable.

Coverage: 30 - 40m²/ltr

NORSEKEM

APPLIED CONCRETE TECHNOLOGY

Manufacturers of Speciality Products for the Formwork, Construction and Pre-Cast Industries

Release Products, Curing Products, Construction Retarders

Formwork Treatments, Sealing Compounds, Plant Protection, Concrete Repair

Sole UK representative for: **LeycoChem LEYDE**

FOR MORE INFORMATION ON OUR PRODUCTS AND SERVICES OR CONTACT OUR OFFICES ON 0845 4027663



www.norsekem.co.uk

Release Products - Water Based & Sustainable

NORSEKEM Ecodin WB - Emulsion Release agent

A water based Chemical Release Agent based on modern rapeseed ester emulsion technology. Supplied ready for use and best applied by spraying techniques. It is completely free from hydrocarbon solvents and is therefore VOC free. This makes it ideal for use in pre-cast factories or confined areas where the solvent vapours of traditional release agents would be a hazard to the work force. *ECODIN WB* has been designed to give easy release of formwork and produce high quality surface finishes with all types of concrete in both Pre-cast and In-Situ concrete. Spray applied with N8002 Nozzle for optimal coverage.

Coverage: 25 - 60 m²/ltr



NORSEKEM
APPLIED CONCRETE TECHNOLOGY



Pack Size

25 ltr

205 ltr

Norsekem Ecodin RS / RS+

ECODIN RS / RS+ is a readily biodegradable chemical release agent specially formulated to give easy release from pre-cast moulds or formwork and provides a high quality surface finish to concrete. The product utilizes sustainable Vegetable Oils within its formulation. Spray applied.

Coverage : 25 - 60m²/ltr



Pack Size

25 ltr

205 ltr



BASF Masterfinish RL211

Offers a safe, cost-effective alternative to traditional oil based release agents. The unique product, when applied to most forms and form liners, is formulated to enhance the appearance of precast, prestressed and cast-in place concrete. Masterfinish RL 211 form release agent significantly reduces production cost through its efficiency, ease of use and its superb release capability. Spray applied using a N8003 nozzle.

Coverage: 30 - 100m²/ltr



Pack Size

25 ltr

200 ltr

BASF
The Chemical Company



Pieri Decobio 310 (formally Decobio S-31)

A vegetable oil based release agent specifically designed to solve release and health risk problems on site and in the pre-cast factories, Can be used on all types of mould or formwork materials, and is recommended for general and high quality finishes. Spray applied using a cone nozzle or a very fin fan nozzle.

Coverage: 40 - 50m²/ltr



Pack Size

25 ltr

220 ltr



PIERI

Pieri Decobio 410 (formally Decobio VS 43)

A solvent free vegetable and synthetic oil based release agent specifically designed to solve release and health risk problems on site and in pre-cast factories. Can be used on all types of mould or formwork material, and is recommended for general and high quality finishes. Spray applied using a cone nozzle or a very fine fan nozzle.

Coverage: 40 - 50 m²/ltr



Pack Size

25 ltr

220 ltr



Full range of application sprayers and fluid handling products on pages 11 & 12



Curing Membranes - Resin Based Solvent Borne


Pack Size
25 ltr
205 ltr
1000 ltr
DiChem Tuffacure R90/R90AL

A resin based curing membrane to protect freshly placed or struck concrete from excessive water loss. Tested to **DTp** Specification for Highways 1992 Clause 1027 (BS 7542, 1992) as 90% efficient. Film will degrade by oxidation and flake off over a period of 28 days, leaving a stain free surface. Also available dyed blue to assist in application. An aluminised version is available for PQ Concrete or where protection from sun is required. Spray Applied using a N8004 Nozzle.

Coverage: 5 m²/ltr


Pack Size
25 ltr
205 ltr
BASF Masterkure 181

Non-degrading, membrane forming liquid based on acrylic resin suitable for spray application to freshly poured concrete. When applied to floors, the MASTERKURE 181 seals and dustproofs the surface enhancing durability. MASTERKURE 181 conforms to the requirements of: ASTM C309: Type 1 Class B, AASHTO M-148 Type 1. Spray applied.

Coverage: 4.5 - 5.5m²/ltr


Pack Size
20 ltr
210 ltr
Nufins Chemcure R90 / R90AL

Formulated with inert hydrocarbon resins which give films with excellent water retention efficiency in excess of 90% respectively, complying with ASTM C309.66 and HA Spec. clause 1027. Available in clear, white and with aluminium flake pigment, to give maximum solar reflection. Spray Applied.

Coverage: 4.5 - 6m²/ltr


Pack Size
25 ltr
200 ltr
Sikafloor - ProSeal / 90

Solvent based, clear acrylic resin polymer solution used to cure, harden and seal fresh or hardened concrete. Excellent moisture retention; meets requirements of ASTM C-309 (90) Suitable for exterior and interior application.

Coverage: 5 - 10m²/ltr


Pack Size
5 ltr
25 ltr
DiChem Solvkleen

A selected blend of organic solvents and reactive ingredients. Suitable for cleaning sprayers after using Tuffacure R90/ R90AL or Tuffaseal AR403 products and other chemical release agents.

Curing Membranes - Resin Based Water Borne


Pack Size
25 ltr
205 ltr
Norsekem Tuffacure P

A specially formulated, water based curing compound utilising advanced acrylic copolymers which become an integral part of the concrete surface. It is non-degrading, enabling it to also be used as a surface treatment for new and existing concrete to seal, harden and protect from staining, frost damage, efflorescence etc. Retains over 85% of the water in the concrete during the first 72 hours.

Coverage : 4 - 7m² / ltr

Curing Membranes - Resin Based Water Borne cont'd

Sika Sikafloor-Proseal W

A one part water dispersed acrylic emulsion to cure, harden and seal fresh or hardened concrete. Excellent moisture retention; meets requirements of ASTM C-309 Type 1, Suitable for Indoor use where solvent systems can not be used.

Coverage : 5 - 10m²/ltr

Pack Size
25 ltr
200 ltr



Nufins Chemcure R90 WB

A unique, environmentally friendly, water based concrete curing membrane of aqueous resin emulsion containing fine particles of hydrocarbon resin. Held in suspension by carefully selected emulsifiers, when applied to freshly placed concrete act as a curing agent with an efficiency in excess of 90%. In addition a solar reflective grade is available for exposed and warm installations. Spray Applied.

Coverage : 4.5 - 6m²/ltr

Pack Size
20 ltr
210 ltr



Curing Membranes - Water Based Metallic Silicates

DiChem Surecure S

An aqueous solution of metallic silicates that form crystalline, pore filling salts within the concrete surface to reduce moisture loss. It also has dust proofing and surface hardening effects. Does not affect the bond of most subsequent surface coatings.

Not compatible with Silane. Spray applied.

Coverage: 5.5 - 6 m²/ltr

Pack Size
25 ltr
205 ltr



Norsekem Tuffacure S

An aqueous solution of metallic silicates that form crystalline, pore filling salts within the concrete surface to reduce moisture loss. It also has dust proofing and surface hardening effects. Does not affect the bond of most subsequent surface coatings.

Not compatible with Silane. Spray applied.

Coverage: 5.5 - 6 m²/ltr

Pack Size
25 ltr
205 ltr



Nufins Chemcure S

An aqueous solution of metallic silicates which when applied to fresh concrete forms a micro-crystalline seal in the pores, reducing the evaporation of moisture from the mix thus assisting in the efficient curing of the concrete. The aqueous element will evaporate into the atmosphere and the silicates become an integral part of the concrete, leaving no residues or deleterious material on the concrete surface. Spray Applied. WRAS Approved.

Coverage: 5.5—6m²/ltr

Pack Size
20 ltr
210 ltr



Sikafloor CureHard WW

One part, sodium silicate based clear liquid to assist with the curing process of fresh concrete. Improves durability of the surface. Environmentally friendly.

Coverage: 4 - 7m²/ltr

Pack Size
25 ltr
200 ltr



Curing Membranes - Water Based Wax Based



GRACE

Talent | Technology | Trust™

Pack Size

25 ltr

205 ltr

Norsekem Tuffacure WB

A non hazardous water-emulsion based on micro-crystalline waxes providing a curing membrane used to protect newly poured concrete surfaces in the critical early stages of hydration from the effects of too rapid evaporation of surface moisture. Will degrade over time and conditions. Conforms to specification type: ASTM C309 Type 1 Class.

Coverage: 5 - 6m²/ltr

Pack Size

15 ltr

205 ltr

GRACE Darakote 90WX

A 90% efficient water borne white pigmented, wax based, curing membrane. The latest water based technology, makes this product non-toxic and safer than solvent products. Exceeds strict US V.O.C Legislation requirements and ASTM C-309. The membrane must be removed by hot water power washing if subsequent coatings or toppings are required. Spray applied.

Coverage: 4 - 5.5m²/ltr

Concrete Retarders - Exposed Aggregate Finishes


Pack Size

25 ltr

200 ltr

DICHEM Toptard

A water based spray applied top face retarder, suitable for producing exposed aggregate finishes for construction joints on kickers or a key for applying subsequent coatings. Produces a uniform depth of retardation. The treated area must be washed / brushed down within 8-20 hours to reveal the retarded matrix. Dyed blue to assist in application.

Coverage: 3 - 5m²/ltr

Pack Size

25kg

DICHEM Formtard (Gel)

A water based, brush on form face retarding gel suitable for producing exposed aggregate finishes for construction joints at stop ends or for subsequent plastering operations. Suitable for use on wood, steel or fibreglass forms. The form must be struck and the area washed / brushed down within 30 hours to reveal the retarded matrix. Dyed green to assist in application.

Coverage: 3 - 4m²/kg



Grade/Colour	Etch	Agg.
DRC6/01 Blue	Sandblast	1-3 mm
DRC6/02 Brown	Light	1-3 mm
DRC6/10 Green	Light	3-6 mm
DRC6/25 Yellow	Light	3-6 mm
DRC6/50 Red/Pink	Med	6-10 mm
DRC6/80 Grey	Med	10-12mm
DRC6/100 Mustard	Med	10-12mm
DRC6/130 White	Deep	12-15 mm
DRC6/200 Orange	Deep	12-20 mm
DRC6/300 Purple	Deep	15-20 mm

Pack Size

20 ltr

Pieri DRC6 Architectural Retarders

Specially formulated to produce a very high quality **uniform** exposed aggregate finish, not to be confused with construction joint retarders. Ten grades are available depending on the depth of etch required or size and gradation of aggregate in the mix. Designed for use on all form types, in pre-cast or on-site situations. Application is by brush, roller or airless sprayer, due to the special resins, DRC6 will stay where it is applied, even on inclined, vertical and soffit areas. Care must be taken to ensure the product is thoroughly mixed before and during application, also protect treated forms from rain.

Coverage: 10 - 12m²/ltr



Grade	Colour	Agg. Size
TOP/01	Light Blue	1-3 mm
TOP/10	Light Green	1-3 mm
TOP/25	Light Yellow	3-6 mm
TOP/50	Light Pink	3-6 mm
TOP/70	Light Grey	6-10 mm
TOP/130	Light Brown	10-12mm
TOP/200	Light Orange	12-15 mm
TOP/300	Light Purple	15-20mm

Pack Size

20 ltr

Pieri TOP Surface Retarder

A 100% aqueous retarder for the production of exposed aggregate concretes and construction joints. The eight grades allow a defined depth of retardation to be achieved. The choice of grade must be made on the strength of preliminary tests, since the nature of the cement, its dosage and the general conditions of application will have a bearing on the depth of retardation obtained. It is ideal for use where extended stripping time of up to three days is needed. It is non toxic, solvent-free and odourless.

Coverage: 5m²/ltr

Concrete Sealing, Dustproofing & Hardening
DiChem Tuffaseal AR403

All in one Concrete curer, sealer and dustproof. Specially formulated clear acrylic resin polymer, which partially penetrates to provide a permanent, non-degrading protective matrix to the concrete surface. It is U.V. stable, elastic and provides protection against staining and dusting. Can be used on old concrete to seal and dustproof. Spray applied.

Coverage: 6 -14 m²/ltr

Pack Size

25 ltr

205 ltr


Norsekem Tuffaseal HDS

A hardening and dustproofing liquid. Can be applied to old or new concrete. Reacts with the calcium, chemically sealing the pores to provide a dense, sealed surface with increased resistance to abrasion and chemical attack. Does not affect the bond of subsequent coatings. Diluted then applied by watering can and brush in 2-3 applications depending on porosity.

Coverage: 5 - 20 m²/ltr

Pack Size

25 ltr

205 ltr


Norsekem Tuffacure P

A specially formulated, water based curing compound utilising advanced acrylic copolymers which becomes an integral part of the concrete surface. It is non-degrading, enabling it to also be used as a surface treatment for new and existing concrete to seal, harden and protect from staining, frost damage, efflorescence etc. Retains over 85% of the water in the concrete during the first 72 hours.

Coverage: 4 - 7m²/ltr

Pack Size

25 ltr

205 ltr


DCP Stopdust

A water based, acrylic polymer sealer for cementitious wall and floor surfaces. It is easily applied using brush or squeegee; penetrating the surface to give a durable, dust-free hygienic finish with good resistance to contamination and certain chemicals commonly found in an industrial environment. It has good durability to pedestrian and vehicular traffic.

Coverage: 10 m²/per kg per coat

Pack Size

25kg

200 kg


SikaFloor® ProSeal

A clear acrylic resin polymer solution, which impregnates concrete to cure, harden and seal fresh or hardened concrete. Provides 75% curing efficiency. Helps prevent dusting & increases resistance to oils, lubricants and chemicals. Spray or roller applied. Low odour and 90% efficient versions available.

Coverage: 5-12 m²/ltr

Pack Size

25 ltr

200 ltr


SikaFloor® ProSeal Pro

One part low odour clear acrylic resin polymer solution used to cure, harden and seal fresh or hardened concrete. Provides curing and sealing for SikaFloor® dry shake hardeners.

Coverage: 5 - 10m²/ltr

Pack Size

25 ltr

200 ltr


Fosroc Nitoflor Lithurin

As a surface hardener for new and old concrete floor to prevent dusting and to increase durability. Suitable for use on concrete and granolithic surfaces. Typical applications include industrial floors, light engineering works, warehouses.

Coverage: 150m² - 200m² per 15kg

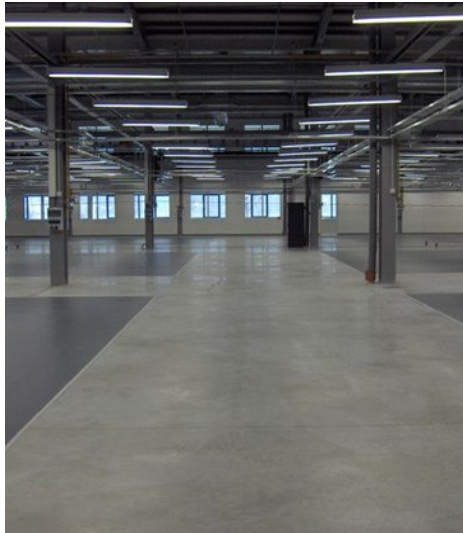
Pack Size

15kg

Dry Shake Surface Hardening


Pack Size
25kg
DCP Tibmix Metallic / Pigmented

Non-oxidizing, chemically inert, metallic dry shake floor topping for monolithic floors. The product contains a blend of specially graded aggregates, additives and Ordinary Portland Cements. Tibmix can also be used to suppress steel fibres in concrete floors. When trowelled into freshly laid concrete, Tibmix produces a dense, tough, abrasion resistant surface suitable for most industrial floors.
Coverage: 5.4kg /m²


Pack Size
25kg
DCP Monoshake Metallic / Pigmented

Quartz based, chemically inert, dry shake floor topping for monolithic floors. The product contains a blend of specially graded aggregates, additives and Ordinary Portland Cements. Coloured versions of Monoshake are also available which contain a high quality, durable pigment.
Coverage: 3 - 5kg /m²

Pack Size
25kg
Sikafloor®-1 MetalTop

Provides a non-staining, ultra hard wearing, metallic dry shake topping for monolithic floors. When sprinkled and trowelled into fresh wet concrete floors, it forms a coloured, extremely wear resistant smooth and dense surface. Typical uses are in warehouses, factories, transport terminals power stations where a high wear resistance is required.
Coverage: 7kg/m² - refer to data


Pack Size
25kg
Sikafloor®-2 SynTop

Provides a hard wearing, non-metallic dry shake topping for monolithic floors. When sprinkled and trowelled into fresh wet concrete floors, it forms a coloured, very wear resistant smooth surface. Typical uses are in warehouses, distribution centres, factories, manufacturing facilities, aircraft hangars, DIY stores, supermarkets, shopping malls, offices and museums.
Coverage: 5kg/m² - refer to data

Loose Lay Protection


Pack Size
1.5m x 75m
Insulated Frost Blanket

Made of Closed Cell expanded Polyethylene Foam, with good thermal insulation properties, very low water absorption. Protects freshly poured concrete from the effects of freezing in winter or heat in summer.


Pack Size
1.35m x 45m
Hessian Rolls

Protects freshly poured concrete and masonry from the effects of freezing in winter or heat in summer.

Application Sprayers

MESTO FERROX PLUS 3585P is a 10ltr working capacity metal, heavy duty construction sprayer fitted with Viton seals that allows use with products that have hydrocarbons in them, such as Mould oils, Chemical Release agents, and curing agents. They feature a fantastic specification with some new ideas to make user life easier, such as the integrated funnel cover to stop dirt ingress and sight glass for easy verification of fill level.

SPECIFICATION

Steel tank, polyester coated 13ltr total - 10ltr working, 6 bar

- integrated spare parts compartment
- spiral hose 2,5 m with safety interlock
- spray and extension wand holder
- pump holder
- sight glass for fill level control
- large filling funnel
- backpack type sprayer
- ergonomic pump handle
- flat spray nozzle with fine filter
- FPM (Viton) gaskets, oil-resistant



MESTO FIX PLUS 3237FP is a 5ltr working capacity plastic construction sprayer fitted with Viton seals that allows use with products that have hydrocarbons in them, such as Mould oils, Chemical Release Agents, Curing Agents, as well as retarders. They feature a good specification at a price that makes them real value for money.

SPECIFICATION

Plastic tank with large pressure reservoir, 3 bar

- Total content 7.0 l
- Filling content 5.0 l
- Carried at the side, carrying straps
- Hose 2.0 m, oil proof, transparent
- FPM (Viton) seals, oil resistant
- Special flat spray nozzle, plastic
- Spray wand, plastic, 48 cm, 360° rotatable
- Professional pump
- Pressure relief valve
- Integrated dirt filter



MESTO PROFI PLUS 3270P is a 10ltr working capacity plastic heavy duty construction sprayer fitted with Viton seals that allows use with products that have hydrocarbons in them, such as Mould oils, Chemical Release agents, and curing agents.

SPECIFICATION

Plastic tank with large pressure reservoir, 3 bar

- Total content 12.5ltr
- Working capacity 10.0ltr
- carried at the side
- seals: FPM ("Viton")
- brass 110° flat fan nozzle 8001 fitted as std.
- brass spray wand 50 cm, 360° rotatable
- spiral hose 2,5 m with integrated dirt filter



Application Sprayers



Pack Size

Each

Gloria 410 T Special (10 ltr working capacity)

The "Rolls Royce" of heavy duty sprayers, very robust!

Features include:-

- All metal galvanised epoxy coated tank.
- Viton chemical resistant seals.
- All brass fittings with two in line filters.
- Pressure release valve & Pressure gauge.
- Sealed Pump Unit
- Carry strap.
- Full spares availability.



Pack Size

Each

Ik12BS Knapsack Sprayer

12ltr Heavy duty Knapsack Sprayer suitable for spraying aggressive chemicals that would normally attack metal components.

Features include :-

- Visible filling level
- Viton chemical resistant seals.
- Can be used either right or left handed.
- Filters in nozzle and in the tank filling neck.
- Angled spray head with cone spray nozzle.

Fluid Handling

Barrel Pumps



This Oriental Koshin Metal Rotary pump is a top quality pump not to be confused with other pumps that look similar. It is suitable for lubricating oils, fuel oils, paraffin, and anti-freeze - it is **not suitable** for water based or corrosive products. Comes with discharge tubing Delivers approx 20ltrs per 72 revolutions.



The Acid resistant Rotary pump is suitable for all types of chemicals including acids, mould oils and diesel. It is constructed from PVC with Teflon vanes, viton seals and stainless components. Dispenses 250cc per revolution, and 2.7ltrs minutes max. Comes with bungs for a 2" BSP opening



The Plastic Stroke Pump is suitable for all products. It dispenses approx. 250ml per vertical stroke. Comes complete with adaptors to fit most 205ltr Drums.

Drum Taps for 200ltr , 205ltr or 210ltr drums



3/4" BSP & 2" BSP high flow taps in polyethylene are suitable for use with most acids and alkalines. The 2" model is capable of emptying a 205ltr drum in 3 minutes.

Thread adaptors



Adaptors are available to suit different types of barrels:-

Mauser Thread adaptor (Blue) for 2" Flow King Tap or pumps , Generally needed on 200ltr continental plastic barrels.

Reike Trisure Drum Tap Adaptor (Orange) for 2" Flow King Tap or pumps, generally needed on 200ltr UK plastic barrels.

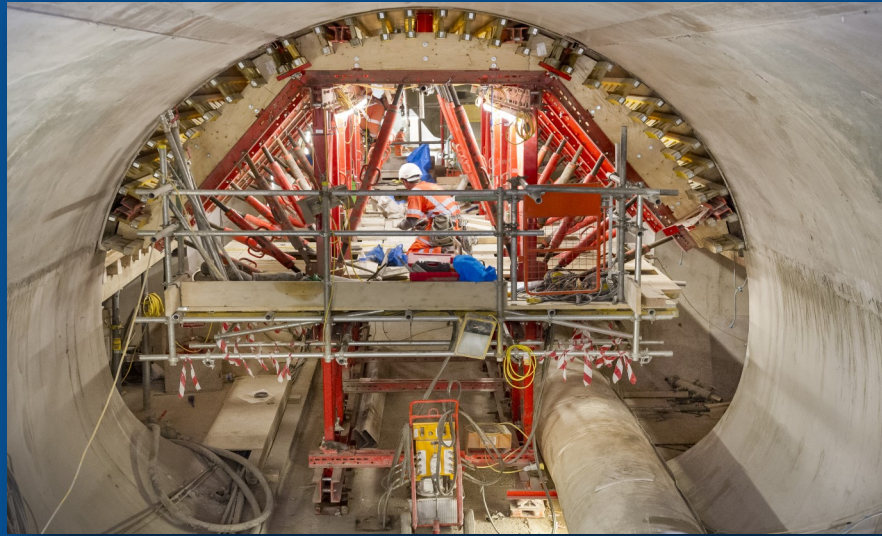
Trisure Drum Closure Plastic 2"-3/4" (White) allows the fitment of 3/4" taps to 200ltr UK plastic barrels.

Sump Pallets & Drum Stand



Plastic sump pallets suitable for 1,2 or 4 drums.

Metal Drum stand suitable for use with 200ltr, 205ltr 210ltr & 220ltr drums



Courtesy of
PERI

Formwork Products

Tierod Components

Tierod System Anchors

Reinforcement Continuity Strip

Permanent Formwork

Disposable Column Formers

Formwork - Repair and Protection

Formwork Application Sprayers

Sprayer Spares & Parts

Tierod Components



Pack Size
1.5m, 6mtr x 15mm
6mtr x 20mm

Dywidag Tie Rod 15mm & 20mm System

High Tensile Tie Rod specifically designed for use with Formwork for all types of concrete structures. SWL for 15mm is 90Kn and 20mm is 160Kn.

Custom lengths to order.



Pack Size
15mm / Each
20mm / Each

Dywidag Wing Nuts 15mm & 20mm System

A 'Knock On' wing nut, self coloured to suit 15mm and 20mm Tie Rod systems.



Pack Size
15mm Pressed /Ea
15mm Plain /Ea
20mm Plain / Ea

Waler Plates Pressed & Plain.

Pressed 120mm x 120mm x 10mm

Self coloured

Plain 120mm x 120mm x 12mm

Self coloured

20mm Plain 120mm x 120mm x 20mm

Self Coloured



Pack Size
Connection / Each
Hex / Each

Connection Nuts & Hex Nuts

Used for joining tie rods, complete with centre stop for equal spacing, self coloured to suit 15mm Tie Rod. Hex Nut for restricted access or locking nut.



Pack Size
Barrier / Each
Reducer / Each

Water Barrier for 15mm Tie Rod & Reducer

Used in water retaining structures. Cast into the concrete wall between two separate rods. After pouring tie rods are removed and the water barrier remains in-situ. Two plastic reducers are required so that 22/26 Spacer Tube can be fitted.



Pack Size
Each

Waro Water Barrier for spacer tube

The Waro barrier is slipped onto 22mm spacer tube to prevent water seepage tracking along the tube. It is recommended that the sealing ring is moistened before fitting. *Not suitable for high pressure water.*



Pack Size
22/26mm x 2m x 25no.
26/32mm x 2m x 25no.

Rigid PVC Spacer Tube

Used as protection over tie rods so they can be withdrawn, and also serve as distance spacer between formwork faces. Supplied in packs of 2m lengths. Diameters :-

22mm i.d./ 26mm o.d. For 15mm Tie rod

26mm i.d./ 32mm o.d. For 20mm Tie rod



Pack Size
22/10mm x 500pp
22/50mm x 250pp
26/12mm x 500pp
26/50mm x 250pp

Cones - Expendable

Used on the end of plastic spacer tube, and removed when formwork is struck. Available giving concrete cover of 10mm & 50mm.



Pack Size
Each

SKK Cone

A special steel cone for use with 15mm tie bar and M24 bolts in climbing shuttering situations. It is used when a recess has already been made with the MKK Cone above. The SKK cone is tightened and released with a special spanner.

MKK Cone

A special metal & plastic cone that is reusable. For use when tie rods have to be left in the concrete or for when a leading cone is used for climbing shuttering. Fitted with a built in centre pin. The cone is removable with the special spanner.

Pack Size
Each

Weldable Anchors (Fitsch Anchor)

Metal anchors that can be welded to sheet piling, RSJ's etc. to accept 15mm tie rods. Anchors must be continuously welded all the way round. Load test should be conducted before use.

Pack Size
Each

Form-Anchor (Stainless Steel Grade 304)

The Form-Anchor is versatile, non-corrosive and is used mainly for the securing of Single Sided and Climbing Formwork Shutters. It is easily fixed by use of a pre-fitted locator, which also gives suitable cover to the rebar for making good when the Form-Anchor becomes redundant. No need for drilling of plywood as with many other systems. Can also be used for securing of Slab Edge Formwork, Guard Rails, etc. For use with 15mm Thru Tie Rods . Thread length 65mm , Failing Load 100KN, Length 130mm

Pack Size
Each

Cast in Stainless Anchor (Stainless Steel Grade 304)

Used mainly for the securing of Single Sided and Climbing Formwork Shutters. It is easily fixed by use of a pre-fitted locator, which also gives suitable cover to the rebar for making good when the Anchor becomes redundant. No need for drilling of plywood as with many other systems. Can also be used for securing of Slab Edge Formwork, Guard Rails, etc. For use with 15mm Thru Tie Rods, Thread length 65mm , Failing Load 50KN, Length 95mm

Pack Size
Each

Cast in Plastic Anchor, Uni-Sleeve Anchor

Used mainly for the securing of Single Sided Formwork Shutters, as well as edge formwork, scaffolding brackets etc. It is easily fixed by use of a pre-fitted locator, which also gives suitable cover to the rebar for making good when the Anchor becomes redundant. No need for drilling of plywood as with many other systems. For use with 15mm Thru Tie Rods. Thread length 65mm, Safe working Load 27KN, Length 70mm

Pack Size
Each

Rock Anchor for 15mm Tie Rod

For securing single sided formwork to rock or concrete walls. Hole diameter required 35-37mm. Conduct tensile tests before applying final load. Technical details on request. 20mm Version available.

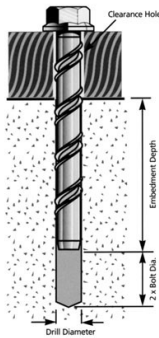
Pack Size
Each

Tie Rod Drop in Anchor 15mm

The Drop in Anchor is specially designed for use with 15mm Tie Rod bars. It is ideal for low load applications, such as fixings for hand rails into existing concrete. Concrete strength needs to achieve 15N/mm before use, which means that the anchors are often installed the next day after concreting. Anchors are set with the dedicated setting punch ordered separately.

Pack Size
Each


Tierod Systems Anchors


Size Available
M12 x 100mm
M12 x 150mm
M16 x 150mm
M16 x 200mm
M20 x 100mm
M20 x 150mm
Excalibur Screwbolts

The Excalibur Screwbolt's unique twin helical thread ensures high tensile-shear-close to edge and centre spacing safe loadings. Wood, concrete block, brick and all grades of structural concrete are Excalibur Screwbolts' major areas of application. It can also cut a thread into steel. Excalibur Screwbolt's versatility enable it to replace virtually all the traditional masonry fasteners currently available. The Screwbolt has been tested to UEAtc M.O.A.T 49 1992 standards. It makes an ideal re-usable push pull anchor.


Pack Size
8kg
DiChem Tiestop

A fast setting, shrinkage compensated, pre-packed, polymer modified, cementitious Tiehole filler. A structural grade cement that can also be used for general repairs. Simply mix with clean water, a measuring scoop is provided to give correct mix ratios. Chloride free and completely waterproof, with very high bond strengths. If colour matching is required, fill the tiehole shallow and finish with Matchpatch.

Complies with clause 6 of DTP Standard (BD 27/86). WRAS & DWI Regulation 31(4)(b)

Yield = 4ltr


Pack Size
20mm x 1000pp
22mm x 1000pp
26mm x 500pp
Application Tool
Flupps

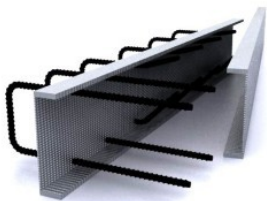
A stopper made from a resilient synthetic rubber material. Used to plug the plastic tie tube and is then covered with **DiChem Tiestop** to form a watertight seal. Used in water retaining and highway structures in particular. Applicator designed to aid fitting of Flupps without puncturing them.

Reinforcement Continuity Strip

COMAX Reinforcement Continuity Strip

COMAX® is one of Europe's premier reinforcement continuity systems. With continuous product development over a 25 year period the customer can be confident in using a system that has been incorporated into some of Europe's most prestigious civil engineering projects. COMAX® has been used to simplify and accelerate construction in a wide range of construction fields from tunnelling to slip forming in some of Europe's tallest Structures.

With the intrinsic benefits of the COMAX® casing, it offers ease of access to an infinite range of special shapes and sizes, not to mention a readily available stock of standard profiles. You can be sure that COMAX® will offer an engineered solution with no compromise to the original design brief, whilst offering significant benefits to traditional construction methods.


Advantages:

The advantages in forming structural joints in concrete utilising COMAX® over more traditional methods are manifold. The COMAX® system allows the repeat use of moulds as the need to have starter bars protruding through the form is negated. Where previously the mould would be damaged on removal, now it is simply oiled and re-used. This in turn leads to a much safer working environment as the dangerous protruding starter bars are safely housed within the robust COMAX® casing.

Due to the nature of the COMAX® system, it is ideally suited for slip form and jump form producers. Where bars would previously have had to be drilled and fixed after the formwork had passed, using the COMAX® system the bars are simply pulled out into position.

This also has safety benefits as there is an overall reduction in the amount of exposure to vibrating machinery.

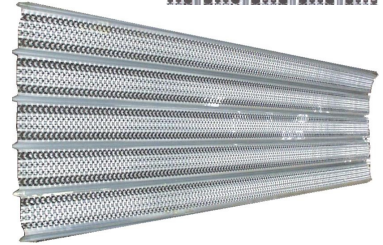
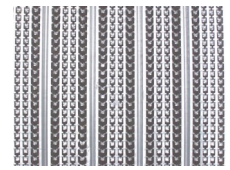
The simplicity of the COMAX® system and the infinite variety of bar shapes and sizes, means that complex concrete details can be reduced to a small number of basic pours. This in turn allows larger concrete pours to take place and simpler more cost effective formwork to be utilised, resulting in significant time and monetary

Permanent Formwork
Form Rib Permanent Expanded Formwork
Similar to Hy-RibType 2811

A zinc coated expanded metal mesh with U-ribs to give the sheet strength. It is used on site in lieu of normal formwork to provide stop ends and a construction joint key for the next pour without the need for further surface preparation.

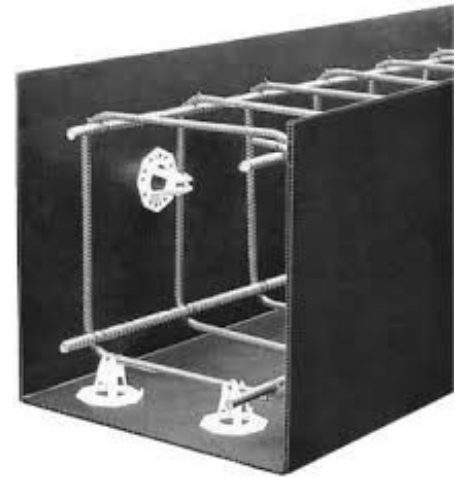
3m sheets available to order

Site Installation booklet available, this gives all design criteria for safe use of this product.

Sheet Size
2m x .445m

BEAM-FORM Permanent Shuttering System Shuttering

BEAM-FORM provides the contractor with a rapid and cost effective method of constructing concrete ground beams and pile caps. Manufactured from heavy duty polypropylene in 8mm thickness, the system has many advantages over traditional timber or steel pan construction.

Cut to size on site by the contractor

Sheet Size
4.4m x 2.4m
4m x 2m

Advantages:

- Can be bent to form any ground beam detail
- Requires less excavation than traditional shuttering
- Light but rigid so easily handled
- Supplied flat pack so requires minimal storage space
- Reduces over dig and spoil cartage
- Easily installed and cut to exact dimensions
- Minimises concrete wastage
- No stripping, cleaning or release agents are needed
- Easily adapted to suit services and variations on site

To compliment installation of Beam-form we offer the following accessories - Full range on pages 23 & 26

Plastic grade plate spacer with ability to grip 6mm to 16mm diameter bars without the need for tying.

Two sizes are available. 40/50mm cover and 65/75mm cover.

Recommended spacing is 8 per square metre.

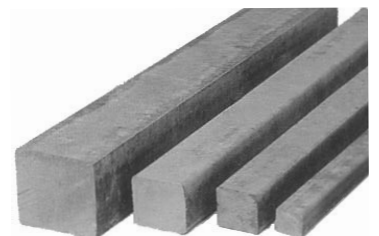


Tric-Trac Continuous heavy duty plastic spacer, these spacers are supplied in 2 metre lengths. Sizes available 40mm, 50mm and 70mm.

Ideal for precision alignment of beams.

Concrete Square bar manufactured to a high standard and comes in 1 metre lengths. Sizes available 40mm or 50mm high.

Recommended for use in the bottom of heavy beam cages and pile caps.



DiChem PVC Tape has excellent adhesive qualities, so protecting against grout loss at joint and intersections.

Roll Size 50mm x 33m rolls. Quantity: 1 roll per 30m² of Beam-form.



Formwork Shuttering - Disposable Column Formers

BAG® Column Formers



Single use formwork system that gives an excellent smooth fair face surface finish. Our Column Formers are manufactured by welding together several layers of high quality polyethylene coated kraft paper, which are spirally wound and bonded together by heating the polyethylene. Once this step is complete, a water resistant foil is also spirally wound over the kraft paper, sealing the column against humidity. This manufacturing process requires no additional adhesives which reduces the wall thickness, making the BAG® Columns light and easy to handle.

Designs:

Lined - BAG® Column Formers have a PVC liner which is fitted the whole length of the inner diameter of the Column Former, this provides an impeccably smooth finish. BAG® Column Formers will only leave a hairline seam on the concrete from the point where the liner joint meets.

Unlined - BAG® Column Formers are also available unlined for applications where surface finish is not critical. This Column Former will leave a spiral effect on the finished column.

Square - BAG® can offer square or rectangular columns on request, made from our standard Column Former with an additional polystyrene insert, manufactured to your specific requirements.

Bespoke - BAG® can also offer made to order bespoke designs. Please contact our sales team for more details.



Site guide to requirements

Tube I/D (mm)	Tube Wall Thickness (mm)	Maximum Pour Height (mtr)	Concrete Required (m ³ /mtr)	Weight (kg/mtr)
150	2.80	6.0	0.018	1.24
200	2.80	6.0	0.031	1.63
240	3.20	6.0	0.045	1.96
250	3.20	6.0	0.049	2.08
300	3.20	6.0	0.071	2.38
350	3.70	6.0	0.096	3.09
400	4.10	6.0	0.126	3.52
450	4.10	6.0	0.159	4.50
500	4.60	6.0	0.196	5.44
550	4.60	6.0	0.237	5.99
600	5.00	6.0	0.283	6.53
650	5.00	4.0	0.332	7.16
700	5.00	4.0	0.385	7.71
750	5.00	4.0	0.442	8.26
800	5.50	4.0	0.502	8.81
850	5.50	4.0	0.567	9.36
900	5.50	4.0	0.636	9.91
950	5.50	4.0	0.708	10.46
1000	5.90	4.0	0.785	11.11
1100	5.90	4.0	0.950	12.11
1200	5.90	4.0	1.130	13.21

Advantages:

- Light easy to handle as opposed to steel shuttering.
- Labour saving.
- Easy to strip, no mould oils required.
- Quality fair faced finish.
- Can be used for protective cover for the completed columns.

Water Resistant:

The column formers are water resistant due to the manufacturing process and the outer layer of foil, both of which seal the column former against humidity. Protection will be required when stocking in direct contact with rain and water.

Pouring:

Concrete can be poured into the BAG® Column former via skip or bucket for diameters of up to 450mm and lengths of 4 metres. Larger sizes will require concrete to be placed by a pump and hose. Concrete should be placed slowly to

eliminate air entrapment between the tube liner. Do not force column formers into position.

DISCLAIMER:

Please note BAG® Column Formers are Water Resistant, not Water Proof.
The concrete pour speed should not exceed more than 4 metres per hour.

Formwork Shuttering - Repair and Protection
Norsekem Shuttafill

A general purpose formwork repair kit containing a pre-mixed polyester resin paste to which the reactive hardener is added. Simple to mix and apply. Rapid setting: starts to set in 5-10 minutes. Can be sanded in 30 minutes and is ready for painting in 45 minutes at normal room temperature. Excellent adhesive qualities. Flexible – expands and contracts, totally compatible with a sound substrate. Highly resistant to impact and abrasion. Resistant to water, seawater, oil, petrol, atmospheric chemicals and frost. Can be sanded by hand or machine to a 'feather edge' for an invisible repair when painted. Can be carved, shaped, drilled and tapped. Takes nails, screws, most paints and varnishes.

Colour :- Phenolic Board Brown & Grey.

Pack Size
Brown - 1.5kg
Brown - 7kg
Grey - 7kg


Norsekem Shuttawax

Specifically developed for the initial sealing of various formwork surfaces. Based on crystalline waxes and with a fugitive dye, which will not stain permanently. Its economy of use, speed of application and compatibility with most types of release agent make it the ideal preservation sealer. It is not in itself a release agent. Can be applied to new or old, damp or dry, formwork surfaces. Prevents veneer damage, furring, cracking or separation. Reduces the possibility of porosity variation, woodsugar migration and subsequent hydration staining. Standardises absorbency differences between dissimilar plywoods, hardwoods, wood chippings, etc., which could cause noticeable colour variation in concrete surface finishes. Easily applied using rag, minute mop, brush, or squeegee, forms are ready to use in one hour after treatment.

Coverage: 10m²/kg depending on porosity

Pack Size
20kg


Norsekem Formseal PU 1K

Clear, penetrative, solvent based one part polyurethane sealer specifically developed for the concrete industry to seal formwork ply and special timber features. It is principally used to extend the life of formwork panels or wood features and to standardise absorbency in the timber. It is also capable of being applied to damp timber unlike many competitor 2 part solvent borne systems. Product is diluted with Formseal PU Thinners to produce a primer coat, normal thinners must not be used.

Coverage: 4 - 5m²/ltr depending on porosity

Pack Size
5 ltr


Norsekem Metalguard RPS

Rust preventative. Versatile thixotropic de-watering coating, ideal for long term outside storage, up to two years, of Steel Forms. Thermally stable and self sealing, resistant to fire, UV degradation, salts, microbes etc. Weldable without removal. One coat application by sprayer, roller, brush or by dipping. Coating can be removed using Solvkleen or hot pressure washing.

Coverage: 20 - 25m²/ltr

Pack Size
25 ltr


Norsekem Edgesal PU 1K

Dyed blue, penetrative, moisture cure PU 1K seal is specifically developed for the concrete industry to seal cut and exposed edges on all types of formwork ply or to treat and holes for tie rods etc. The blue colour provides easy visual verification that the edges have been treated.

Coverage: 6 - 10m² /ltr

Pack Size
5 ltr



Formwork Shuttering - Accessories

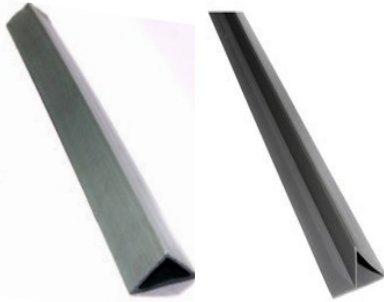


Pack Size
Coil - Standard
Per KG-Stainless

Tying Wire

Standard grade 17 gauge black soft annealed wire for tying of reinforcement.

Stainless Steel 18 gauge wire for tying of reinforcement. Supplied in catch weight coils and charged per kg



Pack Size
11mm x 100m Std
11mm x 100m Lip
20mm x 100m Std
20mm x 100m Std
25mm x 100m Std
25mm x 100m x Lip

Corner Fillets / Chamfer

Manufactured from impact resistant PVC. Used to form chamfered edges to beams, columns and walls. Two types available, one with nailing flange (lip), one without.

Range of sections are available:

25 x 25mm, 20 x 20mm, and 11 x 11mm

30 x 30mm and 15 x 15mm sizes available to order.

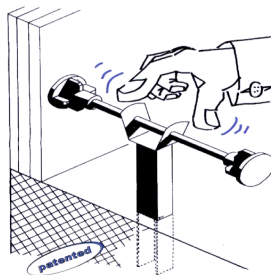
All sections are 2.5 metres long



Size / Pack Size
6-18mm / 250no.
16-32mm / 250no.
40-50mm / 100no.

Re-Bar Identification Caps

A strong high visibility plastic cap which fits securely onto re-bar ends for safety of site personnel. Sized to suit all popular bar sizes. Other types to protect against impalement are available.



Code / Wall Size
KLA / 150mm
KLA / 175mm
KLA / 200mm
KLA / 225mm
KLA / 250mm

Cast in Kickers - Kik-LoK

Dispenses with the need to pour concrete kickers. These anchors are simply pushed into the fresh concrete along the approximate centre line of the wall being produced. Once the concrete has set, the spacer rod can be easily and precisely adjusted by pinching the spring mechanism to allow spacer rod to move from side to side. This product reduces material/labour costs and speeds pour sequence.

50 per box



Size
48mm dia x 30mm

Plastic Kickers

Dispenses with the need to pour concrete kickers. These Kickers are simply fixed by use of a masonry nail (not supplied) to the slab and used to locate the formwork panel against it to give the correct width.

100 per pack



Code / Wall Size	Per Pack
KB / 100mm	100
KB / 150mm	100
KB / 200mm	100
KB / 250mm	50
KB / 300mm	25

Adjustable Kickers

Adjustable Kickers are used to space wall shutters thus eliminating the need for a traditional kicker. They can be located in the centre of the wall with a cap on each end (double sided) or offset with one cap only (single sided) where a waterbar is present, or in a wide wall.

Formwork Shuttering - Accessories

DiChem FORMSIL HMA Multi Purpose Silicone (Clear)

A high modulus silicone sealant that cures quickly to provide a flexible seal. Good adhesion but easier to remove than most makes this an ideal silicone for sealing gaps in formwork construction or for grout check against kickers etc.

Size	Per Pack
310ml	25



Applicator guns are of all metal construction and take both 400ml, 380ml & 310ml cartridges

Size	Per Pack
N/A	Each



DiChem FORMFOAM Hand Held Expanding Foam

Easy to use, Polyurethane based expanding foam for general Construction and Building applications. For filling large, irregular or awkward gaps, fixing window and door frames, insulating between cladding and brickwork, around ductwork. As a joint backing material, can be used with all types of sealant. Filling crash barrier post sockets etc. Ozone friendly. Expands up to 30 times own volume. When cured the foam can be cut, sawn, painted and plastered on.

Size	Per Pack
750ml	12



Gun Grade Expanding Foam

Specification same as Hand Held Foam, however must be used with a Gun Grade Applicator or NBS system dispensing gun. Ideal for accurate and repetitive placing of foam.

Size	Per Pack
700ml	12

Size	Per Pack
N/A	Each



Gun Grade Application Gun

PU Foam Cleaner

Multi-Function cleaner that digests and removes uncured PU foam from the majority of gun grade and hand held applicators, so that they can be re-used

Unit size :- 500ml Canisters.

Size	Per Pack
500ml	Each

All Purpose tape - (Stick 2, Gaffa, Duct tape)

A top quality, waterproof, cloth reinforced tape. Adheres to nearly all common materials. Each roll is individually wrapped for convenience and storage. Colour :- Silver

Size	Per Pack
50mm x 50m	24



Di-Tape PVC Formwork Tapes

A tough, thin, PVC tape, with a matt finish, specially designed to adhere to all types of formwork to prevent grout loss. Resistant to oil and damp. Comes in two types **Standard** and **High Tack**. The later has a more aggressive adhesive. Suitable for use on plastic surfaces i.e., GRP, Polypropylene or Cordek moulds, also for jointing PVC sheeting.

Size	Per Pack
50mm x 33m	24 STD
50mm x 33m	18 HT



Di-Chem Foam Tapes

Used to seal butt joints, kicker bases etc. against grout loss. Can also be used for draught excluding.

Available in a variety of sizes and types:- HxWxL

Type 1- Black, Polyethylene, 6mm x 12mm x 10m

We are able to supply other sizes to order please enquire.

Size	Per Pack
6mm x 12mm 10m	24



Formwork Application Sprayers

GLORIA
Gloria 410T Special (10 ltr working capacity)

The "Rolls Royce" of heavy duty sprayers, very robust! Features include:-
 All metal galvanised epoxy coated tank.
 Viton chemical resistant seals.
 All brass fittings with two in line filters.
 Pressure release valve & Pressure gauge.
 Sealed Pump Unit.
 Carry strap.

MESTO FERROX PLUS 3585P

10ltr working capacity metal, heavy duty construction sprayer fitted with Viton seals that allows use with products that have hydrocarbons in them, such as Mould oils, Chemical Release agents, and curing agents. Built to last and withstand heavy use.


MESTO PROFI PLUS 3270P
MESTO

10ltr working capacity plastic heavy duty construction sprayer fitted with Viton seals that allows use with products that have hydrocarbons in them, such as Mould oils, Chemical Release agents, and curing agents.

MESTO FIX PLUS 3237FP

5ltr working capacity plastic construction sprayer fitted with Viton seals that allows use with products that have hydrocarbons in them, such as Mould oils, Chemical Release Agents, Curing Agents, as well as retarders. Excellent value for money sprayer.


Ik12BS Knapsack Sprayer


12ltr Heavy duty Knapsack Sprayer suitable for spraying aggressive chemicals that would normally attack metal components.
 Features include :-
 Visible filling level
 Viton chemical resistant seals.
 Filters in nozzle and in the tank filling neck.

Alta Model SA2-V Sprayer - Acid Resistant

1.8 litre working capacity, made from polypropylene, polyethylene and plated steel, with Viton seals. Will not break if dropped.
 Plated metal rod pump, for extra strength
 Long-reach lance, giving access to difficult areas. Fully adjustable nozzle, allowing you to produce a fine spray, a coarse spray or a jet spray.


Sprayer Spares & Parts
GLORIA®

Parts Code	Description
712040V	Trigger Assembly for Gloria Sprayers
00-900BR1	Com. Nozzle Ass
701310V	Brass Lance
951860	Gloria Seal Service kit
00-605/VR	Replacement Hose
509780	Piston O-Ring
706490V	Piston end Components
N800*	Spare Nozzle

MESTO®

Parts Code	Description
1348LN	Trigger Assembly for FERROX Sprayers
1421F	Com. Nozzle Ass FERROX/PROFI PLUS
3650	Lance for FERROX & PROFI PLUS
6001L	Mesto Service kit (FERROX/INOX)
6322PP	Coily Hose for FerroX Plus
1399L	Trigger Assembly for PROFI PLUS
6325NR	Coily Hose for Profi Plus
6308M	Trigger for FixPlus
6300VF	Replacement Hose 2m
3654PF	Spraylance 40 cm PP flatspray



Reinforcement / Slab Accessories

Concrete Spacers

Plastic Spacers

Wire Chairs

Screed Rails / Screed Chairs

K-Form UPVC Screed Rail System

Crack Inducers / Void Formers / Dowel Bars & Accessories

Bolt Boxes & Cementitious Grouts

Joint Fillers

Re-bar Couplers

Site Protection

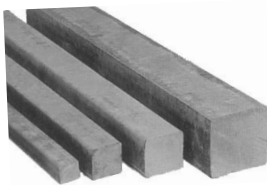
Concrete Spacers



Code / Cover	Per Pack
D 25/30	500
D 30/30	250
D 40/40	200
D 60/75	50
T 20/25/30	500
T 35/40/50	200



Code / Cover	Per Pack
MB 40/50	100



Code / Cover	Pallet
SB/25	600
SB/30	600
SB/40	300
SB/50	250
SB/60	150
SB/75	100

Double / Triple Cover Concrete Spacers

Used for supporting heavy duty reinforcement in both horizontal and vertical applications. The triple cover spacer gives minimum contact with the formwork and can be wired to space vertical reinforcement. The double cover spacers provide a flat base making them ideal for use on membranes.

Mesh Block Spacers

Used for supporting heavy duty fabric and bar reinforcement off soft blindings or membranes. It gives two different covers of 40mm or 50mm.

Square Spacer Bar / Mars Bar

Used for supporting large reinforcement in heavy duty slabs. Suitable for placement on polythene membranes. Supplied in 1 metre lengths

Plastic Spacers



Code / Size	Per Pack
TT 15mm	100m
TT 20mm	100m
TT 25mm	100m
TT 30mm	100m
TT 35mm	60m
TT 40mm	60m
TT 50mm	60m

Continuous Plastic Spacer - Tric Trac

A versatile and stable plastic spacer for the support of reinforcement in horizontal and vertical applications. Easily and quickly positioned with no wiring required. Ideal for use on hollow ribbed decks. Can be used upside down to lay flat on membranes. Can be easily cut or sawn to your required length. Supplied packs of 2.5m lengths.



Code / Size	Per Pack
GP 25/30mm	250
GP 40/50mm	200
GP 65/75mm	200
GP 90/100mm	100

Grade Plate spacer / Meshfix Spacer / Top hat Spacer

Used for supporting 6-20mm reinforcement in ground floor slabs. The large base helps stability and prevents puncturing of polythene membranes or insulation materials. Each spacer has dual cover.



Code / Size	Per Pack
PWS 15/4 - 10	1000
PWS 20/4 - 12	2000
PWS 20/10 - 14	1000
PWS 20/12 - 20	250
PWS 25/4 - 12	1000
PWS 25/10 - 14	1000
PWS 25/12 - 20	250
PWS 30/4 - 12	250

Plastic Wheel Spacer

Ideal for use with vertical reinforcement, this spacer simply clips in place onto the bar. Its design provides minimum contact with the formwork.

Code / Size	Per Pack
PWS 30/12 - 20	125
PWS 35/4 - 12	200
PWS 35/12 - 20	500
PWS 40/4 - 12	125
PWS 40/12 - 20	250

Code / Size	Per Pack
PWS 50/4 - 12	250
PWS 50/12 - 20	250
PWS 60/12 - 20	250
PWS 70/12 - 60	250
PWS 100/4 - 18	50

Plastic Spacers

Plastic Clip on A Spacer

Ideal for use with both horizontal & vertical reinforcement, this spacer simply clips in place onto the bar. Its design provides minimum contact with the formwork.

Code / Size	Per Pack
A 15/4 - 16	2000
A 20/4 - 16	1000
A 25/4 - 16	1000

Code / Size	Per Pack
A 30/4 - 16	1000
A 35/4 - 16	1000
A 40/4 - 16	500
A 50/4 - 16	500
A 65/4 - 16	500
A 75/4 - 16	500



Wire Spacers

Continuous Wire Deck Chairs - Heavy Duty Wire Deck Chairs

Used for supporting top reinforcement or bottom Fabric in concrete slabs. Can also be used as dowel bar supports. Up to 400mm available.

Code/Height	Per Pack
DK 50mm	25no. X 2m
DK 60mm	25no. X 2m
DK 75mm	25no. X 2m
DK 90mm	25no. X 2m
DK 105mm	25no. X 2m
DK 120mm	25no. X 2m
DK 135mm	25no. X 2m

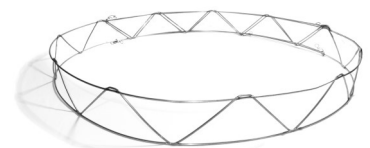
Code/Height	Per Pack
DK 150mm	25no. X 2m
DK 165mm	25no. X 2m
DK 180mm	25no. X 2m
DK 200mm	25no. X 2m
DK 220mm	20no. X 2m
DK 230mm	20no. X 2m
DK 250mm	20no. X 2m
DK 270mm	20no. X 2m
DK 280mm	20no. X 2m
DK 300mm	20no. X 2m



Wire Hoop Spacers

A circular spacer for supporting mesh reinforcement in slabs. Supplied in 3m lengths which are then bent and tied on site to form a 1m hoop. Typical 3-4 hoops are used per sheet of mesh.

Code/Cover	Per Pack
WH 50mm	100no.
WH 60mm	100no.
WH 75mm	100no.
WH 80mm	100no.
WH 105mm	100no.
WH 120mm	100no.
WH 135mm	100no.
WH 150mm	100no.
WH 165mm	100no.
WH 180mm	100no.
WH 200mm	100no.



Tying Wire

Standard grade 17 gauge black soft annealed wire for tying of reinforcement. Recognised as a premier grade wire.

Stainless Steel 18 gauge wire for tying of reinforcement. Supplied in catch weight coils and charged per kg

Pack Size
Coil - Standard
Per KG-Stainless



Screed Rails



Code/Height	Per Pack
CSR 50mm	3.9m
CSR 80mm	3.9m
CSR 100mm	3.9m
CSR 125mm	3.9m
CSR 150mm	3.9m

Flat Top Concrete Screed Rails

A very sturdy rail developed to improve and speed the laying of concrete floor slabs by allowing continuous pouring of adjacent bays the same day. A single line of support holes at 300 centres is incorporated for mesh slabs. Rails are laid on soft lean concrete, which is heaped up distances of 800-1000mm apart. Rails can be cut.



Code/Height	Per Pack
MSR 65mm	3.9m
MSR 90mm	3.9m
MSR 115mm	3.9m
MSR 140mm	3.9m
MSR 165mm	3.9m

Metal Top Concrete Screed Rails

Developed to help achieve a superflat surface, this design with its metal top profile provides a fully controlled hairline crack. A single line of support holes at 300 centres is incorporated for mesh slabs. Rails are laid on soft lean concrete, which is heaped up distances of 800-1000mm apart. The rail is then levelled.



Code/Height	Per Pack
MCSR 27mm	2m
MCSR 55mm	3m
MCSR 75mm	3m
MCSR 100mm	3m
MCSR 120mm	3m
MCSR 145mm	3m

Metal Concrete Screed Rails

A lightweight and easy to handle rail which needs minimal storage. Very robust, will not damage in transport and is galvanised to prevent rusting. Rail is supplied complete with steel holder for fixing and plastic clips to fix the end together. A single line of support holes at 300 centres is incorporated for mesh slabs. Length:- 3.0m

Screed Chairs



Type/Depth	Per Pack
Type 1 / 120-155	50no.
Type 2 / 145-205	50no.
Type 3 / 195-305	50no.
Type 4 / 295-405	50no.

Standard Metal Screed Chairs

A stable two part adjustable metal screed chair for concrete floor slabs from 120 – 405mm thick. 4 Sizes available.



Type/Depth	Per Pack
HD50 / >500mm	Each

Heavy Duty Metal Screed Chairs

A heavy duty reusable screed chair. Built from 16mm steel bar, to take on site punishment. It is fully adjustable for slab heights up to 500mm and once the height has been set, the twin locking nut ensures it stays set.



Component	Per Pack
Base	250no.
Collar	250no.
Saddle	250no.
Shaft	100m

Plastic Screed Chairs

Lightweight corrosion free screed chair, comes as four unassembled components. Suitable for use with timber rails or scaffold tubes for slabs 150-350mm in height. Shafts are cut on site from standard 22/26 spacer tube. Recommended spacing of 50cm will give a stable support.

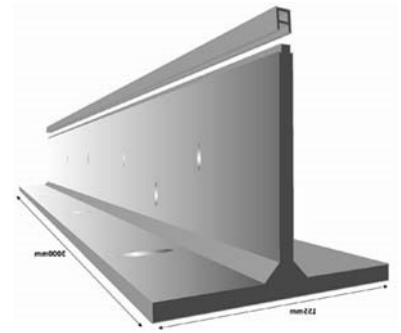
K-Form - UPVC Screed Rail System

K-FORM—UPVC Screed Rail System

K-FORM UPVC Screed Railing provides the construction industry with an economical, efficient and environmentally friendly alternative to steel shuttering.

Made from recycled materials, K-FORM is lightweight, durable and does not require removal after concrete pouring. It is easily cut to length on site and has pre-drilled holes in the vertical face for locating steel dowels bars and in the base for mortar anchoring. Furthermore, K-FORM's patented design features a built in expansion joint, end clips for joining and a removable top strip for joint sealing.

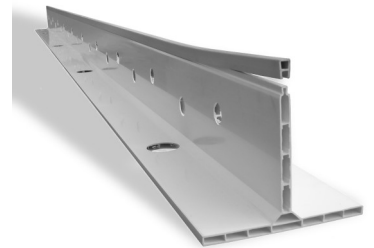
Designed to be used with twin beams, bunyan rollers or vibro strikes, K-FORM's K135 K85 and K35 disposable railing replaces steel forms where joints are needed.



ADVANTAGES

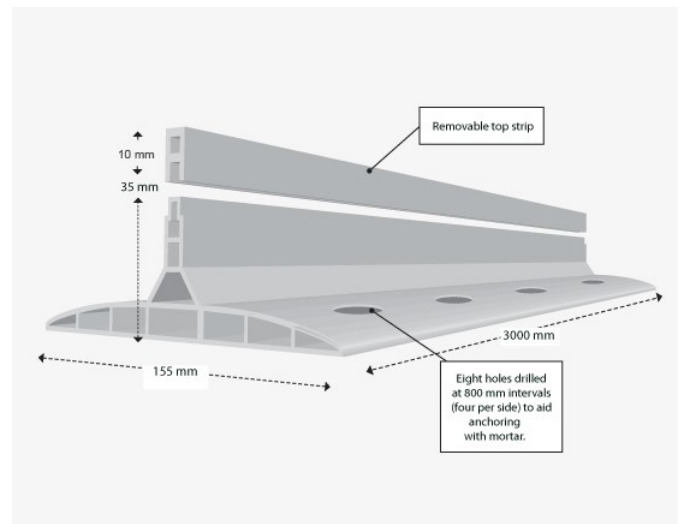
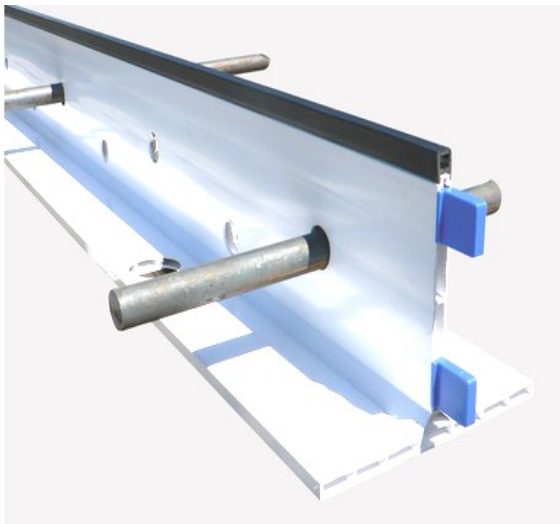
- Saves time and money
- Simple to use; the "click together" assembly means no specialist tools are required
- Lightweight; one person can install therefore reducing labour time and costs
- No removal or cleaning is required after use
- Increased pouring time means projects can be completed quicker
- Made from recycled materials
- Fuel and oil resistant
- Will not rot or rust
- Pre-drilled holes for dowel bars
- Manufactured from durable UPVC – non-metallic and non-conductive
- Integral expansion joint
- No anchoring with metal stakes
- Removable top strip
- Easy to seal concrete sections
- No diamond cutting
- No puncturing of DPM

Size
K35mm x 155m x 30000mm
K85mm x 155m x 30000mm
K135mm x 155m x 30000mm



FEATURES

- Designed for a pour of 100mm to 225mm thick concrete
- Enables adjoining bays to be poured consecutively
- Pre-drilled holes in base for anchoring with mortar
- Pre-drilled holes in vertical face for locating dowel bars
- Once concrete is poured, K-FORM is left in place; there is no need to remove and clean
- Separate wear strip can be removed once concrete is set to allow joint sealing



Crack Inducers



Type	Depth
Two Part	50mm
Two Part	75mm
'Y' Type Base	40mm
'Y' Type Base	75mm
T Bar	50mm
T Bar	75mm

Crack Inducers

Two part top crack Inducers to form stress relief joints in concrete slabs laid using the long strip system of paving. Designed for use where the top section is removed to expose a sealant void which can be sealed with a suitable sealant
Length : 5m, width at surface 10mm & 13mm

'Y' type base crack inducers are for use under concrete slabs in conjunction with top crack inducers to form stress relief joints in slabs over 300mm thick.

Length : 5m, width at base 60mm & 80mm

Aluminium T-Bar Used to form a straight groove in wet concrete prior to insertion of top crack inducers. Length : 5m

Void Formers



Size	Per Pack
20mm Full	10 x 3m
20mm Half	20 x 3m
25mm Full	10 x 3m
25mm Half	20 x 3m

Void Formers

A reusable PVC void former which can be placed on top of Bituflex sheets at expansion joints to form a void for sealants. Half section is generally used on the first pour and then the full section is used on the second pour.

Dowel Bars & accessories



Dowels Bars

We supply dowel bars in all the common sizes, in both mild steel, HT Steel in plain and ribbed finish, with either sawn or cut ends. We can also supply dowels in stainless steel grades in both ribbed and plain finishes.

Direct Chemicals offer the complete dowel bar package. *Call our technical sales team today on 0118 9892666 for a quotation.*



Size (mm)	Per Pack
12 x 450	100no.
16 x 300	100no.
16 x 450	100no.
20 x 300	100no.
25 x 300	100no.
32 x 375	92no.

Dowel Bar Sleeves

Manufactured from a high grade flexible PVC, and used to form a positive debonded dowelled joint. It overcomes the problems associated with paint on compounds, tapes, greases, etc. Foam compression plug to accommodate joint movement in expansion joints is supplied separately.



Size (mm)	Per Pack
12 x 100	100no.
16 x 100	100no.
20 x 100	100no.
25 x 100	100no.
32 x 100	50no.

Dowel Bar Expansion Caps

Manufactured from a rigid length of tube with a 25mm compressible filler in one end. When put over the sleeved dowel bar it allows movement to occur in expansion joints. It overcomes the problems associated with paint on compounds, tapes, greases, etc.



Size	Per Pack
5ltr	4no.
25ltr	1no.

Dowel Bar Paint / De-bonding Paint

For the de-bonding of dowel bars in road construction joints and floor sections. The material conforms in performance to D.O.T Specification for Road and Bridge works, clause 2605. Coverage : 1.8-3.6 m²/ ltr

Bolt Boxes & Cementitious Grouts

Bolt Boxes – Waxed Cardboard

Manufactured from waxed cardboard they allow easy bolt location and adjustment with minimum displacement of reinforcement and concrete. To allow stripping and re-use, 25mm of the cone should be left protruding and rotated before the concrete has completely set.

Approximate No. of cones per 25kg bag of grout, using M20 Bolt						
WCB1	WCB2	WCB3	WCB4	WCB5	WCB6	WCB7
36	16	9	6	5	3.5	3

Bolt Boxes – Polystyrene

Manufactured from expanded polystyrene they allow easy bolt location and adjustment with minimum displacement of reinforcement and concrete.

Approximate No. of cones per 25kg bag of grout, using M20 Bolt						
PB1	PB2	PB3	PB4	PB5	PB6	PB7
19	14	11	9	8	7	5

Holding Down Bolts

A range of holding down bolts is available in Grade 8.8 Steel. Price includes nut, washer, and a 100mm x 100mm x 10mm plate. Other sizes available to order

Norsekem Poly-dissolve & Poly-dissolve “Safe”

An emulsifiable solvent based product designed to dissolve polystyrene box outs, void formers, bolt boxes etc.

Has the ability to dissolve up to 10 times its own volume, depending on application and polystyrene density. Poly-dissolve “Safe” is a less hazardous formulation with a pleasant slight citrus smell.

Heavy Duty Plastic Levelling Shims

For non structural, temporary support and alignment of pre-cast panels, components, bases etc prior to grouting or packing. Two types are available, square and horseshoe both have overall dimensions of 70mm x 70mm. A range of sizes allow various heights to be achieved.

The Bolt Cracker

The Bolt Cracker is an innovative new invention designed to maximize holding down bolt movement. Guaranteed full movement inside the cone.

No damage to bolt head or thread during stripping stage.

Denso Tape / Petrolatum Tape

For protection of bolt heads prior to concrete pours.

Code	length
WCB1	229mm
WCB2	305mm
WCB3	380mm
WCB4	457mm
WCB5	534mm
WCB6	610mm
WCB7	762mm



Code	length
PB1	225mm
PB2	300mm
PB3	375mm
PB4	450mm
PB5	525mm
PB6	600mm
PB7	762mm



Code	length
HDB16/30	M16 x 300
HDB16/45	M16 x 450
HDB20/30	M20 X 300
HDB20/37	M20 X 375
HDB20/45	M20 X 450
HDB24/37	M24 X 375
HDB24/45	M24 X 450



Product	Size
Poly-dissolve	25ltr
Poly-dissolve Safe	5ltr
Poly-dissolve Safe	25ltr



Size	No. Per Pack
2mm	250
3mm	250
5mm	250
7mm	125
9mm	125
10mm	125
20mm	50



Code/Bolt dia	No. Per Pack
BC20 - 20mm dia	100
BC24 - 24mm dia	100



Size	No. Per Pack
50mm x 10mtr	24
75mm x 10mtr	16



Bolt Boxes & Cementitious Grouts



Pack Size

20kg

Pozament High Flow Construction Grout Easi-Flow GA

High Flow Construction Grout has been specifically designed to provide a high strength fluid grout for pouring into and under stanchion plates, machine base plates, parapet rails, for supporting bridge bearings and for filling ducts in post tensioned and pre-stressed structures. Suitable for gap sizes 10 - 100mm
Yield: 12.2 ltrs

Pack Size

25kg

Parex CS Grout

A high strength, non shrink, flowable grout which is chloride free. Low water absorption with good freeze-thaw stability plus resistance to oil, sea water and mild alkali attack. Parex CS Grout has certified compliance with **DTP** Specification for Highways Works Clause 2601. Suitable for gap sizes 10 - 100mm
Yield: 13.25 ltrs



Pack Size

25kg

Fosroc Conbextra GP

General purpose, non-shrink cementitious grouting of gap thicknesses 10 to 75 mm. Recommended applications at flowable consistency include stanchion base plates, bolt pockets and void filling.
Yield: 13.25 ltrs

Pack Size

25kg

Fosroc Conbextra HF

Supplied as a ready to use dry powder. The addition of a controlled amount of clean water produces a free-flowing grout for gap thicknesses up to 100 mm. In addition the low water requirement ensures high early strength and long-term durability.
Yield: 13.25 ltrs



Pack Size

25kg

Weber Five Star Grout

High strength, high flow grout for use under machine base plates, void filling, underpinning and crash barriers. Can be pump, poured, trowelled or dry-packed. Suitable for gap sizes 10 - 100mm
Yield: 14 ltrs

Pack Size

25kg

Parex 100 Newton Grout

An ultra high strength, non shrink grout specially formulated using a Portland cement powder mix. Powerful plasticising agents produce a highly flowing grout at low water content. Chloride free and meets **DTP** Specification for Highways Works Clause 2601 and CRD C621. Suitable for gap sizes 10 - 100mm
Yield: 13ltr



Pack Size

25kg

Parex Dry Pack C

Portland Cement based powder mix including special shrinkage compensating components. The mixed mortar can be rammed into gaps between concrete units, without the use of shuttering, to create a supporting fill. The shrinkage compensating additives ensure that the placed mortar maintains contact within the filled section. Can placed in horizontal and vertical gaps of 5mm-100mm
Yield: 11.5 ltrs

Joint Fillerboard, Cords & Strips

Miothene / Expandafoam / Aerofil 1 - Sheet / Strip / Cord*

A high performance expansion joint filler made from closed cell expanded polyethylene foam. Available in sheet or cut strips with tear off to form sealant void. It is robust, non-absorbent with excellent recoverability, low load transfer, non extruding and resistant to most acids and alkalis. *Sheet Sizes may differ on manufacture
We are able to supply any thickness required by fabrication.

Cord Dia	Length / Box
10mm	1150m
12mm	750m
15mm	350m
20mm	200m
25mm	200m
30mm	160m
40mm	270m
50mm	180m



Thickness	Sheet Size
10mm	2 x 1.2m
12mm	2 x 1.2m
20mm	2 x 1.2m
25mm	2 x 1.2m
30mm	2 x 1.2m



Thickness	Strip Size
10,12,15,20,25mm	100mm x 10m
10,12,15,20,25mm	150mm x 10m
10,12,15,20,25mm	175mm x 10m
10,12,15,20,25mm	200mm x 10m
10,12,15,20,25mm	250mm x 2m
10,12,15,20,25mm	300mm x 2m



Miothene 70 / Aerofil 2 / Hydrocell / Polyjoint 60 *

High density, high performance non absorbent, rot proof, closed cell cross linked polyethylene foam joint filler. Supplied in sheets or cut strips as required. Recommended for use in Water Retaining structures, floor slabs, bridge joints and road expansion joints. Resistant to attack by most acids and alkalis. Complies with DOT Specification for Highway Works Part 3: Clause 1015:91.
*Sheet Sizes may differ on manufacture

Thickness	Sheet Size
10mm	2 x 1m
15mm	2 x 1m
20mm	2 x 1m
25mm	2 x 1m
30mm	2 x 1m
50mm	2 x 1m



Bitumen Impregnated Fibreboard / Flexcell

A low cost, water resistant, bitumen impregnated wood fibre filler board. Minimum 20% bitumen content. Has excellent compression and recovery properties. General purpose joint filler for non-critical joints in concrete slabs and brick wall construction.

Strip and Sheet Thickness : 12mm, 20mm, 25mm.Strip Size : All strips are 2.4m long

Thickness	Sheet Size
12mm	2.22 x 1.22m
20mm	2.22 x 1.22m
25mm	2.22 x 1.22m



Other sizes are available to order

Bitumen Bonded Corkboard /Korkpak

A waterproof and durable filler board for critical joints in water retaining, civil engineering and structural expansion joints. Designed to compress and recover without extrusion under most loads encountered during construction. Consists of granulated cork, premixed and securely bonded together with a hot bituminous mixture between two sheets of heavily asphalt saturated paper. Supplied in sheets. Complies with DOT Specification for Highway Works Part 3: Clause 1015:91.

Thickness	Sheet Size
10mm	2.13 x .914m
12mm	2.13 x .914m
19mm	2.13 x .914m
25mm	2.13 x .914m



Neoprene Strip

Sponge and rubber grades available. Because of its excellent recovery it is frequently used on bridge structures and also structures that undergo rapid temperature variations.

Thickness	Size
5mm	Various
10mm	Various
15mm	Various



Re-bar Couplers



Terwa Alligator Splice off Couplers

The ALC Alligator Couplers are used for splicing any grade or profile of reinforcing bar. These couplers are made for reinforcement steel with diameters in the range of 10mm to 40mm. Connection is made by inserting bars into both ends of the coupler. The breaking bolts are then screwed by hand and tightened by ratchet wrench until bolts shear off. These couplers can be used in particular cases to replace the damaged reinforcements with new ones and to connect to the old structure.

Advantages:

- (1) No need for threading or any other bar preparation.
- (2) These are fast, simple, easy to use.
- (3) No special skilled labour required.
- (4) No welded components.
- (5) Performs as a continuous piece of rebar.
- (6) Allows for easy visually inspection.

Product Code	Bar Dia. (mm)	No. of Bolts	Bolt Thread	L (mm)	d (mm)	d1 (mm)	H (mm)	H1 (mm)	H2 (mm)	h (mm)	h1 (mm)	h2 (mm)	SW (mm)	Torque Bolts (Nm)
ALC10	10	6	M12	160	35	33	48	35	13	36	23	13	13	90 - 99
ALC12	12	6	M12	180	35	33	51	35	16	40	24	16	13	90 - 99
ALC14	14	8	M12	230	40	36	57	39	18	45	27	18	13	90 - 99
ALC16	16	8	M12	230	40	36	57	39	18	45	27	18	13	90 - 99
ALC18	18	10	M12	260	44	42	60	40	20	49	29	20	13	90 - 99
ALC20	20	10	M12	280	47	44	65	44	21	54	33	21	13	90 - 99
ALC22	22	10	M16	330	53	50	68	42	26	58	32	26	17	175 - 192
ALC25	25	12	M16	390	56	52	75	45	30	63	33	30	17	175 - 192
ALC28	28	12	M20	420	66	62	90	60	30	75	45	30	22	355 - 405
ALC32	32	14	M20	480	73	68	91	60	31	77	46	31	22	355 - 405
ALC36	36	16	M20	540	79	73	99	64	35	85	50	35	22	355 - 405
ALC40	40	18	M20	580	79	73	103	67	36	85	49	36	22	355 - 405

Site Protection



Thickness	Size
1000 gauge	25m x 4m
1500 gauge	25m x 4m
2000 gauge	12.5m x 4m



Thickness	Size
7mm	75m x 1.5m



Thickness	Size
3mm	2m x 1m

Thickness	Size
3mm	2m x 1m

Polythene for Damp Proof Membranes

Supplied in four metre wide rolls (folded) for use as a damp proof membrane. Can be supplied to various Building Standards, e.g. PIFA or BBA.

Frost Insulation Blankets

Made of Closed Cell expanded Polyethylene Foam, with good thermal insulation properties, very low water absorption. Protects freshly poured concrete from the effects of freezing in winter or heat in summer.

Protection Board

Temporary Protection Board

Corrugated polypropylene sheet board. Ideal for use on new and refurbishment contacts. Lightweight and easy cut makes them the ideal board for temporary works.

Bitumen Protection Board

Ideal where the board is buried and for back filing onto. Rot-proof, robust board. Puncture resistant to reinforcement. Much stronger than temporary boards.



Concrete Repair & Protection

High Build Repair Mortars

Patching / Rapid Setting Mortars

Fairing Coats

Flowable Micro Concrete

Corrosion Inhibiting Impregnation

Embedded Galvanic Anodes

Steel Primers & Bonding Aids

Concrete Anti-Carbonation Coatings

Anti-Graffiti Coatings / Graffiti Removal

Epoxy Resin Repair Systems

Crack Injection & Resin Bonding

High Build Repair Mortars



Size

18kg

Primer: If Required - See data
842 - Concrete Substrate
841 - Steel Substrate

Size

25kg

Primer: If Required - See data
842 - Concrete Substrate
841 - Steel Substrate



Size

25kg

Primer:
610 - Concrete Substrate
610 - Steel Substrate



Size

18kg

Primer:
Concrete Substrate:
Nitobond HAR
Steel Substrate:
Nitoprime Zincrich

Size

25kg

Primer:
No primer required



BEFORE



AFTER



Size

25kg

Primer:
No primer required

Flexcrete Monolite

A low density, very high build, shrinkage compensated polymer modified mortar for the repair, rendering and profiling of vertical, horizontal and soffit surfaces. Ideal for applications of up to 100mm in vertical, horizontal and overhead situations. No inter-layer priming is required. Complies with **DTP Standard** (BD 27/86) Materials for the Repair of Concrete Highway Structures.

Yield: 16.7ltr = 1m² @ 16.7mm thickness

Flexcrete Monomix

A structural grade repair cement which is low density, high strength and shrinkage compensated for the repair, rendering and profiling of vertical, up to 80mm on horizontal and soffit surfaces. It is polymer modified and fibre reinforced repair mortar which produces a waterproof, dense matrix with excellent protection from impact and the ingress of acid gases and chlorides. Complies with **DTP Standard** (BD 27/86) Materials for the Repair of Concrete Highway Structures.

BBA, DWI, WRAS approved product.

Yield: 16.5ltrs = 1m² @ 16.5mm thickness

Sika Monotop 615

One component cement based polymer modified high build repair and reprofiling mortar, meeting the requirements of Class R3 of BS EN 1504-3. Ideal for use overhead and vertical repairs.

Yield: 15ltr = 1m² @ 15mm thickness

Fosroc Renderoc HB

For the reinstatement of large areas of concrete and for small, localised patch repairs. It is specifically designed for vertical and overhead high-build applications. The mortar is suitable where exceptional chloride and carbon dioxide resistance is required. Up to 80mm in one application on vertical surface and 50mm overhead.

Yield: 14.5ltr = 1m² @ 14.5mm thickness

Norsekem Matchpatch Grey & White

Pre-packaged, polymer modified repair cement for rapid structural repairs to in-situ and pre-cast concrete. Supplied in grey and white for on-site blending to provide a high quality aesthetic finish. It is also suitable for repairs to damaged, honeycombed or "boney" concrete in new build construction as no primer is required. Complies with **DTP Standard** BD27/86.

Yield: 12.5ltr = 1m² @ 12.5mm thickness

Flexcrete Fastfill

Rapid setting, Portland cement-based structural mortar for the durable repair of concrete which cannot be taken out of service for long periods, or in areas subjected to heavy wear such as roads, runways, bridges, decks, floors and footpaths. Sets in 10 minutes at 20°C yielding a durable, high strength mortar. Complies **DTP Standard** (BD 27/86) **BBA, WRAS** and **DWI** approved product.

Yield: 13.3ltr = 1m² @ 13.3mm thickness

High Build Repair Mortars

Parex Rapid Lightweight Repair Mortar

Lightweight Mortar Rapid is a fast setting high build, polymer and fibre modified, cementitious concrete repair system also capable of being applied as a fair faced finish in vertical and overhead situations. Can achieve 9N/mm² after 1 hour.

Yield: 13.5ltr = 1m² @ 13.5mm thickness

Parex Lightweight Mortar 14

A one pack, high build, polymer modified cementitious repair system, capable of being applied as a fair faced finish in vertical and overhead situations. Gives protection to exposed reinforcing steel preventing further deterioration. It is chloride free and can be safely used in contact with steel reinforcement. The placed mortar has good freeze-thaw stability and low absorption giving protection against atmospheric pollutants.

Yield: 15ltr = 1m² @ 15mm thickness

Parex Lightweight Mortar 18

A one pack, high build, polymer modified cementitious repair system, capable of being applied as a fair faced finish in vertical and overhead situations. Gives protection to exposed reinforcing steel preventing further deterioration. The use of lightweight fillers enable high build applications, with high quality finishes. Chloride free and can be safely used in contact with steel reinforcement. Good freeze-thaw stability

Yield: 16ltr = 1m² @ 16mm thickness

Ronacrete RonaBond HB40

Prepacked high build, high strength concrete repair mortars for repairing concrete and protecting reinforcing steel. They are used to repair concrete on vertical surfaces and are particularly suited to the repair of overhead concrete where ease of application is as important as high strength. They can be applied in thick-section layers up to 75mm on walls and soffits, without shuttering.

Yield: 13ltr = 1m² @ 13mm thickness

Size

18kg

Primer:
Acrylic Latex- Concrete
Parex Steel Primer - Rebar



Size

18kg

Primer:
Acrylic Latex- Concrete
Parex Steel Primer - Rebar



Size

25kg

Primer:
Acrylic Latex- Concrete
Parex Steel Primer - Rebar



Size

18kg

Primer:
RonaBond Primer- Concrete
RonaBond Primer - Rebar

Patching / Rapid Setting Mortars

Flexcrete Monomix

A structural grade repair cement which is low density, high strength and shrinkage compensated for the repair, rendering and profiling of vertical, horizontal and soffit surfaces. It is polymer modified and fibre reinforced repair mortar which produces a waterproof, dense matrix with excellent protection from impact and the ingress of acid gases and chlorides. Complies with **DTP Standard** (BD 27/86) Materials for the Repair of Concrete Highway Structures.

BBA, DWI, WRAS approved product.

Yield: 16.5ltrs = 1m² @ 16.5mm thickness

Fosroc Renderoc GP

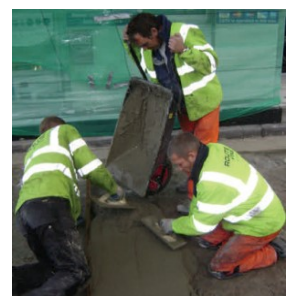
General purpose concrete reinstatement mortar which can be used as a render as well as for all types of patch repairs. Designed for vertical, overhead or horizontal use. It can be applied up to 20 mm thickness in sections overhead and 30 mm thickness in vertical sections.

Yield : 16 tr = 1m² @ 16mm thickness

Size

25kg

Primer: If Required - See data
842 - Concrete
841 - Rebar



Size

25kg

Primer:
Nitobond HAR - Concrete
Nitoprime Zincrich - Rebar



Patching / Rapid Setting Mortars



Pack Size
25kg

Size
25kg

Size
25kg

Size
25kg

Size
25kg

Size
25kg

Flexcrete Fastfill

Rapid setting, Portland cement-based structural mortar for the durable repair of concrete which cannot be taken out of service for long periods, or in areas subjected to heavy wear such as roads, runways, bridges, decks, floors and footpaths. Sets in 10 minutes at 20°C yielding a durable, high strength mortar. Complies **DTp Standard** (BD 27/86) **BBA**, **WRAS** and **DWI** approved product. Can be applied up to 50mm overhead, 100mm horizontal 300mm when bulked out with aggregate.

Yield: 13.3ltr = 1m² @ 13.3mm thickness

Flexcrete Monomix HD

A structural grade repair cement which is high strength and shrinkage compensated for the repair, rendering and profiling of vertical, horizontal and soffit surfaces. Requires only the addition of clean water to form a thixotropic mortar allowing easy high build trowel application, with no inter layer priming. Polymer modified and fibre reinforced which produces a waterproof, dense mortar. It is trafficable which makes it ideal for floor repairs. Complies with **DTp Standard** (BD 27/86)

Yield: 13.1ltr = 1m² @ 13.1mm thickness

Parex TecFast Concrete

Rapid setting, free-flowing concrete, for thick section placement, where high early strength gain is required. It can be placed at temperatures down to 5°C and allows road opening in one hour under normal conditions. Compliant with EN1504-3 3.2, 4.4, 7.1 and 7.2. TecFast Concrete also holds Highways Agency, Transport for London LUL and Link-Up Rail approval. Typical applications include the installation of road furniture, barriers and stanchion posts, back-filling manhole frames, recasting of pit-blocks and concrete elements. TecFast concrete can be placed in thicknesses of 20-650mm in a single pour and achieves a final compressive strength greater than 50N/mm²

Yield: 11.5 ltr = 1m² @ 11.5mm thickness

Sika Rapid Repair Mortar

Fast setting cementitious repair mortar idea for floor slabs where an early high strength repair is required. Also suitable for bedding of manhole covers.

Yield: 11.9 ltr = 1m² @ 11.9mm thickness

FEBSET 45

Specially formulated repair mortar, based on magnesia-phosphate pre-mixed with selected aggregates, which gives controlled, extremely high early strengths in temperatures ranging from -20°C (or lower) up to over 30°. Ideal for freezer room and temperature controlled areas.

Yield: 11.6 ltr = 1m² @ 11.6mm thickness

C40 Concrete Mix

C40 concrete complies with BS5838 : Part 1 : 1980 and is formulated to produce good quality concrete for applications where a higher strength is required. 40N/28 days.

Yield: 11ltr = 1m² @ 11mm thickness - (56 x 25kg bags per pallet)

Patching / Rapid Setting Mortars

Parex Speedcrete S Acrylic

A fine, quick setting, rapid hardening concrete incorporating ASR resistant 6mm aggregate and a dispersible acrylic polymer powder. Strength gain of 25N/mm² in 2 hours. Mixed consistency of "mobile concrete" suitable for downward facing holes, in concrete roads, runways, bridge decks etc. Complies with **DTp Standard** (BD 27/86) LUL approved product.

Yield: 12ltrs = 1m² @ 12mm thickness

Pack Size
25kg

PAREX®

Norsekem Fastplug

A fast setting, shrinkage compensated structural grade repair cement. It is waterproof, slump free, and has exceptional compressive and adhesion strengths making it suitable for use in vertical, overhead and other difficult areas of repair without the use of primer, special lightweight aggregates or support. Compatible with **Matchpatch** for finishing. Complies with clause 6 of **DTp Standard** (BD 27/86) Materials for the Repair of Concrete Highway Structures.

Yield :- 12.5 ltrs

Pack Size
25kg



Norsekem Matchpatch Grey & White

A fast setting structural grade repair cement Colour matching for a fair faced finish is easily achieved by mixing shades of grey and white at different ratios using trial mixes. It is waterproof and with characteristics of low slump, superior adhesion and high build, it can be used in vertical, overhead and other difficult areas of repair without the use of primer. Complies with clause 6 of **DTp Standard** (BD 27/86) Materials for the Repair of Concrete Highway Structures.

Yield: 12.5ltrs = 1m² @ 12.5mm thickness

Pack Size
25kg



Fairing Coats

Flexcrete Monolevel FC

An engineering quality fairing coat for filling minor blow holes and defects, and repairing surface imperfections up to 6mm to provide an even surface for applying membranes and coatings such as Flexcrete 851. It is shrinkage compensated and provides good protection to acid gases, moisture, chlorides and freeze / thaw cycles. Can be applied vertically or horizontally by brush or trowel.

Yield: 15.5 ltrs = 7.75m² @ 2mm thickness

Pack Size
25kg



Sika Monotop 620

Cementitious polymer modified fairing coat for the repair of minor defects, honeycombed concrete and repairing pores. Exterior and interior use. Can be applied from 1.5mm - 5mm. Fully compatible with the Sika repair range of products.

Yield: 12.5ltr = 12.5m² @ 1mm thickness

Pack Size
25kg



Fosroc Renderoc FC

Designed for application in thin layers to produce a fair-faced appearance to concrete surfaces or masonry surfaces in readiness to receive a protective/ decorative coating. Surface imperfections up to 3 mm in depth can be filled with the scrape-coat application.

Yield: 15ltr = 10m² @ 1.5mm thickness

Pack Size
25kg



Fairing Coats



Pack Size

25kg

Flexcrete Monolevel RM

A pre-blended fair faced render mortar with enhanced polymer properties allowing easy high build trowel application. Provides good protection to acid gases, moisture, chlorides along with good impact resistance due to its fibre reinforcement. Particularly suitable for levelling exposed aggregate panels that are no longer wanted.

Yield: 14.5ltrs = 2.4m² @ 6mm thickness

Pack Size

25kg

Flexcrete Monolevel 844SP

A single component, thixotropic, polymer modified, cementitious repair mortar with high adhesive properties, allowing it to be used as a waterproof screed and anti-carbonation coating, as well as a filler for blowholes and repair of small cavities and honeycombed concrete. Can be used in vertical and horizontal situations. This product also re-instates cover. 1mm of 844SP is equal to 1000mm of concrete cover. (water permeability coefficient)

WRAS, DWI approved.

Yield: 15ltrs = 15m² @ 1mm thickness



Pack Size

25kg

Ronacrete RonaBond EasySkim FC

Pre-packed fairing coat mortar which is applied as a skim coat in thicknesses up to 3mm to provide a smooth, hard finish to damaged, blemished and repaired concrete surfaces. RonaBond EasySkim FC is used as a levelling mortar prior to the application of protective coatings or paints. The material is supplied in pre-blended form.

Yield: 13ltrs = 6m² @ 2mm thickness

Pack Size

20kg

Parex SkimCoat Plus

A single component Portland cement based powder mix which is polymer modified to form a fine textured fairing coat. Gives a fair face finish that acts as a protective over coating. Additional protective or decorative coatings may be applied to the hardened fairing coat.

Yield: 14ltrs = 7m² @ 2mm thickness



Pack Size

25kg Grey

25kg White

Norsekem FILL 'n' RUB "White & Grey"

A fine grade polymer modified cement provides a convenient method of filling blowholes and small surface defects in precast or insitu cast concretes, as well as providing an even standardised colour and aesthetic finish. Available in Grey and White versions to enable colour matching with the parent concrete. Best described as "engineering polyfilla" and ideal for bag rubbing techniques. Complies with Clause 6 of the **DTp Standard BD 27/86**

Yield: (Grey) 14ltrs = 10m² @ 1.4mm thickness

(White) 15.9ltr = 10m² @ 1.6mm thickness

Pack Size

25kg

Flexcrete Monolevel 250F

A single component, polymer modified cementitious mortar for the filling of blow holes, cracks, mapping defects, blemishes and levelling out uneven surfaces in existing paint finishes as well as concrete and mosaic substrates prior to application of subsequent protective coatings and paint finishes.

Yield : 16.2 ltrs

Flowable Micro Concrete

Parex LA Repair Concrete

Low-alkali micro concrete which is self-compacting, non-shrink and suitable for pouring or pumping. It is designed for use on bridges or soffits and is suitable for cathodic protection projects. The material conforms to; EN1504-3 repair principles 3.2, 4.4, 7.1, 7.2, **DTP approved** BD27/86 Clause 4 and "Specification for Highways Works" Clause 1704.6.

Yield: 12.5ltrs = 1m² @ 12.5mm thickness

Pack Size

25kg

PAREX®

Sika Armorex Armocrete

Free flowing micro concrete for large shuttered repairs to structural concrete. Can also be used for thick section grout and void filling.

Yield: 12ltrs = 1m² @ 12mm thickness

Pack Size

25kg



Fosroc Renderoc LA / LA55

The highly fluid nature of Renderoc LA systems obviates the need for compaction and vibration even where access to the repair zone is restricted or where reinforcement is congested. **DTP approved** BD27/86 clause 4.

Yield: 12ltrs = 1m² @ 12mm thickness

Pack Size

25kg



Corrosion Inhibiting Impregnation

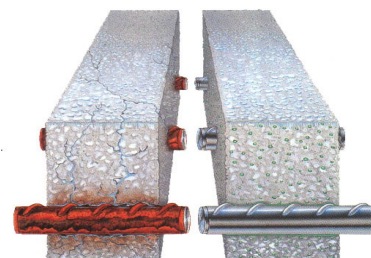
Flexcrete Cemprotec MCI® 2020

A clear patented, water based, organic surface treatment for existing concrete structures. Based on time proven corrosion inhibiting technology. Designed to migrate through concrete to the steel reinforcement forming a monomolecular layer which helps reduce corrosion. Ideal for use in aggressive environments such as marine and highway structures.

Coverage: 3.68m²/ltr

Pack Size

25ltr



Sika FerroGard 903

Corrosion inhibiting complex designed for impregnation of reinforced concrete. It penetrates to form a thick monomolecular chemical protective film on the reinforcement surface. and delays the start of corrosion and reduces corrosion rates. This increased corrosion protection significantly increases the service and maintenance life cycle of structures by 15 years when used as part of a Sika repair system.

Coverage: 0.5m²/kg

Pack Size

25kg

220kg



Embedded Galvanic Anodes For Corrosion Protection

Sika® Galvashield® XP/XPT/XP2/XP4

Embedded galvanic anodes are used in concrete rehabilitation to prevent the formation of new corrosion sites adjacent to completed patch repairs. Sika® Galvashield® XP/XPT/XP2/XP4 anodes consist of a sacrificial zinc core that is activated by the surrounding specially formulated cementitious mortar. The anode is quickly and easily fastened to the exposed reinforcing steel. Once installed, the zinc core corrodes preferentially to the surrounding rebar, thereby providing galvanic corrosion prevention to the adjacent reinforcing steel and mitigating 'Incipient Anode' formation.



Product	Pack Size
XP	20no. / Box
XP2	20no. / Box
XP4	20no. / Box
XPT	30no. / Box



Steel Primers & Bonding Coats



Pack Size
5kg

Flexcrete Steel Reinforcement Protector 841

Primarily used on old structures prior to the application of the relevant repair mortar. It forms a hard, highly alkaline, flexible coating with excellent protection from acid gases, moisture, chlorides and will passivate the steel chemically to prevent further rust formation. Brush applied.

BBA and DWI approved product.

Coverage: 5kg in two coats will cover approx. 45 linear metres of 10mm steel bar.



Pack Size
4kg

Flexcrete Bonding Bridge 842

Designed to enhance the bond between high porosity concrete and the repair mortar or other cement based materials. It prevents rapid drying of the mortar at the repair/concrete interface which could otherwise affect the bond integrity. Brush applied.

BBA certified product.

Coverage: 16m²



Pack Size
5kg

Parex Steel Primer

An anti-corrosion primer incorporating an advanced corrosion inhibitor designed to coat and protect exposed steel reinforcement. It is brush-applied and has a working life of 30 minutes when applied at ambient temperatures of 20°C

Coverage: 1.5kg / m² @ 1mm

Pack Size
25kg

Sika Monotop 610

Single part steel primer and concrete bonding aid prior to the application of Sika Mototop system.

Coverage: 2kg / m²



Pack Size
800ml
1.9ltr

Fosroc Concrete Repair System Primers

Nitoprime Zincrich is a one part brush applied steel reinforcement coating prior to the application of Renderoc Concrete Repair systems.

Coverage: 8m² / ltr

Pack Size
AR - 5ltr
HAR - 5ltr

Nitobond AR & HAR are liquid applied primers and curing agents for use in conjunction with the use of Renderoc Concrete Repair systems. See data for application rates.

Pack Size
2kg
10kg

Ronabond Primer

Concrete and steel reinforcement primer, brush applied to promote adhesion prior to repairs.

Coverage: 1.5kg / m²



Pack Size
5ltr
25ltr

SBR Liquid

When mixed with OPC to a slurry like consistency acts as a cost effective bonding aid for new to old concrete, floor screeds and renders.

Coverage: 1:1 mix / 1kg OPC - 1ltr SBR = 3-4m²

Pack Size
0.8kg
4kg

Parex Bondcoat UF

Two part epoxy adhesive suitable for bonding new to old, brick slips and areas where a strong bond is required. Ideal for bonding of per-cast units.

Coverage: Refer to data

Concrete Anti-Carbonation Coatings

Flexcrete Monodex Ultra

One component, decorative coating which offers an economic solution for the protection of buildings and other structures with a service life up to 10 years. To inhibit the growth of mould and lichen, it contains an active biocide which is retained in-film. Elastomeric properties permit substrate movement and bridging of hairline cracks. Technically advanced, minimal VOC, water-based decorative coating which protects against carbonation and water ingress without entrapping moisture.

Coverage: 15ltr = 75m² per coat

Flexcrete Monodex Smooth

Single component, high build, decorative, waterproof coating based on an advanced micropolymer resin binder which cross-links to give outstanding durability over a service life up to 15 years. The elastomeric nature facilitates substrate movement and bridging of hairline cracks.

Coverage: 15ltr = 75m² per coat

Flexcrete Monodex Clear

Transparent, weather resistant, elastomeric waterborne coating for use where it is important to maintain the surface appearance of the concrete substrate, whilst still providing excellent anti-carbonation and weatherproof protection. Water-based, virtually odourless coating with minimal VOC content. Equipment easily cleaned with water and no flash point.

Coverage: 0.2ltr / m² / per coat

Flexcrete Monodex Textured

Highly engineered, waterborne, acrylic based textured coating. It waterproofs surfaces for at least 10 years, yet allows high levels of entrapped substrate moisture to escape without causing blistering or delamination. It also incorporates an advanced in-film, non-leaching biocide, inhibiting the growth of mould and algae for many years. Able to hide surface defects, scars, wall repairs and alterations, vastly improving the aesthetics of buildings.

Coverage: 2m² / ltr / per coat

Flexcrete Bond-Prime

Single component, water based, epoxy modified polymeric primer for sealing and stabilising substrates prior to the application of the specialist decorative and protective membranes in the Flexcrete range.

Coverage: 5m² / ltr

Sikagard®-675 W ElastoColor

One part, plasto-elastic water dispersed coating based on styrene acrylate dispersion for the protection and enhancement of fairfaced concrete. Environmentally friendly and easy to apply.

Coverage: 0.2 - 0.25kg / m² / coat

Sikagard®-550 W Elastic

One part, plasto-elastic coating based on UV-curing acrylic dispersion with excellent crack-bridging properties even at temperatures below 0°C.

Coverage: 0.25 - 0.35kg / m² / coat

Pack Size

15ltr



Pack Size

15ltr



Pack Size

15ltr



Pack Size

15ltr



Pack Size

5ltr

25ltr



Pack Size

15ltr

Primer:
Sikagard 552w
Sikagard 551 s

Pack Size

15ltr

Primer:
Sikagard 552w
Sikagard 551 s



Anti-Graffiti Coatings



Size

15 ltr

25 ltr

Tensid AGS Graffi Coat 1

One part anti-graffiti coating which can be used on all outdoor masonry surfaces where a sacrificial invisible protection (up to 10 years) is required. Graffi Coat 1 is a permeable (allows the surfaces to breathe) and fully reversible water based crystalline micro wax coating suitable for all masonry surfaces and most porous surfaces. Graffi Coat 1 helps prevent penetration of atmospheric pollutants into the substrate and eases subsequent cleaning.

Coverage: Refer to data

Tensid AGS Graffi Coat 101

Waterborne high performance, 2 pack polyurethane permanent coating available in clear gloss. It is also available in most British Standard colours. Suitable for application to most surfaces which are normally painted such as wood, metal, plaster, concrete and previously painted surfaces. Not recommended on brick or natural stone if permeability is of importance.

Coverage: Refer to data



Size

4kg+1kg Act

Tensid AGS Graffi Coat 102

One component, moisture cured polyurethane coating. This high performance, solvent free coating provides a clear matt and hard scratch resistant finish, with high resistance to chemicals and graffiti. Graffi Coat 102 can also be used as a hygiene coating, and as a general protective coating suitable for most substrates. Graffi Coat 102 is also suitable for application to brickwork and concrete, but must first be primed with Graffi Prime 102.

Coverage: Refer to data



Size

4kg+1kg Act

Tensid AGS Graffi Coat 103

High solids, and high performance non sacrificial polysiloxane anti graffiti coating, available in clear gloss also in most British Standard, RAL and NCS colours. Suitable for application to most non absorbent surfaces which are normally painted such as wood, metal, plaster and concrete. Not recommended on brick or natural stone if permeability is of importance.

Coverage: Refer to data

Graffiti Removers



Size

4 x 5 ltr

Tensid GRAFFI GREEN Multi-purpose

A liquid graffiti remover for hard surfaces. GRAFFI GREEN removes most types of graffiti made with felt pen and spray paint. It is ideal for use on most hard non porous surfaces and can also be used on other non-absorbent surfaces. Safe for use on polycarbonate.

Usage: 3– 10m² / ltr



Size

4 x 5 ltr

Tensid GRAFFI CLEAN 300 graffiti remover.

Get graffiti off masonry! NMP-free viscous graffiti remover/paint stripper for use on masonry surfaces. It is a gelled graffiti remover that will cling to the surface while it works to remove graffiti.

Usage: 2 - 6m² / ltr

Epoxy Resin Repair Systems

Parex Epoxy Mortar E

Three part epoxy mortar ideal for use where high strength, high abrasion and chemical resistant repair are required. Ideal for warehouses, loading bays, car park decks and repairs of steps.
Yield: 16kg - 8ltrs = 1m² @ 8mm thickness
28.5kg - 14.25ltrs = 1m² @ 14.22mm

Size
16kg
28.5kg



Norsekem Epoxy Mortar

High strength, chemical resistant, self-priming, resin rich epoxy repair mortar for economic repair to spalled concrete, car park decks and ramps and areas that are subject to high levels of traffic.
Yield: 9ltr = 1m² @ 9mm thickness

Size
20kg



Sikadur®41 CF

Thixotropic, three part patching and repair mortar, based on a combination of epoxy resins and special fillers, designed for use at temperatures between +10°C and +30°C. Ideal for vertical and overhead use or as an abrasion and impact resistant wearing course. Available in Normal and Rapid set Grade.
Yield: 2kg / m² per mm

Size
10kg



FEB Febox NF

Non slump epoxy resin bedding compound. It is a two component, fine aggregate filled, fast curing material, ideal for a variety of bedding, gap filling and concrete repair applications.
Yield: 1.66ltr / 3kg

Size
2 x 3kg
10kg



Sikadur 31

Solvent-free, moisture tolerant, thixotropic, structural two part adhesive and repair mortar, based on epoxy resins and special fillers, Bonds to almost any surface. Normal and rapid set grades available.
Yield: 6kg = 3.16ltrs / 1.2kg = .63ltr

Size
1.2kg
6kg



Standard Epoxy primer / Bonding aid

Two part, general purpose epoxy bonding aid for screeds and high impact areas of repair. Will also assist with stopping gassing from general repairs.
Coverage: Refer to data

Size
2.5kg
5kg



Fosroc Nitomortar S & HB

For the fast and permanent reinstatement of concrete, particularly where high strength, abrasion-resistance and resistance to chemicals is required. These products are designed for horizontal vertical use, although generally applied in thinner sections.
Yield: 8ltr = 1m² @ 8mm thickness Nitomortar S
4ltr = 1m² @ 4mm thickness Nitomortar HB

Size
16kg - S
8kg - HB



Parex Epoxy Adhesive 305

Two part epoxy adhesive suitable for bonding new to old, brick slips and areas where a strong bond is required. Ideal for bonding of per-cast units.
Yield: 1.5kg = 1ltr - 4kg = 3ltr

Size
1.5kg
4kg



Crack Injection & Resin Bonding

PAREX®



PAREX®



Size
Std = 1.13kg
Std = 6.88kg
Thixo = 1.19kg

Size
10 x 1kg

Size
1.2kg Normal
6kg Normal
1.2kg Rapid
6kg Rapid

Size
380ml

Size
LV Kit = 3ltr
TH Kit = 3ltr

Size
1.9kg

Parex Epoxy Injection Resin/ Thixotropic Injection Resin

A two part, volume stable, very low viscosity, high strength epoxy resin grout. The thixotropic version will remain in place without use of a totally grout tight shutter. Used for free flow or crack injection of voids from 0.1mm to 10mm in concrete and for rebonding lifted floor toppings. Can also be used for under plate grouting of thin sections where a cementitious grout can not be used. Typical strengths are 90N/mm² at 24hrs and 105N/mm² at 7 days.

Yield: 5.62 ltrs, 1.0 ltr

Sikadur 52

Two component solvent free, low viscosity, epoxy resin specifically formulated for crack injection work. Also suitable for floor screed stabilisation / bonding. Excellent bond to damp or dry concrete, timber, and masonry substrates. For cracks from 0.2mm - 5mm

Yield : 1 ltr

Sikadur CF & Rapid Grade

Solvent-free, moisture tolerant, thixotropic, structural injection resin. Bonds to almost any surface. Normal and rapid set grades available. Ideal for cracks from 10mm - 15mm

Coverage: 2kg / m² / mm

Norsekem BarFast - Injection Resin

Thixotropic resin designed for anchoring of studs / bars and other fixings in to concrete, masonry and blockwork. Can also be used as an injection resin for cracks from 2mm - 20mm. Mix in the nozzle technology. Ready to use.

Yield: 380ml

Fosroc Nitokit TH & LV

Basic pack incorporates a two-part epoxy crack injection resin contained in a patented single cartridge, complete with injection nipples and hoses. A selection of either Nitokit LV, a low viscosity system or Nitokit TH, a thixotropic system, ensures the most cost effective and efficient solution.

Coverage: Refer to data

Parex Epoxy Thixotropic Crack Bonder (ETCB)

Specially developed for filling and bonding of cracked concrete and brick work. An ideal product for brick bonding after underpinning has taken place or securing of remedial wall ties. Consists of a three part epoxy resin system consisting of a thixotropic epoxy resin base, a low viscosity hardener and a synergistic blend of fillers. Filling of gap dimensions 1mm to 40mm may be achieved without the use of grout tight shuttering. The product is non shrink enabling complete fill of the void.

Yield: 1 ltrs

Crack Injection Ancillaries

The following ancillaries will be needed along with most Epoxy Injection Grout / Thixotropic Injection Grout Resin to facilitate a proper and effective repair of cracked concrete .

- 330ml Cartridges empty
- HD Skeleton Gun
- Tube, clip and clamp
- Metal Flange Nipples
- PU Tubing for Metal Nipple



Waterproofing Systems

Liquid Applied Waterproofing Membranes

Sheet Membranes

Drainage Sheet Membranes

Active Waterstops

PVC Waterstops

Injectable Waterstops

Cementitious Waterproofing

Crack & Joint Waterproofing

DPC Injection

Waterplugs

Liquid Applied Waterproof Membranes



RIW

Size
4 x 5ltr
25ltr
205ltr

RIW LAC

Typically used as a damp proof membrane to ground floors, as a vapour barrier behind cladding and for tanking of basements. It is also suitable for waterproofing foundation walls, ducts, lintels, columns, beams and similar structures at, above and below ground level. May also be applied to the internal face of external walls above ground level to prevent the penetration of moisture. The membrane can then be plastered or dry lined when dry.
Coverage: 2m² / ltr / coat



RIW

Size
5ltr
20ltr

RIW Toughseal

Typically used to provide a water and water vapour proof barrier, or to give protection against abrasion, fresh and salt water, carbon dioxide, alkalis and dilute mineral acids. It is resistant to U.V. light and atmospheric attack. Suitable for raised access floors, ground floor slabs, swimming pool wet areas and shower areas, plant rooms, sewage plants and marine applications. When dressed with a suitable aggregate it will provide a slip retardant wearing surface or a waterproof key for tile bedding or renders.
Coverage: 4m² / ltr / coat



RIW

Size
6kg / Flexiseal
25kg / Flexiseal
5ltr / Flexiseal Primer
20ltr / Flexiseal Primer

RIW Flexiseal

Used in all situations where a high performance tanking or damp proof membrane is required. Suitable substrates include concrete, masonry, steel, asbestos cement, timber, sprayed polyurethane foams and expanded polystyrene such as ICF systems. *Flexiseal primer* is used to seal porous or contaminated surfaces, and to aid adhesion of the membrane.
Coverage: 2m² / ltr / coat
Primer Coverage : 8m² / ltr



RIW

Size
20ltr

RIW Heviseal

Protective coating to concrete or steel superstructures or other structures such as retaining walls, plinths etc., when the membrane is to be left exposed for a long period of time prior to cladding. Heviseal is suitable as a waterproof membrane, for periodic maintenance onto existing flat roof areas. The membrane can also be used on parapet walls, gutters, planters, ponds and water storage tanks
Coverage: 1.5m² / ltr / coat



RIW

Size
20ltr

RIW Liquid GM

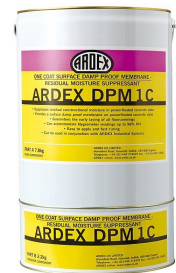
Single component water based compound, formulated on styrene-butadiene co-polymer. Liquid GM is an elastomeric rubber like coating, which cures to form a tough, flexible material; acting as an effective barrier to the passage of Methane, Carbon Dioxide, Radon and other harmful gases. Liquid GM is a specially designed gas protection membrane, developed to provide high performance gas proofing and a barrier to water and water vapour.
Coverage: 0.5 - 0.7m² / ltr / coat

Liquid Applied Waterproofing Membranes

ARDEX DPM 1C / Rapid

Specifically developed to provide either a DPM, or to suppress residual moisture in concrete slabs and cement/sand screeds which are well compacted and sound, where readings of up to 98% RH are measured. Can be used as a damp proof membrane that deals with damp concrete where a structural damp proof membrane is not present or is ineffective, with the risk of rising damp. Rapid Drying version also available for fast track work.
Coverage: Up to 2.5m² / kg

Product	Size
Ardex DPM 1C	6kg
Ardex DPM 1C	10kg
Ardex DPM 1C	25kg
Ardex Rapid DPM	3kg
Ardex Rapid DPM	6kg
Ardex Rapid DPM	10kg



Sika Black Bitumen Paint

General purpose black bitumen paint that can be applied to most substrates, including iron and steel structures, metal fabrications, castings, asbestos cement sheeting, and structural concrete.
Coverage: >5m² / ltr / coat

Size
4 x 5ltr
25ltr



Fosroc Proofex LM

Two component bituminous liquid membrane for waterproofing of underground structures and intricate details. Resists hydrostatic head of up to 70 meters.
Coverage: 4 - 8kg / m²

Size
28kg



Grace Bituthene LM

Two part, elastomeric liquid applied detailing compound. Ideal for use around irregular profiles where liquid applied waterproofing is necessary to ensure watertight continuity.
Coverage: 2.28m² @ 2.5mm thickness

Size
5.7ltr



Black Jack 908 DPM

Rubber/ bitumen damp proof liquid membrane with excellent adhesion which dries to a tough black seamless, flexible waterproof and vapour proof membrane. Ideal for damp proofing floors and walls, even externally below ground level.
Coverage: 2m² / ltr / coat

Size
4 x 5ltr
25ltr



ARDEX WPM 200

Developed to provide a water and water vapour barrier, or priming layer to concrete, screeded, rendered or masonry surfaces, steel and other vertical as well as horizontal hard surfaces. Ideal for use on raised access floors, ground floor slabs, swimming pool surrounds and shower areas, plant rooms, sewage plants and marine applications. When dressed with a suitable aggregate it will provide a reduced slip wearing surface for pedestrian traffic.
Coverage: 4.8m² / ltr / coat

Size
5ltr
20ltr



Sheet Membranes



Product	Size
SikaProof A-08	1 & 2m x 25m
SikaProof A-12	1 & 2m x 25m

SikaProof® A-08 / A-12

Fully and permanently bonded, self-adhesive, composite sheet membrane waterproofing system for reinforced concrete of the main structure. SikaProof® A-08/-12 is cold applied and pre-applied, before the steel reinforcement is fixed and the concrete is poured. Two Grades Available.



Product	Size
A-08 Edge	1m x 25m
A-12 Edge	1m x 20m

SikaProof® A-08 / A-12 Edge

L Shaped 200mm x 800mm cold applied, self adhesive composite sheet membrane waterproofing system. For easy application of perimeter edges, corners and connection. Cold applied system. Two grades available.

Product	Size
Sika Patch 200B	200mm x 20m
Sika FixTape 50	50mm x 20m
Sika MetalSheet	20m

SikaProof® Ancillary Products

SikaProof® Patch 200B - External membrane patching tape for sealing any local damage or penetrations.

SikaProof® FixTape 50 - For fixing and repairing around details and penetrations.

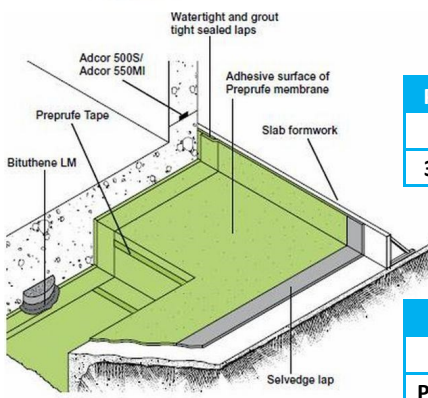
SikaProof® MetalSheet - To Create special details, such as pile heads.



Product	Size
160R	1.2m x 35m
160Plus	1.17m x 31m

Preprufe 160R / 160 Plus

Pre-applied waterproofing membrane, used typically with concrete slab sections up to 350mm thickness and vertically with single and double sided formwork systems. Methane, carbon dioxide and radon gas resistant. BBA Certified.



Product	Size
300R	1.2m x 30m
300Plus	1.17m x 31m

Preprufe 300R / 300 Plus

Pre-applied waterproofing membrane, used typically with concrete slab sections up to 350mm thickness horizontally, Methane, carbon dioxide and radon gas resistant. BBA Certified. This material has superior damage resistance to on site metalwork and site plant.

Product	Size
800PA	1.2m 35m
PRIMER W2	5ltr
Primer SC1	20ltr

Preprufe 800PA

Cold applied, self adhesive membrane that can be applied to cementitious and metal substrates. Ideal for new build base-ment walls, below ground car parks, underground RC reservoirs and tanks. Offers protection against radon and methane gas.



Product	Size
PrePrufe Tape LT	100mm x 15m
Bituthene LM	5.7ltr
Lap Roller	Each

Preprufe Ancillary Products

Preprufe Tape - Flexible, jointing tape on overlaps.

Bituthene LM - used as a detailing liquid membrane around penetrations and corner transitions.

Bituthene Lap Roller - Lap roller for smoothing out overlaps and jointing.

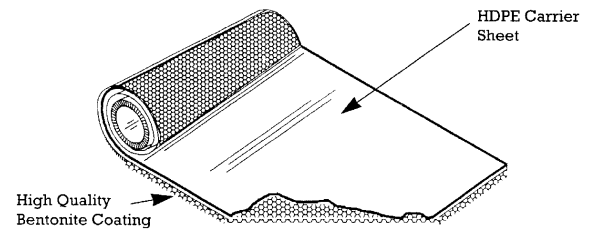


Dual Seal Bentonite/HDPE Membrane

Dual Seal is a high performance self swelling, self healing waterproofing membrane comprising of a thick, high density polyethylene sheet laminated to 4kg/m² of quality Bentonite granules. It has many advantages over traditional Bitumen membranes.

- Resistant to 46m head of water pressure
- Prevents water tracking between membrane and concrete
- Can be applied to wet/green concrete
- Non-skilled installation
- Can be installed in damp conditions
- Surface does not require priming
- No protection boards needed

Product	Size
Dual Seal	1.22m 7.32m

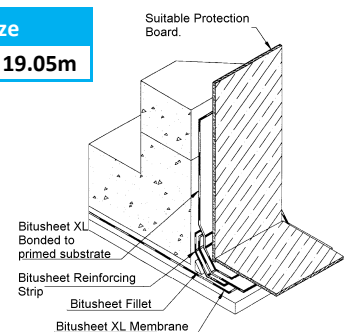


SCP Bitusheet XL Self Bonding Waterproof Membrane

A self bonding polymer modified bitumen which is covered on one side by a two ply cross laminated polythene film and on the other by a release sheet which is removed prior to bonding the sheet to a suitably prepared substrate. The membrane is easily applied by roller pressure and incorporates a 50mm seldedge on one side to form homogenous overlap joints. Suitable for vertical & horizontal damp proof tanking below ground structures, subways, and retaining walls.

BBA Certified.

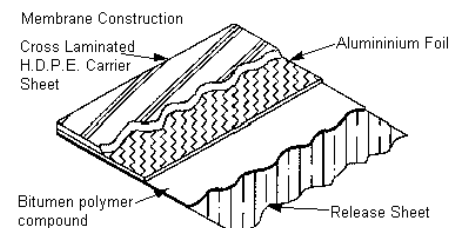
Product	Size
Bitusheet XL	1.05m x 19.05m



SCP Bitusheet Gas Barrier Membrane

A high density polyethylene sheeting laminated to aluminium foil and coated with a self adhesive bitumen/polymer compound. Designed for use as a cold applied flexible membrane to provide a barrier to Methane and Radon gases. The membrane incorporates a 50mm seldedge on one side to form homogenous overlap joints. May be laid onto concrete blinding or directly onto compacted sand blinding with the longitudinal and end overlaps sealed.

Product	Size
SCP Gas Barrier	1.05m x 28.6m



Ancillary Membrane Products

SCP Bitusheet Primer

One part solvented bituminous solution for brush or spray application. Seals porous surfaces to promote adhesion of Bitusheet membranes and flashings. Allow to dry (½ to 2 hours) before applying membrane. Coverage :- 5-7m² per litre.

Product	Size
Bitusheet Primer	5ltr

SCP Bituflex Fillet

A preformed triangular foam section. Used at angles between walls and slabs, fixed with Bitumen Mastic and then covered with 300mm reinforcing strip.

Size :- 48mm x 48mm in 1 metre lengths.

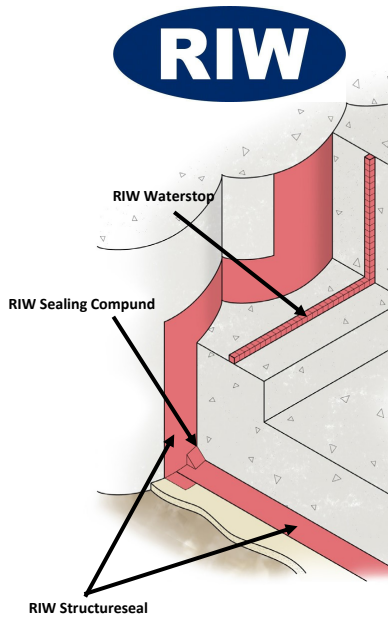
Product	Size
Bituflex Fillet	1mtr

SCP Bitusheet Reinforcing Tape & Double Sided Tape

A cross laminated high density polyethylene film coated with Bitumen Polymer Adhesive and faced with a release sheet. Used to reinforce all external and internal edges, intersections and roof expansion joints. Double sided for fixing protection boards.

Product	Size
Bitusheet R.Tape	150mm x 20mtr
Bitusheet R.Tape	300mm x 20mtr
Double S/Tape	100mm x 10mtr

Sheet Membranes



Size
5m x 1.1m Roll

Product	Size
RIW Waterstop	6 x 5m rolls
S / Compound	25kg
RIW Granules	20kg
RIW Washers	500pp
RIW Staple Gun	Each
RIW Staples	2500pp

RIW Structureseal

Designed for below ground vertical and horizontal structural foundation surfaces. Typical applications, include backfilled concrete walls, structural slabs and boundary line construction. Boundary line construction applications, include secant and contiguous piling, skin wall, metal sheet piling, sprayed concrete finishes and stabilized earth retention walls. **BBA Certified.**

RIW Structureseal Ancillary Products

RIW Waterstop - a flexible, expanding bentonite - based waterstop, for use in non - moving concrete construction joints.

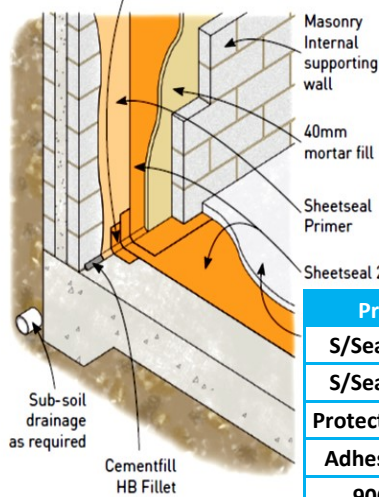
RIW Sealing Compound - used as a detailing mastic around penetrations and corner transitions.

RIW Granules - chemically treated sodium bentonite granules, which swell upon contact with water.

RIW Washers - a 'soft-washer' fastener, for securing the RIW Structureseal to concrete.

RIW Staple Gun - a manual stapler

Sheetseal 226 reinforcing strip x 300 wide



Size
19.05 x 1.05m

Product	Size
S/Seal Primer	5ltr
S/Seal Primer	25ltr
Protection Board	.9m x 2.02m
Adhesive Tape	150mm x15m
9000DPC	Various

RIW Sheetseal 226

Cold applied, high density polyethylene film, coated with a bitumen / rubber self adhesive layer. Typically used to provide a water and water vapour barrier in all forms of construction, particularly where large unobstructed areas are to be treated. Typical installations include ground floor waterproofing, retaining walls and similar uncluttered surfaces. **BBA Certified**

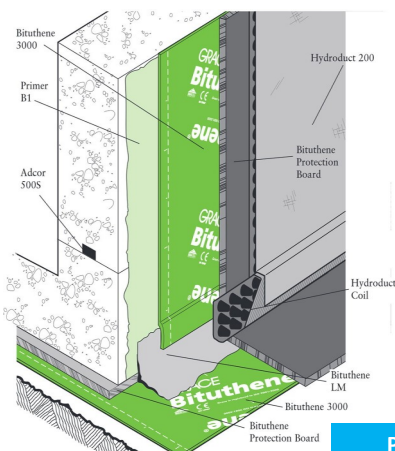
RIW Sheetseal 226 Ancillary Products

RIW Sheetseal Primer - Primer to promote adhesion

RIW Protection Board - 3mm bitumen impregnated protection board.

RIW Adhesive Tape - 150mm wide double sided tape

RIW Sheetseal 9000 DPC - Range of high performance polymeric dpc's, and pre-formed cavity trays.



Size
20m x 1m roll

Size
20m x 1m roll

Product	Size
B1 Primer	5ltr & 25ltr
S2 Primer	5 & 20ltr
Protection Board	2m x 1m
Bituthene LM	5.7ltr

Bituthene 3000

Self-adhesive membrane suitable for waterproofing basements and substructures. Capable of resisting a hydrostatic head when fully supported. Cold applied, flexible, preformed waterproof membrane. **BBA Certified.**

Bituthene 8000

Advanced, self-adhesive water and vapour proof membrane for sub-structures. Gas resistant to methane, carbon dioxide and radon gasses. Fast and easy application. **BBA Certified.**

Bituthene Ancillary Products

B1 Primer - Primer to promote adhesion (use with 3000)

S2 Primer - Primer to promote adhesion (use with 8000)

Protection Board - 3mm bitumen impregnated protection board.

Bituthene LM - Used for detailing works



Drainage Sheet Membranes

Plaster Base

Can be installed on internal walls and vaulted ceilings above or below ground level. The substrate remains visible through the clear membrane for precise fixing. It is suitable for use with sand and cement renders and most lightweight and renovating plasters. Plasterboard can be fixed directly to the membrane using the 'Dot and Dab' method.

Size
2m x 20m

Plaster Mesh

Double layered cavity drain membrane comprising a studded HDPE layer bonded to a HDPE twist mesh layer which forms a key for most common plasters and renders. Plasterboard can be fixed directly to the membrane using the "dot and dab" method. Plaster Mesh can be fixed directly to existing wall finishes without the need for extensive hacking off or preparation.

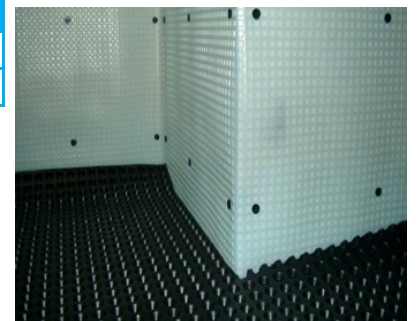
Size
2m x 20m



P5 & P8 Cavity Drain

(HDPE) cavity drain membrane which is impermeable and resistant to the usual chemicals in building construction. Tough but pliable and can be bent around corners and projections without the risk of breaking even in very low temperatures.

Product	Size
P5	2.07 x 20m
P8	2 x 20mtr



P20 Cavity Drain

High Capacity drainage membrane recommended for use on all floor applications below ground due to its ability to control free flowing water. The deep stud profile is designed to resist blockages caused by lime stone deposits. Suitable for use as a radon barrier.

Size
2m x 20mtr

Double Drain

Double Drain can be fixed vertically or horizontally to suit the application. It must be installed over a primary membrane, such as a Vapour Membrane. Fix Double Drain along the top edge above the primary membrane, with Double Drain cramps at 250mm centres. Overlap vertical joints by 500mm and horizontal joints by 150mm. Filter fabric can be pulled back for successive overlap of the membrane and filter fabric.

Size
2m x 15mtr



Aqua Pump Pro is specially designed for the removal of ground water from basement cavity drain membrane systems. Comprising polyethylene sump, locking access cover and a powerful submersible pump.

Size
240v

Aqua Pump Pro Battery Back Up system comprises a polyethylene sump, locking access cover, powerful submersible pump, 24v back up pump and control panel.

Size
N/A



Drainage Membrane Ancillary Products

Brick Plugs - Fixing Plugs for P5, P8 & P20 Cavity Drains Systems.

Plaster Plugs - Fixing plug for Plaster Membrane.

Sealing Tape - For sealing between Cavity Drain Sheets.

Sealing Rope - For sealing around fixing plugs.

Overtape - Sealing over external jointing of Plaster Drain.

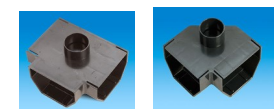
Corner Strip - Preformed corner for Cavity Drain Systems.

X Cramps - Top Edge fixing Cramp for Double Drain Systems.

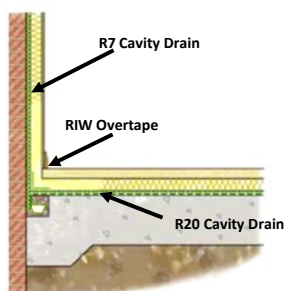
Top Edge Strip - Top Edge strip for Double Drain Systems.

Aqua Channel - Range of Outlets for water flow Control and cleaning.

Product	Size
Brick Plugs	100pp
Plaster Plugs	500pp
Sealing Tape	5no.x 20m Rolls
Sealing Rope	10no. x 20m Rolls
Overtape	115mm x 25m
Corner Strip	150mm x 10m
X Cramps	60pp
Top Edge Strip	2mtr
Aqua Channel	Various



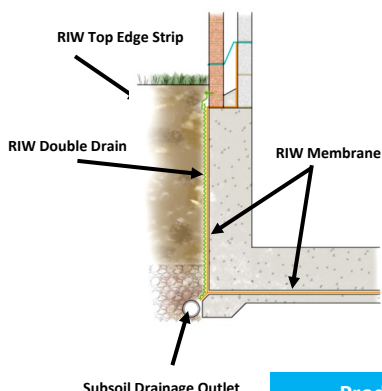
Drainage Sheet Membranes



Product	Size
R7	2m x 20mtr
R20	2m x 20mtr

RIW Cavity Drainage Membrane R7/ P20

Internal tanking cavity drainage membrane system used to collect water entering the basements and sub-structures and channel it to a sump or collection point for disposal. RIW Cavity Drainage Membrane is a 1mm thick high density polyethylene drain board with 7mm or 20mm studs used in situations where site conditions or structural design make it difficult or impossible to use traditional tanking methods.



Size
2m x 15mtr

RIW Double Drain

Cold applied, impermeable, high density polyethylene profiled sheet incorporating a permeable geotextile filter fabric. It is designed to prevent ground water reaching a structure and to enhance the performance of the waterproof membranes. Double Drain can be used in conjunction with a primary waterproofing system or on its own to isolate the structure from the surrounding soil and relieve hydrostatic pressure, by promoting the flow of ground water away from the face of the structure to land drainage.



Product	Size
RIW Fixing Plug	100no. pp
RIW Sealing Tape	20mtr
RIW Sealing Rope	5mtr
RIW Overtape	10mtr
RIW 9000DPC	Various
RIW X Cramps	60pp
RIW Top Edge Strip	2m
RIW Channel	Various
RIW Aqua Pump	See Data

Drainage Membrane Ancillary Products

RIW Fixing Plugs - Fixing Plugs for R7 & R20 Cavity Drains Systems.

RIW Sealing Tape - For sealing between Cavity Drain Sheets.

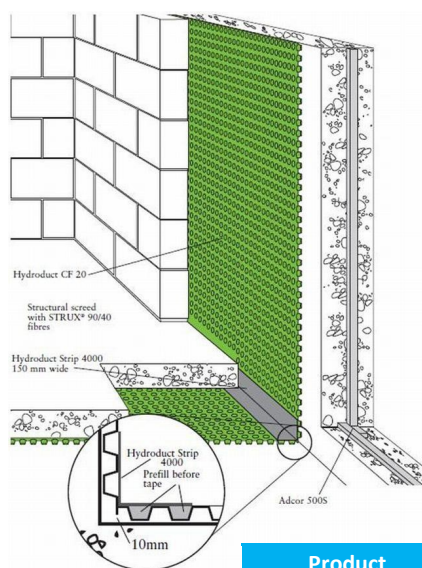
RIW Sealing Rope - For sealing around fixing plugs.

RIW Overtape - Sealing over external jointing of Plaster Drain

RIW Sheetseal 9000DPC - Wall to floor jointing tape

RIW X Cramps - Top Edge fixing Cramp for Double Drain System

RIW Top Edge Strip - Top Edge strip for Double Drain Systems



Size
CF20 - 2m x 20m
CF08 - 2.4m x 20m

RIW can offer a range of sumps, sump pumps, maintainable water management drainage channels and aqua alarms to compliment RIW Cavity Drain Membranes, including sump pumps for lift shafts. These provide effective mechanical drainage solutions for all below ground structures where an RIW Cavity Drain system is being installed.

Hydroduct® CF 20 & CF 08

Highly efficient, cost effective drained cavity former. When installed against the internal face of concrete floors and walls Hydroduct CF will provide a continuous drainage path that must link with the site internal drainage system. 20mm stud for horizontally & vertically. 8mm stud for cavities vertically in lower risk applications.

Hydroduct® CF Ancillary Products

Servitape 4000 - Joint Tape for corners and overlaps.

Hydroduct Channel - High flow capacity outlet for drainage membrane.

Product	Size
Servitape 4000	10m
Hydroduct Channel	2m



Active Waterstops

BASF Masterseal 910

MasterSeal 910 Waterbar is suitable for all construction joints subject to hydrostatic pressure, on one or both sides. MasterSeal 910 provide simple but efficient waterproofing of construction joints. Movements in the joint, e.g. by shrinkage or settlement in the substrate, are taken up by the elastic profile of the MasterSeal 910 Waterbar.

MasterSeal 910 is a component of the BASF pilecap waterproofing and watertight jointing systems. **Masterseal 912w** to be used in conjunction when installing Masterseal 910.

SikaSwell Range

Swellable waterstop which swells in contact with water. Ideal for use in pre-cast concrete, tunnel segments and around all types of penetrations through concrete. Two different profile size's : 20mm x 5mm (**2005**) 20mm x 10mm (**2010**)

SikaSwell S2

One part polyurethane sealant which swells on contact with water. Ideal for sealing around pipe and steel work penetrations through walls and floor slabs. Permanently water resistant.

Hydrotite CJ- Type (Construction Joints)

Hydrotite is the original hydrophilic rubber sealing material used extensively in the construction industry to seal joints between precast concrete units, steel and other materials. **Hydrotite CJ-type** has been specifically developed as an effective, simple and economical sealing material for site formed construction joints, wall / slab interfaces, kicker / wall joints and where pipes or other fittings pass through concrete.

WRAS approved product.

De Neef Swellseal 3V

Expansive hydrophilic waterproofing strip for sealing joints in tunnel segments, underground precast elements, horizontal and vertical construction joints and concrete to steel joints. Swelling capacity of up to 3 times the original volume when in contact with water. Fix Using **DeNeef MS Fixer**

De Neef Swellseal Mastic

A polyurethane based sealant which swells in contact with water. Easily applied with a barrel gun in beads from 5-20mm wide. Ideal for use in areas where normal water stops would be difficult to apply:- daywork joints, cracks, PVC waterstops, between different construction materials, pipe entries, and sealing of precast concrete pipes and culverts.

De Neef Bentorub+

A sodium bentonite / butyl rubber strip for the waterproofing of construction joints and cold joints in concrete. The system is ecological, user friendly and will remain permanently active within the joint for the expected life of the structure and will withstand a hydrostatic pressure of up to 80m head. Has a delayed expansion time of 48 hours so it can be placed in all weathers. Must have at least 70mm cover on all sides for the concrete to withstand the expansion pressures. Fast and easy to install either by Bentogluue onto a preformed rebate or shot firing through the Bento-cage. **BBA** and **WRAS** approved.

Size
910 x 10mtr roll
912w x 310ml Cartridge



Size
2005 = 10m Roll
2010 = 5m Roll



Size
600cc Sausage



Size
10m Roll
1ltr Adhesive



Size
15m Roll
MS Fixer 400ml



Size
310ml



Size
5m Roll
30m Fixing Cage
Bentostick 5kg
Bentogluue 12 xx310ml



Active Waterstops



Size
SW10 = 10m roll
SW20 = 5m roll

Size
310cc Cartridge
600cc Sausage

Size
380cc Cartridge

Fosroc Supercast SW Range

The range consists of swellable waterstops offering different size sections for different applications. Supercast SW10 & SW20 are suitable for use with potable water.

Fosroc Supercast SWX

Grey, elastomeric water-swellable gun applied paste suitable for detailing work or to fill underdulations and surface holes in the concrete beneath the waterstop.

Fosroc Supercast SW adhesive

Gun applied adhesive suitable for locating Supercast SW10 & SW20.



Size
6 x 5m Rolls

Size
6 x 5m Rolls

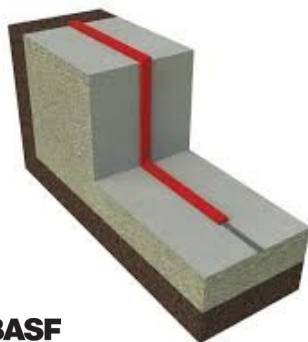
Adcor 500s

Swellable polymer/ butyl rubber waterstop strip that expands in contact with water. When fully encapsulated by poured concrete, the expansive forces form a seal against concrete faces. The seal resists hydrostatic pressure, stopping water from entering the structure.

RIW Waterstop

Hydrophilic waterstop, a sodium bentonite based material, designed to stop water infiltration through insitu concrete construction joints. Sodium bentonite swells when in contact with water, forming an impermeable barrier.

BASF MasterSeal Waterproofing system



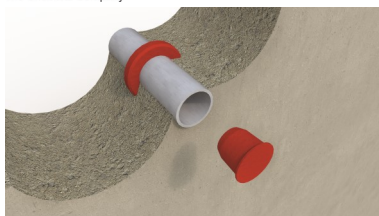
Size
910 x 10mtr roll
912w x 310ml Cartridge

BASF Masterseal 910

MasterSeal 910 Waterbar is suitable for all construction joints subject to hydrostatic pressure, on one or both sides. MasterSeal 910 provide simple but efficient waterproofing of construction joints. Movements in the joint, e.g. by shrinkage or settlement in the substrate, are taken up by the elastic profile of the MasterSeal 910 Waterbar.

MasterSeal 910 is a component of the BASF pilecap waterproofing and watertight jointing systems.

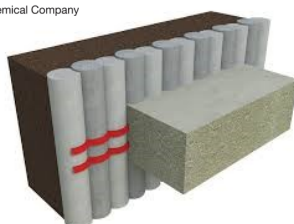
Masterseal 912w to be used in conjunction when installing Masterseal 910.



Size
925 x 120 piece kit

MasterInject 925 - (Formally MasterInject 625)

The MasterInject 925 system for tie holes consists of two elements, a swelling plug and a swelling ring. Both of these elements are made from the same acrylate technology as MasterSeal 910 swellable gasket thus having the same properties.



Size
590 x 5kg tin

MasterSeal 590

MasterSeal 590, when mixed with clean water, provides a ready to use ultra rapid setting durable plugging mortar for active water leaks in concrete and masonry. The material expands as it cures to form a watertight seal with similar characteristics to concrete.

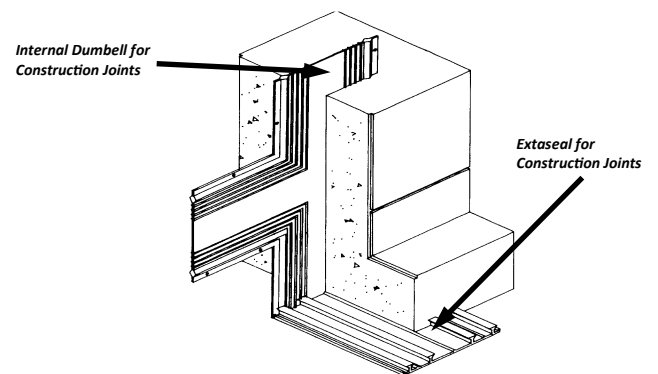
SCP Extaseal External P.V.C Waterstop

A high performance, heavy duty profile waterstop specifically developed to seal joints in concrete structures at the outside surface thus protecting the reinforcing steel against corrosion attack as well as providing a watertight seal. Independently tested to provide a totally effective water barrier up to 27m head of water. Conforms to **DWI water quality regulation 25(1)(c)**

WRAS approved product.

Joint Type	Roll Size
Expansion	200mm x 15mtr
Expansion	250mm x 10mtr

External PVC Waterstop



Extaseal Expansion Joint



Kicker Joint External

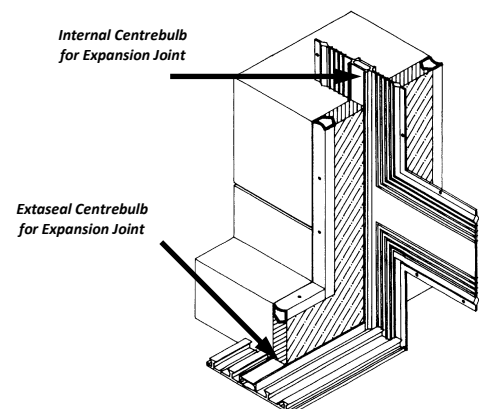
SCP Flat Internal P.V.C. Waterstop

Specifically developed, with their unique rib and end profiles to provide a totally effective water barrier when cast centrally within concrete wall and floor joints. Independently tested to provide a totally effective water barrier up to 27m head of water. Conforms to **DWI water quality regulation 25(1)(c)**

WRAS approved product

Joint Type	Roll Size
Expansion	150mm x 20mtr
Expansion	200mm x 15mtr
Expansion	250mm x 12mtr

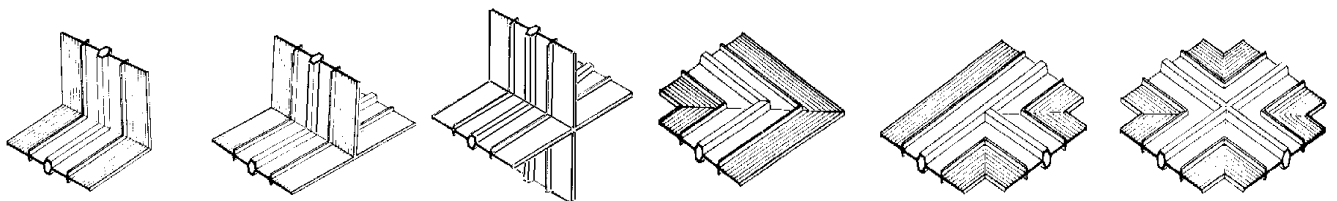
Internal PVC Waterstop



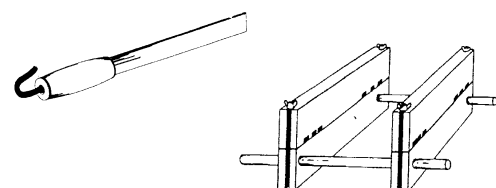
Centrebulb Expansion Joint eyed

Waterstop Junction Pieces

A full range of junction pieces are available for both expansion and construction joint type Waterstops.



Jointing Jig & Hot Knife allow the correct jointing of the Waterstops. The two pieces to be joined are aligned and then clamped down, the hot knife is then inserted between the two pieces until the plastic melts, remove the knife and push the two ends together, then allow to cool.



Injectable Waterstops



Size
25kg

De Neef HA Cut

One component, low viscosity, hydrophobic, aqua-reactive, rigid polyurethane injection grout for cutting off gushing water leaks with a high flow rate and/or high hydrostatic pressure. Also ideal for soil stabilisation and anchoring in gravel. Cure to a tough, rigid, closed cell polyurethane foam.



Size
21.3kg A+B
42.6kg A+B

Sika Injection 201

Low viscous, elastic and solvent-free polyurethane injection resin. In contact with water, a uniform, closed and therefore watertight pore structure forms, which is elastic and flexible. Ideal for permanent watertight sealing with some flexibility to absorb limited movement, in dry, damp or water-bearing cracks and joints



Size
22kg A+B
46kg A+B

Sika Injection 101

Low viscous, fast foaming and solvent-free water-reactive polyurethane injection foam resin, which cure to a dense flexible foam with a fine cellular structure. Used for temporary waterstopping of high water intrusions in cracks, joint and cavities in concrete, brickwork and natural stone. The free foaming expansion in contact with water is up to 40 times. To achieve permanent watertight crack sealing Sika Injection 201 or 203 should be injected subsequently.



Size
Various

Injection Packers

Direct Chemicals are able to supply a range of both metal and plastic packers to suit your requirements. Supplied in various sizes and diameters.

Please contact the office for details.



Product
30m Kit

De Neef Infiltra stop

Infiltra Stop is a preventative injection tube for the permanent sealing of cold and construction joints in concrete, pipe penetrations and voids between slurry walls and slabs, etc. Where new and old concrete will join an injection tube is installed. When water is infiltrating into the joint, a De Neef injection grout is injected through the PVC end pieces, which protrude out of the concrete at easily accessible places. This way the joint is sealed. Preferably, the injection will be executed after curing and setting of the concrete. The leaking joints can thus be permanently sealed.



Product
40m Kit

De Neef Bentoject

Is a combination of a hydrophilic bentonite strip and a post-injectable injection tube into one system as a high performance waterstop for the sealing of construction joints in concrete.

Bentonite outer skin:

Swells in contact with water to a maximum of 400%* of original dry volume. Does not dissolve in water and is non-polluting.

Inner injectable tube:

Can be injected at any time for localized leaks. Can be injected with DeNeef polyurethane resins, acrylic resins, and micro-fine cements.

Coverage : 40m kit with all fixings and connections required.

Flexcrete Fastfill WP

A very rapid setting polymer modified cementitious mortar for arresting water seepage and infiltration under pressure through cracks, joints and voids in concrete and masonry. Can also be used for rapid sealing and jointing around pipework or in water retaining structures. It is non shrink which helps maintain a high bond strength ensuring a durable watertight seal. Sets in 2 minutes.

Yield: 4.25 ltrs

Size
8kg



Flexcrete fastfill WP



Sika 4a Waterstop

A ready to use quick setting leak stopping liquid which is mixed with water and ordinary portland cement to produce a paste for leak stopping against high and moderate water pressure infiltrations in concrete, rock or masonry. Does not contain any chlorides and is suitable for potable water contact. In use it is diluted with water 1:1 and mixed with OPC at a 1:3 ratio. Sets in 15-45 seconds.

Size
5ltr



De Neef Pipe Plug

Unique kit composed of a 1-component polyurethane resin with accelerator, designed to cut off water leaks through pipes, wire conduits, cable transits. Will expand 5 times in volume after approx. 60 - 90 seconds.

Size
Box 5 kits



KÖSTER KD-System

The environmentally friendly KÖSTER KD-System stops active water ingress and safely seals off pressurized water from the negative side. It is resistant to salts which are harmful to the building structure and to aggressive substances which are present in the ground. Salts will not detach the fully cured KÖSTER KD-System coating from the substrate.

KÖSTER KD 1 Base Fast curing mineral sealing slurry with excellent resistance to aggressive ground water and high water pressure

KÖSTER KD 2 Blitz highly reactive powder with extremely short setting time With application of the dry powder, active water leakages are sealed within seconds

KÖSTER KD 3 Sealer Extremely low viscosity silicifying liquid. The active ingredients penetrate deeply into the substrate and react to form an insoluble compound. The pores are plugged and permanently sealed through the mineralisation process.

Coverage : Approx 0.5-1m²

Size
2.5kg



Active leaks....



.....stopped.....



.....in seconds

Cementitious Waterproofing



Size
30kg A+B

Flexcrete Cementitious Coating 851

Two component, thixotropic, cementitious modified polymer coating with high adhesion to both concrete and steel. Designed for internal and external structural waterproofing of concrete and other mineral substrates. Resists positive and negative pressure under 100m head in water retaining and below ground structures as well as roofs and decks. 2mm is equal to 1000mm of concrete cover

WRAS, DWI, BBA approved.

Coverage: 8.33m² @ 2mm



Size
25kg

Flexcrete Monolevel 844SP

Fully waterproof, single component, thixotropic, polymer modified, cementitious repair mortar with high adhesive properties, allowing it to be used as a waterproof screed, as well as a filler, for filling minor voids and defects to provide a fair faced finish. 1mm of 844SP is equal to 1000mm concrete cover.

WRAS & DWI approved.

Coverage: 5m² @ 3mm



Size
30kg A+B

Flexcrete Cemprotect Elastic

Elastomeric, cementitious modified, polymer-rich coating which maintains its flexibility under permanent immersion and when exposed externally. It is ideally suited for waterproofing and protecting concrete and masonry structures which exhibit cracking and where further movement is expected. 2mm coat provides the equivalent to 135mm of good quality concrete cover. Can be applied to damp substrates in temperatures down to 5°C

Coverage: 9.4m² @ 2mm



Size
15kg

Flexcrete Cemprotect E942

Incorporates the benefits of copolymer and epoxy resin technologies into a water based cementitious system to give a hard, durable coating with excellent resistance to water, chloride ions, oxygen and aggressive chemicals. Can be used as a stand-alone anti-corrosion coating for ferrous metals as well as waterproofing and protection of concrete where enhanced chemical and abrasion resistance is needed.

Coverage: 8.1m² @ 2mm



Size
15kg

RIW Cementseal

Used to prevent water ingress into basements, cellars and other below ground structures. The product is suitable for use on exposed or inverted roofing and for podium waterproofing. It can also be used for temporary waterproofing in new construction, to protect from water ingress in order to allow finishing trades to access areas underneath in fast track construction. Resist up to 100m head of positive and negative water pressure.

Coverage: 4m² @ 2mm

RIW Cementflex

Suited for waterproofing and protecting concrete and masonry structures which exhibit cracking, and where further movement is expected. Typical applications include preventing water ingress into basements, cellars and other below ground structures. The product can also be used for sealing water tanks, waterproofing of exposed or buried roofs, and as a crack isolation membrane on concrete floors or screeds.

Coverage: 4.7m² @ 2mm

Cementitious Waterproofing

Sika 1 Pre-bag Waterproofing System

When mixed with the diluted **Sika 1** liquid waterproofing admixture they provide the multicoat components for the structural waterproofing and waterproof render systems. Internal waterproofing render and screed for use above and below ground level.

Coverage : 2m² @ 6mm thickness per bag - plus the addition of **Sika 1 Liquid**. Refer to data

Product	Size
Sika 1 Spritz & Bonding Coat	25kg
Sika 1 Render Mortar	25kg
Sika 1 Finishing Mortar	25kg
Sika 1 Screed Mortar	25kg
Sika 1	5ltr
Sika 1	25ltr



Crack & Joint Waterproofing

Sikadur Combiflex SG System

Sikadur-Combiflex® SG is a flexible prefabricated waterproofing tapes based on modified flexible Polyolefin (FPO) with advanced adhesion. Highly elastic, rot-proof and chemically resistant sealing sheet. Ideal for sealing construction joints, expansion joints, connection joints, cracks and fissures. **WRAS** and **DWI** approved product

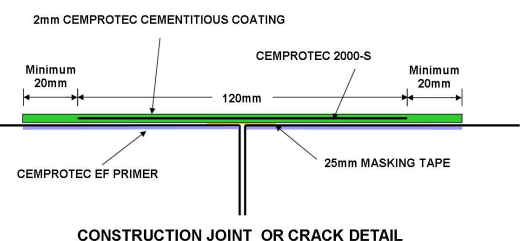
Product / Size
Sikadur 31CF / 6kg
Sikadur 31DWi 6kg
Combiflex 1mm x 10cm x 25m
Combiflex 1mm x 20cm x 25m
Combiflex 2mm x 20cm x 25m
Combiflex 2mm x 30cm x 25m



Flexcrete Cemprotec 2000-S

Advanced, elastomeric, highly tear resistant, breathable, waterproof composite tape, which is embedded in the Cemprotec range of cementitious coatings to give a highly flexible, impermeable seal over "live" cracks and expansion or construction joints in waterproofing applications. Permanently elastomeric composite tape exhibiting over 600% elongation. **WRAS** Approved.

Product / Size
2000's 120mm x 10m
2000's 120mm x 50m
2000's 200mm x 50m
2000BJT x 10m
Cemprotec E942 x 15kg
Cemprotec 851 x 30kg
Cemprotec EF Primer 5ltr



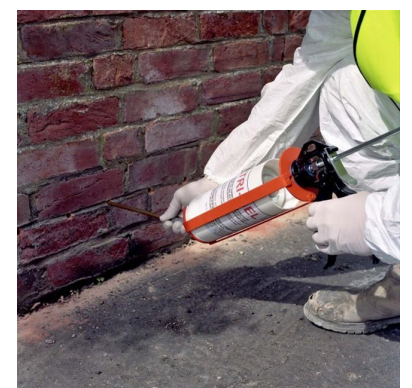
DPC Injection

Tri-Gel DPC

Advanced chemical damp-proofing DPC gel, which guarantees effectiveness in damp walls. The gel allows placement in horizontally drilled holes without dripping or the use of special pumps. Easy to use, low odour and water soluble. Faster to install than traditional pressure injection systems.

Coverage: Refer to data

Size
Box 12 x 1ltr
Application Gun
Injection Nozzle



NOTES



Grouting

Cementitious Grouting

Epoxy Grouting

Polyester Grouting

Mixing Equipment

Grouting Accessories

Cementitious Grouting



Size
20kg

Pozament - High Flow Construction Grout (GA)

High Flow Construction Grout has been specifically designed to provide a high strength fluid grout for pouring into and under stanchion plates, machine base plates, parapet rails, for supporting bridge bearings and for filling ducts in post tensioned and pre-stressed structures.

Yield: 12.2 ltrs



Size
20kg

Pozament Cemrok Ultra High Strength Construction Grout ExCel

A non shrink, very high strength cementitious grout. It has high flow characteristics to achieve penetration under large base plates with no bleed and zero shrinkage. Chloride free. It is a very fine grout with no sand. Can be pumped.

Yield: 11.5 ltrs

Size
25kg

Parex CS Grout

A high strength, non shrink, flowable grout which is chloride free. Low water absorption with good freeze-thaw stability plus resistance to oil, sea water and mild alkali attack. Parex CS Grout has certified compliance with **DTP** Specification for Highways Works Clause 2601. **WRAS** Approved Product.

Yield: 13.25 ltrs



Size
25kg

Parex 100 Newton Grout

An ultra high strength, non shrink grout specially formulated using a Portland cement powder mix. Powerful plasticising agents produce a highly flowing grout at low water content. Chloride free and meets **DTP** Specification for Highways Works Clause 2601 and CRD C621

Yield: 13 ltrs

Size
25kg

Parex Speedsure S Grout

A rapid setting (35-45 minutes) grout with high early strength gain of 25N/mm² in 2 hours. It is a non-shrink flowable grout which is chloride free. Ideal for use in trafficked areas where down time must be kept to a minimum such as car parks, factory floors, loading bays and other hard standing areas.

Yield: 12 ltrs



Size
25kg

Parex TS Grout

Fine mix of Portland cement to produce a non-shrink grout with good pumpability and flow plus high strength properties. TS Grout may also be used for grouting narrow gaps down to 10mm in structural support situations, back grouting including stabilising of loose fill and gabions.

Yield: 15 ltrs

Size
25kg

Weber Five Star Grout

High strength, high flow grout for use under machine base plates, void filling, underpinning and crash barriers. Can be pump, poured, trowelled or dry-packed.

Yield: 14 ltrs

Cementitious Grouting

Fosroc Conbextra GP

General purpose, non-shrink cementitious grouting of gap thicknesses 10 to 75 mm. Recommended applications at flowable consistency include stanchion base plates, bolt pockets and void filling.

Yield: 13.25ltr

Size

25kg



Fosroc Conbextra HF

Supplied as a ready to use dry powder. The addition of a controlled amount of clean water produces a free-flowing grout for gap thicknesses up to 100 mm. In addition the low water requirement ensures high early strength and long-term durability.

Yield: 13.25ltrs

Size

25kg



Fosroc Cebex 100

Admixture for site batched cementitious grouts where a reduced water/cement ratio and positive expansion is required. Applications include bed grouting, duct grouting, non-shrink infilling and jointing.

Yield: Refer to data

Size

24 X .227kg



Parex Dry Pack C

Portland Cement based powder mix including special shrinkage compensating components. The mixed mortar can be rammed into gaps between concrete units, without the use of shuttering, to create a supporting fill. The shrinkage compensating additives ensure that the placed mortar maintains contact within the filled section. Can placed in horizontal and vertical gaps of 5mm-100mm

Yield: 12ltrs

Size

25kg



Fosroc Conbextra BB

Bridge bearing grout that complies with DTp highways specification clause 2601. Can be applied from 10mm - 100mm in one application.

Yield: 13.5 ltrs

Size

25kg



Fosroc Conbextra TS

Supplied as a ready to use dry powder. The addition of a controlled amount of clean water produces a free-flowing grout for gap thicknesses 75 - 500mm. In addition the low water requirement ensures high early strength and long-term durability

Yield: 12ltr

Size

25kg

Flexcrete Monopour PG & PC6

High performance grout incorporating the most advanced microsilica, shrinkage compensating and styrene acrylic copolymer technology. Rapid hardening, high strength, non-shrink material. All admixtures used are chloride free. PC6 is a micro concrete used for larger depths in excess of 50mm. Can be pumped, poured or troweled. Suitable for concrete repairs or heavy duty applications beneath base plates, plinths and stantion bases. Flexcrete Monopour PG & PC6 fully complies with DTp Standard Part 4 BD 27/86 for the repair of Highway Structures. Typical strengths are 24.3N/mm² at 24 hrs and >70N/mm² 28 days.

Yield :-12.5 ltrs. & 12.2 ltrs. Minimum 80 bag order

Size

25kg



Epoxy Grouting

PAREX®

Product	Size
Parex E33	5kg
Parex E33	28.57kg

PAREX®

Product	Size
Parex E20	24.6kg
Parex E70	16.75kg
Parex E140	18.75kg



Size
12kg
25kg



Product	Size
Conbextra EP10	2 x 1.5ltr



Product	Size
Conbextra EPR	8ltr
Conbextra EPR	16ltr

PAREX®

Size
1kg

Parex E33 Epoxy Grout

A three component, volume stable, free flow Epoxy Resin Grout. Exceptional mechanical strength and resistance to chemical attack. Used in gaps from 10mm and 50mm by pouring or pumping. Suitable for bridge bearings. Typical strengths are 55N/mm² at 24hrs and 85N/mm² at 7 days.

Yield: 14.75 ltrs or 2.9 ltrs

Parex E20 E70 and E140 Epoxy Grout have been designed where greater thickness are to be grouted. E20 for gaps 8mm - 25mm E70 for gaps of 35mm to 75mm, E140 for gaps of 70mm to 175mm

SikaDur 42 HE

A three component solvent free, rapid curing, high strength epoxy pourable grout. Based on a special combination of epoxy resin and aggregates to allow the material to flow and self-level. Used in gaps from 10mm and 50mm. Typical strengths are 55N/mm² at 24hrs and 110N/mm² at 7 days.

Yield: 12 ltrs

Fosroc Conbextra EP Range

Epoxy resin based products designed for free-flow grouting of gap thicknesses from 0.25 to 120 mm.

Two grades of product are available:

Conbextra EP10 for grouting gap thicknesses from 0.25 to 10 mm. An all-liquid system consisting of a base and hardener.

Yield: 1.5ltr

Conbextra EPR for grouting gap thicknesses from 10 to 120 mm. A three-component system consisting of base resin, liquid hardener and specially graded inert fillers.

Yield: 8ltr & 16ltr

Parex Epoxy 200

A three part epoxy resin anchor, offering additional bond integrity. Particularly suited to clean smooth walled holes i.e. diamond drilled holes. Typical test loads :- 1Tonne uniaxial pull out load for each 25 mm of embedment, in use a safety factor must be applied.

Yield :- 0.65 ltrs

Polyester Grouting

PAREX®

Size
11.55kg

Parex Polyester Grout

Polyester Grout is used for the rapid grouting and commissioning of machines and structures where the bed thickness is between 3mm and 25mm. Units to be grouted may contain areas of concrete to concrete, concrete to steel and steel to steel. The product is suitable to support all equipment subject to heavy loadings and may be used effectively to fill misaligned saw cuts.

Yield: 7.5 ltrs

Grouting Accessories

Bolt Boxes – Waxed Cardboard

Manufactured from waxed cardboard they allow easy bolt location and adjustment with minimum displacement of reinforcement and concrete. To allow stripping and re-use, 25mm of the cone should be left protruding and rotated before the concrete has completely set.

Approximant No. of cones per 25kg bag of grout Using M20 Bolt						
WCB1	WCB2	WCB3	WCB4	WCB5	WCB6	WCB7
36	16	9	6	5	3.5	3

Bolt Boxes – Polystyrene

Manufactured from expanded polystyrene they allow easy bolt location and adjustment with minimum displacement of reinforcement and concrete.

Approx No. of cones per 25kg bag of grout Using M20 Bolt						
PB1	PB2	PB3	PB4	PB5	PB6	PB7
19	14	11	9	8	7	5

Holding Down Bolts

A range of holding down bolts is available in Grade 8.8 Steel. Price includes nut, washer, and a 100mm x 100mm x 10mm plate. Other sizes available to order

Norsekem Poly-dissolve & Poly-dissolve “Safe”

An emulsifiable solvent based product designed to dissolve polystyrene box outs, void formers, bolt boxes etc.

Has the ability to dissolve up to 10 times its own volume, depending on application and polystyrene density. Poly-dissolve “Safe” is a less hazardous formulation with a pleasant slight citrus smell.

Heavy Duty Plastic Levelling Shims

For non structural, temporary support and alignment of pre-cast panels, components, bases etc prior to grouting or packing. Two types are available, square and horseshoe both have overall dimensions of 70mm x 70mm. A range of sizes allow various heights to be achieved.

The Bolt Cracker

The Bolt Cracker is an innovative new invention designed to maximize holding down bolt movement. Guaranteed full movement inside the cone.

No damage to bolt head or thread during stripping stage.

Denso Tape / Petrolatum Tape

For protection of bolt heads prior to concrete pours.

Code	length
WCB1	229mm
WCB2	305mm
WCB3	380mm
WCB4	457mm
WCB5	534mm
WCB6	610mm
WCB7	762mm

Code	length
PB1	225mm
PB2	300mm
PB3	375mm
PB4	450mm
PB5	525mm
PB6	600mm
PB7	762mm

Code	length
HDB16/30	M16 x 300
HDB16 / 45	M16 x 350
HDB20/30	M20 X 300
HDB20/37	M20 X 375
HDB20/45	M20 X 450
HDB24/37	M24 X 375
HDB24/45	M24 X 450

Product	Size
Poly-dissolve	20ltr
Poly-dissolve Safe	5ltr
Poly-dissolve Safe	25ltr

Size	No. Per Pack
2mm	250
3mm	250
5mm	250
7mm	125
9mm	125
10mm	125
20mm	50

Code/Bolt dia	No. Per Pack
BC20 - 20mm dia	100
BC24 - 24mm dia	100

Size	No. Per Pack
50mm x 10mtr	24
75mm x 10mtr	16





Product
MM22 Mixer

MM22 Megamixer 1150 watt 2 speed

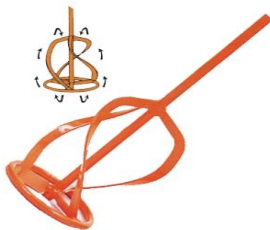
With the latest 'H' frame design for ease of handling this is the most powerful mixer for constant output of heavy materials. Comes with soft start and variable speed 0-250 –450 rpm to reduce splash on start up Recommended for heavy materials and large mixes up to 4 bags (100ltr). This is the trade standard for plaster, render, flooring and repair contractors requiring a reliable and fast mixer. Supplied with a MR3 140G threaded paddle for direct attachment.



Product
MM19 Mixer

MM19 Megamixer 1000 watt single speed

With a 'D' frame design this is our best selling mixer for the building trade. Comes with soft start and variable speed 0-450 rpm to reduce splash on start up Recommended for mixes up to 2 bags (75ltr). Supplied with a MR3 130G threaded paddle for direct attachment.



Size
MR3 100mm
MR3 130mm
MR3 140mm

Epimixer Paddles

Heavy duty paddles for constant trade use. Paddles denoted with a "B" have hexagonal shafts for std chucks and "G" are threaded for direct attachment to Megamixers. Two types are available:-

MR3 for wet, plastic pourable materials, such as grouts and plasters. Paddle mixes from top to bottom giving an easy mix action with the paddle floating in the material.



Product
65ltr Mixing Tub

Mixing Tubs

Heavy duty plastic mixing tubs for up to 3 bag (65ltr) mixes. Smooth sides and a flat bottom with carry handles make it ideal for all types of material mixing.



Product
RMD32 FAM

Rotamixer RMD 32 Forced Action Mixer

Designed for use by a single operative and ideal for large or repetitive jobs. Compact and easy to clean. The rotating drum produces a centrifugal action and the paddle generates a radial and axial mix action producing an excellent mix. The paddle is adjustable for liquid and heavy mixes and sweeps clean the side of the drum and across the full width of the base to ensure proper mixing. Recommended for mixes up to 1 bag (25ltr).



Product
RMD65 FAM

Rotamixer RMD 65 Forced Action Mixer

Designed for use by a single operative and ideal for large or repetitive jobs. Compact and easy to clean. The rotating drum produces a centrifugal action and the paddle generates a radial and axial mix action producing an excellent mix. The paddle is adjustable for liquid and heavy mixes and sweeps clean the side of the drum and across the full width of the base to ensure proper mixing. Recommended for mixes up to 3 bags (65ltr).



Flooring Compounds

Subfloor Levelling & Self Smoothing Compounds

Wearing Course Toppings

Screed Admixtures / Rapid Drying Screeds

Fast Track Floor Repairs

Floor Coatings / Deck & Balcony Coatings

Flooring Accessories & Cleaning Aids

Subfloor Levelling & Self Smoothing Compounds



Size
22kg + 4.8ltr

Arditex NA

Award-winning latex levelling compound can be used on almost any substrate without priming, including bitumen and adhesive residues, tiles and flooring grade plywood. Receives floor coverings in just 4 hours. Apply feather edge-30mm thickness. Suitable for underfloor heating. For internal use only.

Coverage: 5m² @ 3mm thickness



Size
22kg + 4.8ltr

Arditex

Ultra fast setting sub-floor smoothing compound, can apply floor coverings after 4 hours and is suitable to use over most old adhesive residue, and under DPM's.

Coverage : 5m² @ 3mm thickness

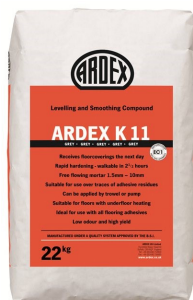


Size
25kg + 5ltr

Mapei Latexplan Trade

Two-part self leveling and smoothing compound that consists of special cements, graded silica sands and additives with a synthetic rubber latex. For leveling 1-10mm in one application. Can be walked on in 1.5-2 hrs and will receive flooring in 12 hours.

Coverage : 6m² @ 3mm thickness



Size
25kg

SikaFloor Level 30

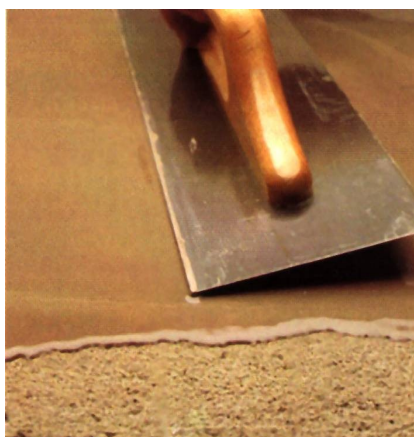
One component, polymer modified, versatile and durable, pumpable, cementitious screed subfloor which can be applied manually or by pump to achieve rapid, flat, economic substrate levelling prior to the application of the final floor finish.

Coverage : 4.6m² @ 3mm thickness

ARDEX K 11

Free flowing rapid hardening levelling and smoothing compound for a range of subfloors including cement/sand screeds, gypsum screeds, concrete and traces of adhesive residues. Can be walked on in just 2 ½ hours and receives floor coverings after 16 hours. Suitable for underfloor heating. For internal use only.

Coverage: 7m² @ 2mm thickness



Size
25kg

Ultrafloor Level iT Base

For smoothing and levelling internal floors at 2-50mm depth on irregular substrates, prior to the application of a decorative covering. Suitable for most common substrates and fixed over-boarded wooden floors where movement is unlikely. Protein free and suitable for use with underfloor heating.

Coverage: 5m² @ 3mm thickness

Size
25kg

Mapei Ultraplan

Single Component, leveling and self smoothing compound for leveling 1-10mm in one application. Ultra fast drying, ready to receive flooring in 12 hours. It can be pumped or hand applied.

Coverage : 6m² @ 3mm thickness

Flexcrete Cemprotec E-Floor

A major advancement in flooring technology incorporating the benefits of copolymer and epoxy resin technologies into a self smoothing, rapid hardening, water based, cementitious system. Gives a hard, durable 1.5-3mm thick coating with excellent resistance to abrasion, water, chloride ions and aggressive chemicals for the protection of concrete floors in the most demanding environments. Can be used internal and externally.

Coverage: 8.1m² @ 2mm thickness

Mapei Ultratop

Single Component, abrasion resistant industrial floor topping which is self leveling from 5 - 40mm in one application. Ultra fast setting. It can be pumped or hand applied. Internal use only.

Coverage: 3m² @ 5mm thickness

Ardex K80

Rapid drying industrial topping / wearing surface. Withstands heavy wheeled traffic and had excellent abrasion resistance. Can be applied from 5 -12mm over existing concrete surfaces. Internal use only.

Coverage: 3m² @ 5mm thickness

Cemflow Exterior Topping

Self smoothing topping which allows external areas to be resurfaced and allows wheeled vehicles to traffic the surface after only 48 hours. Can be applied from 5– 15mm in one application. Can be used internally and externally.

Coverage: 3m² @ 5mm thickness

Parex SBR Friction Coat

A Portland cement based powder containing hard irregular aggregate and a modified styrene butadiene latex gauging liquid. Used for thin overlay applications, 3-5mm, to trafficked concrete surfaces to increase surface friction creating a anti-skid surface. Also suitable for evening out surface irregularities to concrete floors exhibiting rain damage when poured.

Coverage: Refer to data

Ardex K301

Fast setting, internal and external levelling compound. Ideal for paths, drives, court yards and parking areas. Walkable after only 2 hours and can withstand light vehicular traffic after on 48 hours. Applied from 2-20mm thickness.

Coverage: 7.8m² @ 2mm thickness

Size
30kg

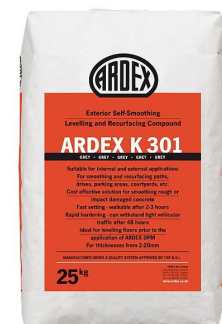
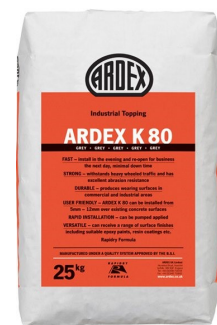
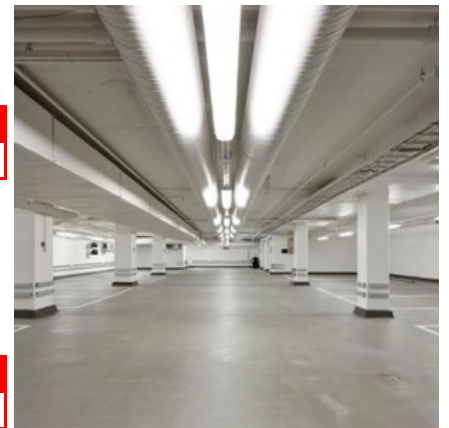
Size
25kg

Size
25kg

Size
25kg

Size
27.5kg

Size
25kg



Flexcrete Fastfill

Rapid setting, Portland cement-based structural mortar for the durable repair of concrete which cannot be taken out of service for long periods, or in areas subjected to heavy wear such as roads, runways, bridges, decks, floors and footpaths. Sets in 10 minutes at 20°C yielding a durable, high strength mortar. Complies **DTp Standard** (BD 27/86) **BBA, WRAS** and **DWI** approved product.

Yield: 13.3ltr = 1m² @ 13.3mm thickness

Size

25kg



Size

25kg

Sika®Screed HardTop-80

Soft plastic consistency, polymer modified, fast curing, rapid load bearing and over coatable, horizontal levelling mortar that is designed for application in a minimum layer thickness of 8 mm. It is almost shrinkage-free during hardening and curing, plus it has very high abrasion resistance and compressive strength.

Yield: 11.9ltr = 1m² @ 11.9mm thickness

Size

25kg



Sika Rapid Repair Mortar

Fast setting cementitious repair mortar idea for floor slabs where an early high strength repair is required. Also suitable for bedding of manhole covers.

Yield: 11.9 ltr = 1m² @ 11.9mm thickness

Size

25kg



FEBSET 45

Specially formulated repair mortar, based on magnesia-phosphate pre-mixed with selected aggregates, which gives controlled, extremely high early strengths in temperatures ranging from -20°C (or lower) up to over 30°. Ideal for freezer room and temperature controlled areas.

Yield: 11.6 ltr = 1m² @ 11.6mm thickness

Size

25kg

Parex Speedcrete S Acrylic

A fine, quick setting, rapid hardening concrete incorporating ASR resistant 6mm aggregate and a dispersible acrylic polymer powder. Strength gain of 25N/mm² in 2 hours. Mixed consistency of "mobile concrete" suitable for downward facing holes, in concrete roads, runways, bridge decks etc. Complies with **DTp Standard** (BD 27/86) Materials for the . **L.U.L** approved product.

Yield: 12 ltrs = 1m² @ 12mm thickness

Size

11kg

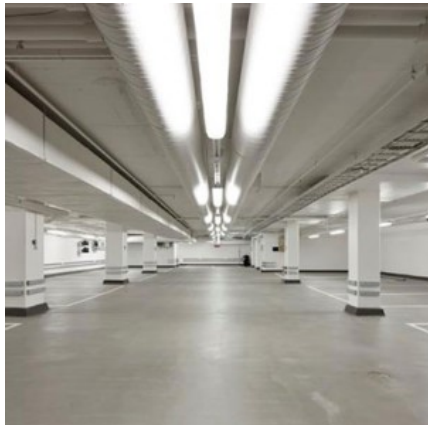


Ardex Ardurapid A45

Ideal for rapid repairs of internal concrete, screeds, renders and concrete stops. Receives finishes after 90 minutes regardless of thickness. Slump free - Ideal for vertical and horizontal repairs.

Yield: 7ltrs = 1m² @ 7mm thickness

Floor Coatings / Deck & Balcony Coatings



Size

30kg

Flexcrete Cemprotect E-Floor

A major advancement in flooring technology incorporating the benefits of copolymer and epoxy resin technologies into a self smoothing, rapid hardening, water based, cementitious system. Gives a hard, durable 1.5-3mm thick coating with excellent resistance to abrasion, water, chloride ions and aggressive chemicals for the protection of concrete floors in the most demanding environments. Can be used internal and externally.
Coverage: 8.1m² at 2mm



Size

5kg

10kg

DCP Strongcoat HB

A two-pack solvent free, epoxy-based coating which provides floor surfaces with a seamless, hygienic and cosmetically attractive finish. Ideal for light to medium duty areas. Applied by roller in two coats. Has very good durability towards pedestrian and vehicular traffic. It also has very good resistance towards many of the chemicals commonly found in an industrial environment. Available in a wide range of colours.
Coverage: 4m² per kg per coat

DCP Strongcoat WD

A two-pack solvent free, water-based, epoxy-based coating which provides floor surfaces with a seamless, hygienic and cosmetically attractive finish. Applied by roller in two coats. Has very good durability towards pedestrian and vehicular traffic. It also has very good resistance towards many of the chemicals commonly found in an industrial environment. Available in a wide range of colours.
Coverage: 8m² per kg per coat



Size

10kg

20kg

SikaFloor 261

Two part, chemical resistant and abrasive resistant coating suitable for car park decks, warehouse floors and production areas. Easy applied in two coats by brush or roller. Slip resistance can be achieved. *Coverage: Refer to data*



Size

15 ltr

Roofdex HB

Suited for both refurbishment and new build projects, with compatibility to a wide range of roofing substrates including asphalt, felt and cementitious roofs. A range of systems can be created; it can be used unreinforced for the ultimate in cost-effective waterproofing, or it can be reinforced with various grades of glass fibre matting systems to provide long-term weatherproofing. It is available in solar reflective white to reduce energy consumption, as well as reducing air conditioning costs. Supplied as a single pack product.
Coverage: Refer to data



Direct Chemicals are able to offer a full range of car park decking, balcony coatings and podium decking systems. Including MMA systems, high performance epoxy coatings and modified cements. For further information and written specifications please contact our office. We have solutions to meet every requirement and budget.

Floor Accessories

Skid Leveller Complete with Handle

Used to spread floor coatings, the pins are adjustable to allow for the correct thickness of material to be placed.

Size
Each



12" Spiked Roller with Handle

Roller with spikes designed to remove air bubbles trapped in floor coatings and smoothing compounds.

Size
Each



12" Floor Squeegee with Handle

Spreading of primers and pushing around floor compounds.

Size
Each



Spiked Overshoes

Slips directly over your existing footwear. One size fits all.

Size
Pair



DiChem Foam Tapes

Used to create an edge or control levelling compounds to the areas being applied to.

Available in a variety of sizes and types:- HxWxL

Type 1- Black, Polyethylene, 6mm x 12mm x 10m

We are able to supply other sizes to order please enquire.

Size
6 x 12mm x 10m



Cleaning Aids

DiChem Alfanol HD

A biodegradable powerful water based penetrating cleaner particularly suited to the removal of grease, diesel and oil from hard surfaces such as concrete, plant, vehicles etc.

Size
25 ltr

DiChem Con-Rem

Suitable for etching concrete and cleaning prior to application of coatings. Normally diluted with 4-6 parts water in use and applied by brush or spray. Concentration 28% Hydrochloric Acid.

Size
25 ltr



Notes



Joint Sealing

One Part Sealants

Two Part Sealants

Fire Rated / Intumescent Sealants

Compressible Joint Sealing

Hypalon Jointing

EPDM Sealing

Application Tools

Joint Fillers

One Part Sealants



Size

600ml

Arbothane 1245

One-part Polyurethane Sealant, which cures on exposure to moisture vapour to form a firm but flexible rubber. Non-biodegradable and abrasion resistant. Recommended for use in sea walls and trafficked floor joints where a fast curing one-part sealant is required.



Size

600ml

Fosroc Nitoseal MS300

Suitable for sealing saw-cut and movement joints in internal floors, and external joints where abrasion resistance is required. One part, high modulus sealant based on hybrid silyl modified polyether technology. Can be applied between 6mm and 20mm wide, for trafficked joints (up to 40mm non-trafficked)



Size

600ml

Nitoseal MS600

Suitable for sealing movement joints in buildings and civil engineering structures including joints that will be subject to intermittent or permanent immersion. Approved for use with potable water.



Size

600ml

Polyflex- HM (50FC)

One Component high-modulus sealant/adhesive based on Polyurethanes. Excellent adhesion to most building substrates without primer. Fast curing. Used for interior and exterior waterproof joints in building and metal construction. Joints between wood, metal, aluminium or PVC frames and masonry.



Size

380ml

Arbomeric MP10

One part Low Modulus Modified Polymer Sealant which cures on exposure to moisture vapour to form an elastic rubber. Recommended for use in many forms of construction including perimeter sealing in curtain walling, perimeter sealing of polyester powder coated frames, structural joints in brickwork and blockwork and joints in lightweight cladding.



Size

380ml

Arbomeric MP20

Recommended for use in many forms of construction including structural joints in heavy cladding, structural movement joints in floors and floor joints in heavily trafficked areas. One part, low modulus sealant.

Size

310ml

Sikaflex®-11 FC+

One part, moisture curing, elastic joint sealant and multipurpose adhesive based on polyurethane. Suitable for indoor and outdoor applications. Used as a *joint sealant* for vertical and horizontal joints, soundproofing of pipes between concrete and sheathing. Caulking between partitions, crack sealing seam sealing, sealing in metal and wood construction.

Size

310ml

600ml

DiChem FORMSIL HMA Multi Purpose Silicone (Clear)

Very cost effective, high modulus silicone sealant that cures quickly to provide a flexible seal. Good adhesion but easier to remove than most makes this an ideal silicone for sealing gaps in formwork construction or for grout check against kickers etc.

One Part Sealants

Sikaflex®-PRO 3 iCure

High performance Floor joint sealant, suitable for movement and connection in both indoor and outdoor applications for pedestrian and traffic areas. Elastic sealant Sikaflex PRO-3 is a moisture curing 1-part elastic sealant based on polyurethane with high mechanical resistance using i-Cure Technology.

Size
300ml
600ml



Sikaflex Tank N

One part, moisture curing, elastic joint sealant based on polyurethane. It is used in areas for the storage, filling and handling of water polluting liquids. Ideal for use in Filling and handling of water - polluting liquids, i.e. filling stations, handling areas storage tanks and containment bunds, barrel stores.

Size
600ml

SikaBond® AT-Universal

Multi-purpose adhesive SikaBond AT-Universal is a one part, solvent-free, elastic adhesive. SikaBond AT-Universal is based on Silane Terminated Polymers and has a very good adhesion on both non-porous and porous

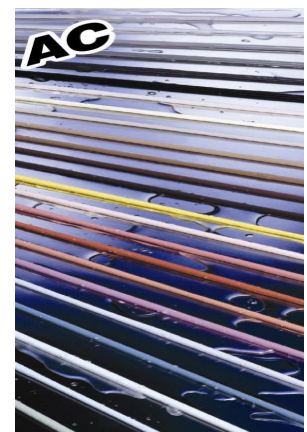
Size
600ml



Mapei Mapesil AC

An acetic-cross linking silicone sealant suitable for sealing glass, ceramic and anodized aluminium. After first having used a bonding enhancer, **Primer FD** can also be used on concrete, wood, metal, painted surfaces, plastic and rubber. Used for sealing expansion joints of $\pm 20\%$ expansion of the initial size. Forming a perfectly elastic gasket between different elements in building, mechanical engineering. Sealing joints in wall and floor coverings of ceramic and cement, provided they are not subject to heavy abrasion. Sealing joints between sinks or sanitary ware and ceramic tiles in kitchens, bathrooms and showers with colours coordinated with the grouts. Sealing expansion joints in swimming pools. Assembling compositions of glass tiles and artistic stained glass windows. Sealing glazing of door and window frames. Sealing air ducts, water pipes, etc.
Colours :- 26 In total

Size
310ml



Two Part Sealants

Thioflex 600 Gun Grade

Two part, polysulphide sealant, suitable for sealing movement joints in buildings and civil engineering structures, including superstructures, floors, basements and subways. **DTP** approved for highway works.

Size
2.5ltr



Thioflex 600 Pouring Grade

Two part, polysulphide sealant, suitable for sealing movement joints in buildings and civil engineering structures, including superstructures, floors, basements and subways. **DTP** approved for highway works.

Size
5ltr



Colpor 200PF

Pouring Grade sealant for the sealing and maintenance of joints in concrete roads, concrete runways and hard standings. Colpor 200PF is particularly suitable for sealing areas where fuel and oil spillage might occur such as aircraft fuelling areas, oil terminals, garage forecourts, parking and cargo areas.

Size
2 x 5ltr



Two Part Sealants



Size

1.2 ltr

Arbokol 1025 SP

Unique two part Epoxy sealant which cures to form a hard wearing seal, designed to accommodate small amounts of movement in extension but considerable movement in compression. Recommended for use in a variety of internal stress relief joint systems where continual water resistance and a high degree of chemical resistance. Ideal for use in swimming pool applications and area subject to water immersion.

Size

1.2 ltr

Arbokol 1025 Secure

Recommended for use in a variety of internal stress relief joint systems where a tough, non pick seal is required. Ideal for schools, prisons - sealing of doors and windows, anti pick / anti vandalism joints, heavy duty floor joints and tile to tile joints.



Size

5 ltr

SCP Coldseal 200D Concrete Pavement Sealant

A two part modified polyurethane cold applied sealant for joints in concrete paved areas, roads, bridge decks, airfield runways and warehouses, where resistance to attack by fuels and oils is required. Pouring grade only. Complies to BS 5212:1975

Fire Rated / Intumescent Sealants



Size

380ml

Arbo XL 1075

High quality general purpose intumescent sealant with acoustic properties. One part Acoustic, Fire Resistant, Water Based Acrylic Sealant. When subject to flame, Arbo XL 1075 will intumesce, blocking the passage of fire and smoke. Tested in joints up to 50 mm wide and 4 hours resistance.



Size

380ml

Arbosil 1070

One part Low Modulus Fire Resisting Silicone Sealant which cures on exposure to moisture vapour to form a very elastic silicone rubber. Good adhesion to concrete, brickwork, metals and many other common construction substrates. Recommended for sealing expansion joints and other details in walls or screens to prevent the passage of fire. Fire resistance of 4 hours



Size

310ml

Fire Mate Sealant

Intumescent acrylic sealant that swells when exposed to temperatures in excess of 125°C to prevent the passage of fire and smoke and has a fire rating of up to 5 hours in certain joint configurations. Fire rated to BS 476 Part 20/EN1366-4 (2006). Acoustic rates to BS EN ISO 140/3. Tested for air permeability to EN13141-1



Size

900ml

AC95 Acoustic Sealant & Adhesive

Intumescent acrylic sealant and adhesive specifically formulated for fire rated sealing and bonding applications on plasterboard and other kraft lined insulation boards. Provides up to 5 hours fire resistance, tested to BS 476, part 20/EN1366-4 (2006). Acoustic rated to BS EN ISO 140/3. Tested for air permeability to EN13141-1 Ventilation for buildings.

Compressible Joint Sealing

Compriband

An impregnated joint sealing tape for use in a wide variety of movement joints and other applications. Weather tight against the most severe combinations of wind and rain, it satisfies most expectations as an external weather seal in building and civil engineering applications. With full BBA approval, the product has been extensively tested and has a proven reputation throughout Europe and the UK.

Consult our office for application



Special Jointing

Sikadur Combiflex SG System

Sikadur-Combiflex® SG is a flexible prefabricated waterproofing tapes based on modified flexible Polyolefin (FPO) with advanced adhesion. Highly elastic, rot-proof and chemically resistant sealing sheet. Ideal for sealing construction joints, expansion joints, connection joints, cracks and fissures. **WRAS** and **DWI** approved product.

Product / Size
Sikadur 31CF / 6kg
Sikadur 31DWi 6kg
Combiflex 1mm x 10cm x 25m
Combiflex 1mm x 20cm x 25m
Combiflex 2mm x 20cm x 25m
Combiflex 2mm x 30cm x 25m



EPDM Sealing

Arbo Façade Solutions have developed their own EPDM system to seal internally between window frames and a variety of substrates using high quality EPDM utilising solvent free adhesives. This important detail can no longer be ignored. Responsible fabricators and installers are being asked by main contractors 'to seal that gap'. This green system helps the building achieve Document L.

Legislation is going to get tougher in the future, and your clients will be expecting you to provide a robust solution at this detail for certification of the building. We can help by specifying and carrying out site visits to ensure successful completion of contract.



Full range of size's and adhesives available. Please contact our technical sales office with your requirements.

Application Tools

Skeleton Gun - For pre filled sealant cartridges. Fits 300/310/380 & 400ml cartridges

Sausage Barrel Gun - Die Cast Aluminium barrel gun for use with 600cc sausages complete with spare nozzles.

Two Part Sealant Solid Barrel Gun - Die Cast Aluminium barrel gun for use with two part sealants Complete with spare nozzles.

Mixing Paddle - For "pot mix" sealants.

Follower Plate - Assists filling barrel gun from Gun Grade sealant Packs.

Tool Cleaner - Solvent for cleaning barrel gun & tools.

Primer application brushes - 1", 2" 3" & 4" brushes for use of applying primer.



Joint Fillers



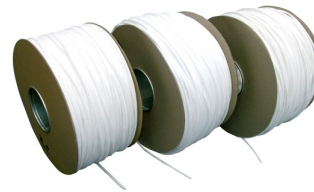
Thickness	Sheet Size
10mm	2 x 1m
12mm	2 x 1m
20mm	2 x 1m
25mm	2 x 1m

Miothene / Expandaf foam / Aerofil 1 - Sheet / Strip / Cord-

A high performance expansion joint filler made from closed cell expanded polyethylene foam. Available in sheet or cut strips with tear off to form sealant void. It is robust, non-absorbent with excellent recoverability, low load transfer, non extruding and resistant to most acids and alkalis. *Sheet Sizes may differ on manufacture
We are able to supply any thickness required by fabrication.



Thickness	Strip Size
10,12,20,25	100mm x 10m
10,12,20,25	150mm x 10m
10,12,20,25	175mm 10m
10,12,20,25	200mm x 10m
10,12,20,25	250mm x 2m
10,12,20,25	300mm x 2m



Cord Dia	Length
12mm	1150m
15mm	750m
20mm	200m
25mm	200m
30mm	160m
40mm	270m
50mm	180m



Thickness	Sheet Size
12mm	2 x 1m
20mm	2 x 1m
25mm	2 x 1m

Miothene 70 / Aerofil 2 / Hydrocell

70kg/m³ density, high performance non absorbent, rot proof, closed cell cross linked polyethylene foam joint filler. Supplied in sheets or cut strips as required. Recommended for use in Water Retaining structures, floor slabs, bridge joints and road expansion joints. Resistant to attack by most acids and alkalis. Complies with DOT Specification for Highway Works Part 3: Clause 1015:91.



Thickness	Sheet Size
12mm	2.44 x 1.22m
20mm	2.44 x 1.22m
25mm	2.44 x 1.22m

Bitumen Impregnated Fibreboard / Flexcell

A low cost, water resistant, bitumen impregnated wood fibre filler board. Minimum 20% bitumen content. Has excellent compression and recovery properties. General purpose joint filler for non-critical joints in concrete slabs and brick wall construction.

Sheet and strip Size : 2.44m long Thickness : 12mm, 20mm, 25mm.

Other sizes are available to order



Thickness	Sheet Size
10mm	2.13 x .914m
12mm	2.13 x .914m
20mm	2.13 x .914m
25mm	2.13 x .914m

Bitumen Bonded Corkboard /Korkpak

A waterproof and durable filler board for critical joints in water retaining, civil engineering and structural expansion joints. Designed to compress and recover without extrusion under most loads encountered during construction. Consists of granulated cork, premixed and securely bonded together with a hot bituminous mixture between two sheets of heavily asphalt saturated paper. Supplied in sheets. Complies with DOT Specification for Highway Works Part 3: Clause 1015:91.



Resin Anchors

Epoxy Resin Anchor

Polyester Resin Anchors

Glass Capsule Resins

Epoxy Resin Anchors



Pack Size

12 x 400ml



Pack Size

12 x 300ml



Size

2.5 ltr

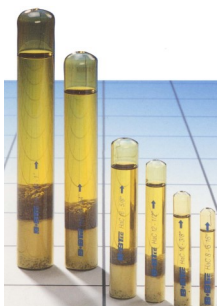


Pack Size

12 x 400ml

Size

2.5 ltr



Size

2.5 ltr

Size

M8 - M30

Norsekem BarFast - Resin Anchor - Epoxy Acrylate

High Performance, cost effective, fast curing two part styrene free chemical anchor system based on unsaturated epoxy acrylate resin. Ideal for stress free fixing of starter bars, studs and bolts in to stone, concrete, brick and blockwork. Also suitable for use with fixing into hollow materials with the use of mesh sleeves. Waterproof and Vibration proof when cured. Supplied with testing and loading data.

Sika AnchorFix 1

AnchorFix-1 is a fast curing, styrene free polyester resin.

Parex TecGrip CAS

An economic ready to use anywhere, Polyester Resin Anchor System. Suitable for anchoring dowel bars, starter bars, studding etc. into concrete, rock, brickwork, other substrates capable of supporting the required load.

Fosroc Lokfix

Lokfix S25 pourable grout in vertical downwards holes or Lokfix P25 in horizontal and overhead holes. The anchor grout should comply with the requirements of BS EN1504-6 and have a compressive strength of 100 MPa at 28 days.

ZetaPro - Polyester Resin Anchor No.1

Economical, high performance, polyester resin. Fast curing two part anchor system. Ideal for use in concrete, brickwork & stone. Suitable for fixing walls ties, starter bars, studs and bolts. Chemically resistant, Waterproof & vibration proof.

Parex Tecgrip H

Part of the Tecgrip range of polyester resin anchor grouts, is used for the fixing of steelbolts and bars into pre-drilled holes within concrete, rock, brickwork, stonework, masonry or other substrates capable of supporting the required load.

Parex Tecgrip V

Two-part polyester grout for anchoring steel bolts, brick ties or other fixings into concrete, stonework, brickwork, masonry and other solid substrates. For downward facing holes angled below horizontal to vertically down. Bolt to hole diametric difference up to 25mm

Glass Hammer Capsules

An Epoxy Acrylate Resin Anchor System. Normally capsule systems do not allow the anchoring of Re-bar as rotation of the bar is needed to properly mix the resin, this design allows the Re-bar or stud to be hammered into the capsule to facilitate mixing. Stress-free system with small spacings and edge distances.

Blow Out Pump



Hole Cleaning Brush



Application Gun 380/400ml



Application Gun 310/400ml





Machine & Plant Protection

Protective Plant Coatings

Plant Storage Coatings

Preventive Cleaning Coatings

Site & Plant Protection Products



Size
25 ltr

Norsekem MetalGuard RPS

Corrosion protector and concrete anti-adherent for construction plant and equipment. Forms a thixotropic film which protects plant from long term storage. Suitable for exterior exposure, UV stable. *Coverage: 20 - 25m² / ltr*



Size
25 ltr

Norsekem PlantGuard CPS

Thixotropic film forming and dewatering coat which can be applied by dipping, spray or brush. Ideal for a protective coating for concrete skip, road forms, manhole, shutter, screed mixers & pumps, forced action pan mixtures. Prevents concrete sticking to the metal and assists with easy cleaning of plant.

Size
25 ltr

Norsekem FormKleen

Biodegradable, low hazard, hard surface cleaner for removing cement films and deposits metal formwork panels on both site and precast factories. Safe to use on tiles, paintwork, metal, rubber and glass.



Size
25kg
238kg

Leyco ZE-KA-FIX

Environmentally friendly, biodegradable, Chloride-free, highly concentrated cleaner of cement and lime scale. Idea for safe use on concrete, metal, rubber, glass and painted surfaces. Does NOT contain hydrochloric acid.



Size
25 ltr
210 ltr

Leyco ZETOLAN-MEK 2

Forms an effective adhesive protective film on the surfaces on which it has been sprayed, preventing the adhesion of residual deposits of concrete and mortar. Deposits can be removed by means of a water jet. As soon as the protective film wears off, a new protective layer of ZETOLAN-MEK 2 can be applied to the wet surface after cleaning.



Size
25 ltr
210 ltr

Leyco ZETOLAN-MEK Plus 2

Forms a protective film on concrete making and processing equipment and machinery as well as on bitumen mixing and processing machines. Adhesion of concrete, mortar, plaster, bitumen and asphalt to metal and painted surfaces is prevented, and machines are protected against oxidation. Immediately after ZETOLAN-MEK Plus 2 has been applied, the protective film becomes effective and is largely waterproof.



Size
25 tr
210 ltr

Leyco ZETOLAN-MEK 3

Forms an effective adhesive protective film on the surfaces on which it has been sprayed, preventing the adhesion of residual deposits of concrete and mortar. Deposits can be removed by means of a water jet. As soon as the protective film wears off, a new protective layer of ZETOLAN-MEK 3 can be applied to the wet surface after cleaning.



Size
210 ltr

Leyco ZETOLAN-MEK Plus 3

Protects construction equipment and machinery, the reverse side of concrete moulds, crane buckets, ready-mix concrete trucks, concrete pumps and road construction equipment from contamination by concrete and mortar. Ideally suited to protect bitumen and asphalt mixing machines.



Cleaning Materials

Degreasing

Brick Cleaning

Tool Cleaners

Cleaning Materials



Size
25 ltr
205 ltr

Norsekem Alfanol HD

A powerful water based penetrating cleaner particularly suited to the removal of grease, diesel and oil from hard surfaces such as concrete, garage floors, drive ways and tarmac roads. For use on asphalt/ tarmac dilute 50/50 with water. It is also suitable for cleaning plant and equipment with a pressure washer. This product is non-caustic, solvent free and Bio-degradable. This product has been used on a number of major road projects.



Size
4 x 5 ltr
25 ltr

Norsekem Brick-Aid

An effective, fast acting, purpose formulated chemical de-scaler and cleaner, for washing down new brickwork and concrete surfaces, and etching concrete. Will remove lime and mortar deposits, efflorescence and rust stains. Suitable for all coloured stocks and standard mortars and safe on most surfaces including paintwork and bituminous materials, but not metal surfaces. Normally diluted with 4-6 parts water in use and applied by brush or spray.



Size
25 ltr

Norsekem Conrem

A much more powerful cleaning fluid than Brick-Aid. Suitable for the removal of residues from accidental spillage's of stronger cements and concrete mixes, particularly from tarmac surfaces. Suitable for etching concrete. Will "dissolve" surface rust from metal surfaces, such as Test cubes, clamps, strong backs etc. Normally diluted with 4-6 parts water in use and applied by brush or spray. Concentration 28% Hydrochloric Acid.



Size
25 ltr

Pieri Suloxi

A water soluble cleaning powder for concretes and plasterings. Thanks to its low acidity and it's remarkable calcium salts dissolving power, *Suloxi* cleans calcium powder, carbonates, scale deposits and efflorescences. It does not form any complex salts with concrete and has no harmful effects on steel reinforcement. The powder is typically mixed in a proportion of 100g per litre or for difficult cases 150g per litre. The diluted Solution is then applied to previously wetted concrete with a brush,



Size
5 ltr
20 ltr

Norsekem Solvkleen

A blend of organic solvents and reactive ingredients for cleaning plant and equipment when in contact with resin (Polyester, Epoxy, Polyurethane) and oil/bitumen based products.



Size
25 ltr

Norsekem Degreasant

A non caustic powerful solvent emulsion designed to remove oil grease, wax, bitumen etc, from concrete stone, wood, steel, terrazzo and many others. It can be diluted with water or spirit based materials.



Size
25 ltr
205 ltr

Leyco ZE-KA-FIX

Environmentally friendly, biodegradable, Chloride-free, highly concentrated cleaner of cement and limescale. Idea for safe use on concrete, metal, rubber, glass and painted surfaces. Does NOT contain hydrochloric acid.



Highways Maintenance

Bedding Mortars

Repair / Patching Mortars

Flowable Micro Concrete

Joint Sealants

Cementitious Grouting

Epoxy Bonding

Curing Membranes

Highway Maintenance



Size

25kg

Parex Highway CA1

Rapid setting bedding mortar designed for trafficking in 30 minutes in summer and 45 minutes in winter, to help reduce construction and road closure times. Specific Highway uses include the bedding of manhole frames and covers, gully grates, stanchion posts etc,. Compatible for use with concrete, brick, and stone substrates. Complies with DTp. Specification HD 27/04
Yield: 12.75 ltrs



Size

25kg

Parex Highway C2

A high early strength bedding mortar designed for trafficking in 2 hours, to help reduce construction and road closure times. Specific Highway uses include the bedding of manhole frames and covers, gully grates, stanchion posts etc. Compatible for use with concrete, brick, and stone substrates. Complies with DTp. Specification HD 27/04
Yield: 12.75 ltrs



Size

25kg

Parex Highway C45

Cement based bedding mortar that reaches 20n/mm² within 45 minutes allowing early opening of roads to traffic. Ideal for the use of bedding manhole frames and other road furniture.
Yield: 12.75 ltrs



Size

25kg

FEBSET 45

Specially formulated patch repair and bedding mortar, based on magnesia-phosphate cement pre-mixed with selected aggregates, which gives controlled, extremely high early strengths in temperatures ranging from -20°C (or lower) up to over 30°. Ideal for cold temperature working.
Yield: 11.6 ltr



Size

25kg

Flexcrete Fastfill

Rapid setting, Portland cement-based structural mortar for the durable repair of concrete which cannot be taken out of service for long periods, or in areas subjected to heavy wear such as roads, runways, bridges, decks, floors and footpaths. Sets in 10 minutes at 20°C yielding a durable, high strength mortar. Complies **DTp Standard** (BD 27/86) **BBA**, **WRAS** and **DWI** approved product.
Yield: 13.3 ltr

Flexcrete Monomix HD

A structural grade repair cement which is high strength and shrinkage compensated for the repair, rendering and profiling of vertical, horizontal and soffit surfaces. Requires only the addition of clean water to form a thixotropic mortar allowing easy high build trowel application, with no inter layer priming. Polymer modified and fibre reinforced which produces a waterproof, dense mortar. It is trafficable which makes it ideal for floor repairs. Complies with **DTp Standard** (BD 27/86)
Yield: 13.1 ltr

Parex Tecfast Concrete

Free Flowing concrete for repairs to accept foot and vehicular traffic. Forming of new pavement areas. Re-instatement of deteriorated pavement areas. Rapid repairs to roadways & runways. Structural support situations. Can be used for thickness of 20mm - 650mm in one application. Meets requirements of the Highways Agency Specification for Highway Works Series 1700.

Yield: 11.5 ltr

Size

25kg



Norsekem Matchpatch - White & grey

A fast setting structural grade repair cement incorporating the latest polymer cement technology. Highly suited for use on damaged, honeycombed and spalled concrete. Colour matching for a fair faced finish is easily achieved by mixing shades of grey and white at different ratios using trial mixes. It is waterproof and with characteristics of low slump, superior adhesion and high build, it can be used in vertical, overhead and other difficult areas of repair without the use of primer, special lightweight aggregates or support. Complies with clause 6 of **DTP Standard** (BD 27/86) Materials for the Repair of Concrete Highway Structures.

Yield : 13.5 ltrs

Size

25kg Grey

25kg White



NORSEKEM
APPLIED CONCRETE TECHNOLOGY

Fosroc Thioflex 600 Gun Grade

Two part, polysulphide sealant, suitable for sealing movement joints in buildings and civil engineering structures, including superstructures, floors, basements and subways. DTP approved for highway works.

Size

2.5ltr



Fosroc Thioflex 600 Pouring Grade

Two part, polysulphide sealant, suitable for sealing movement joints in buildings and civil engineering structures, including superstructures, floors, basements and subways. DTP approved for highway works.

Size

5ltr



Fosroc Colpor 200PF

Pouring Grade sealant for the sealing and maintenance of joints in concrete roads, concrete runways and hard standings. Colpor 200PF is particularly suitable for sealing areas where fuel and oil spillage might occur such as aircraft fuelling areas, oil terminals, garage forecourts, parking and cargo areas.

Size

2 x 5ltr/Pack



SCP Coldseal 200D Concrete Pavement Sealant

A two part modified polyurethane cold applied sealant for joints in concrete paved areas, roads, bridge decks, airfield runways and warehouses, where resistance to attack by fuels and oils is required. Pouring grade only. Complies to BS 5212:1975

Size

5ltr



Highway Maintenance

PAREX®



Size

25kg

Parex CS Grout

High strength flowable grout ideal for grouting gaps and voids under base plates, crane rails, bridge bearings and similar applications, including dowel bars, between precast concrete units and beneath machine bed plates. Its free-flowing characteristics ensure void-free structural support and the material is compliant with Highways Specification Clause 2601.

Yield: 13.25 ltrs

Size

25kg

Fosroc Conbextra BB

Bridge bearing grout that complies with DTP highways specification clause 2601. Can be applied from 10mm - 100mm in one application.

Yield: 13.5 ltrs

PAREX®

Size

10kg

Parex Epoxy Mortar E Fine Grade

Fine grade high strength epoxy mortar designed to provide support in critical situations, including bridge beams, support for stanchion bases, pattress plates, support of precast concrete and steel units. It is also suitable for repairs to concrete beams, columns, floors and walls.

Yield: 5 ltrs

PAREX®

Size

1.5kgkg

4.5kg

Parex Epoxy Adhesive 305

Used for jointing concrete, brickwork, masonry, elastomeric bearings, timber, ceramic tiles, aluminium and steel. Typical uses include bonding of precast units, placing of elastomeric bridge bearings, bonding horizontal fixings and setting frames in precast concrete units.

Yield: 1.5kg = 1ltr - 4.5kg = 3 ltrs



Size

20kg

Pozzament GA High Flow Construction Grout

High Flow Construction Grout has been specifically designed to provide a high strength fluid grout for pouring into and under stanchion plates, machine base plates, parapet rails, for supporting bridge bearings and for filling ducts in post tensioned and pre-stressed structures.

Yield : 12.2 ltrs



Size

25ltr

205ltr

DiChem Tuffacure R90/R90AL

A resin based curing membrane to protect freshly placed or struck concrete from excessive water loss. Tested to DTP Specification for Highways 1992 Clause 1027 (BS 7542, 1992) as 90% efficient. Film will degrade by oxidation and flake off over a period of 28 days, leaving a stain free surface. Also available dyed blue to assist in application. An aluminised version is available for PQ Concrete or where protection from sun is required. Spray Applied.

Coverage: 5 m²/ltr

Size

205ltr

K140 Bitumen Emulsion

40% cationic bitumen emulsion that when cured, forms a thin but uniform film of bitumen on the road surface which gives an adhesive bond between a bituminous overlay and an existing surface.

TERMS AND CONDITIONS

1. Definitions

In these terms the following expressions shall bear the meanings respectively set out against them:

"The Company"	The company named Direct Chemicals Ltd supplying goods to the customer.
"The Customer"	The company, person firm or body contracting with the seller for the purchase of the Goods hereunder.
"The Goods"	Any goods sold to the customer and including without limitation raw materials, processed materials or fabricated products.
"Supply"	Shall include supply by way of sale.

2. General

The following terms and conditions apply to all agreements entered into by the Company for the supply of its goods and services. No variation of or addition to these terms shall be valid unless authorised in writing by a director of the company. Unless otherwise agreed in writing these conditions shall prevail over any other terms and conditions stipulated by the customer in its order or in any negotiations.

3. Quotations

A quotation does not constitute an offer. No contract is concluded until written confirmation by the Company on receipt of order.

4. Performance and Specifications

Any performance estimate is given without commitment and is based upon the Company's past experience only. Whilst every effort is made to ensure the accuracy of the details of our brochure this is subject to a general acceptance of minor errors and omissions.

5. Suitability of Goods

The customer is responsible for the suitability of the goods and materials bought. No warranty is given nor shall any warranty or condition be implied that the goods are reasonable fit and suitable in size, shape, capacity. Quality or otherwise, for the purpose for which they are bought and the Company shall not be under any liability whatsoever due to any goods being unfit or unsuitable.

6. Price

All prices quoted are based on costs ruling at the date of quotation, (excluding VAT). If there are any alterations in these costs the Company reserves the right to alter the prices and will notify the customer in writing thereof, the issuing of a new price list by the Company shall be deemed to be such notice. Thereafter the customer shall have the right to cancel the order on written notice to that effect being given to the Company within seven days of the written notice giving the alteration in price.

7. Payment

The payment terms in the Company's quotation must be strictly adhered to, payable in full within 30 days of the end of month in which the invoice was dated ("the due date"). In the event that payment is not made by the due date, the Company shall be entitled to charge the Customer interest on any overdue amount, at the rate of 4% above The Bank of England base rate, for each month or part month during which the said amounts are or remain overdue. If the customer fails to pay any amounts on the due date, the Company has the right to cancel any contract made with the customer and/or suspend any delivery of goods and materials at the company's option, without prejudice to the company's right to recover damages for any loss sustained by it. The Customer shall not be entitled to retain, deduct or defer any sums whatsoever due to the Company under the Contract on account of any dispute, cross claim or set-off which it might have with the Company.

8. Delivery

The Company shall make all reasonable efforts to meet quoted delivery dates although such dates are not guaranteed.

The Company shall not be liable to the customer for any loss or damage whatsoever suffered or sustained as a result of the Company failing to adhere to such times or dates

Neither shall The Company be liable for any delay in delivery due to any factors beyond the Company's control, which shall include without prejudice to generality of the foregoing, Acts of God, explosion, flood, tempest, fire, accident, war or threat of war, sabotage, civil disturbance or measures of any kind on the part of any Government or Parliamentary Authority, strikes, lock out or any other industrial actions or trade disputes, (whether involving the Company's employees or third parties), power failure shortage of fuels or materials or breakdown in machinery. The Company shall endeavour to fulfil its obligations as soon as is reasonably practicable, taking into account the relevant aforementioned event.

The Company shall be entitled to deliver by single delivery or instalments.

The Customer shall be responsible for unloading and accepting delivery and for the safe custody of the materials.

Delivery to a carrier for the purpose of transmission to the Customer shall be deemed for all purposes of the contract to constitute delivery to the Customer.

9. Transfer of Title to the Materials

Title to the materials shall remain in the Company until full payment of all monies due from the Customer to the Company has been made. Until the title passes, the Customer must keep the materials free from any charge, lien or other encumbrance.

The Customer shall keep the goods and any property into which they are incorporated fully insured with a reputable insurer, and store the materials in such a way that they are easily identifiable as belonging to the Company.

The Company shall be entitled to recover possession of the goods (or any of them) at any time (and for any reason) (and even by severance from other property) and shall be entitled without restriction to lawfully enter upon any of the Customer's premises for that purpose. The Customer shall pay all costs and expenses incurred by the Company in exercising this right.

10. Risk

The risk of damage to any goods shall pass to the Customer on delivery.

11. Faulty Goods and Limitation on Liability

Whilst all reasonable care is taken in compiling technical data on the Company's products all recommendations or suggestions regarding the use of such products are made without guarantee since the conditions of use are beyond the control of the Company. It is the Customer's responsibility to satisfy that each product is fit for the purpose for which it intends to use it and that the actual conditions of use are suitable.

Notwithstanding that it will not be responsible for any defects caused or sustained as a result of variations in the Customer's original specifications, the Company warrants that its goods will be of satisfactory quality and that all services it provides by it will be performed with reasonable skill and care. Accordingly, the Company will replace any goods which are defective, damaged or faulty at its own expense (provided that they have not been tampered with or subjected to improper treatment by the Customer) if the Customer gives written notice of the faults and defects within seven days of delivery. Goods to be replaced must be returned to the Company properly packed and carriage paid before any replacement will be issued. Goods so returned become the property of the Company.

Save as hereinbefore provided the Company shall not be liable to compensate or indemnify the Customer for any loss or damage (whether direct, indirect consequential or otherwise) to or caused by or sustained as a result of the goods or services provided.

Notwithstanding anything hereinbefore contained, the Company is not seeking to exclude or restrict its potential liability for damage in the nature of death or personal injury caused by its negligence or that of its servants or agents. However, the Customer shall indemnify the Company against all actions, claims, proceedings, losses, costs, damages and expenses whatsoever arising in respect of loss of life to or personal injury suffered by any person in connection with the Contract where that loss of life or personal injury is caused by the negligence of the Customer or of its servants or agents.

12. Termination

The Company reserves the right to terminate this order upon giving reasonable written notice to the Customer. The Company further reserves the right to terminate this order if sums due and payable by the Customer under previous orders remains outstanding.

13. Breach and Customers Insolvency

If the Customer shall default in or commit any breach of any of its obligations to the Company or if any distress or execution shall be levied upon the Customer or if the Customer shall enter into any negotiations for arrangement or composition with its creditors or commit any act of bankruptcy or if any petition in bankruptcy shall be presented against it or, if the Customer is a corporate body, any resolution is proposed or petition presented to wind up the Customer or if a receiver of the Customer's assets or undertaking or any part thereof shall be appointed or if the Customer shall be deemed to be unable to pay its debts as they fall due the Company shall be entitled to determine forthwith any contract then subsisting (whether or not these Conditions apply to such contract) without prejudice to any other claim or right the Company might make or exercise. In such circumstances the Company shall have the right to suspend or cancel further deliveries, and payment for all Material already supplied, provided or ordered shall become due immediately.

14. Set-Off

The Company shall be at liberty to set off from sums due to the Customer whether under a contract or otherwise any lawful set-off or counterclaim to which the Company may at any time be entitled and to withhold sums due to the Customer in the event of any claim against or dispute with the Customer whether under a contract or otherwise.

15. Proper Law

All contracts to which these Conditions apply shall be governed by and construed in accordance with English Law. The parties hereto agree to submit to the exclusive jurisdiction of the English courts.

16. Returns and Special Order Materials

Goods maybe returned within 5 working days in original packing and subject to prior agreement, but will be subject to a handling charge. No cement based materials can be returned. Special order / Non-stock items are non-returnable.



pozament[®]



PAREX



Adomast 



BASF
The Chemical Company

GRACE

 **Ronacrete**



LeycoChem
LEYDE

NORSEKEM
APPLIED CONCRETE TECHNOLOGY



Direct Chemicals Ltd

**Unit 6, Stokes Farm,
Binfield Road,
Wokingham, Berkshire,
RG40 5PR**

0118 989 2666

sales@dichem.co.uk