



Resin Anchors

Epoxy Resin Anchor

Polyester Resin Anchors

Glass Capsule Resins

Epoxy Resin Anchors



Pack Size

12 x 400ml



Pack Size

12 x 300ml



Size

2.5 ltr

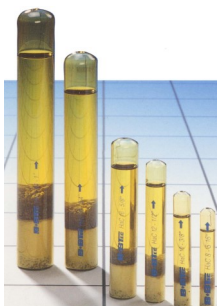


Pack Size

12 x 400ml

Size

2.5 ltr



Size

2.5 ltr

Size

M8 - M30

Norsekem BarFast - Resin Anchor - Epoxy Acrylate

High Performance, cost effective, fast curing two part styrene free chemical anchor system based on unsaturated epoxy acrylate resin. Ideal for stress free fixing of starter bars, studs and bolts in to stone, concrete, brick and blockwork. Also suitable for use with fixing into hollow materials with the use of mesh sleeves. Waterproof and Vibration proof when cured. Supplied with testing and loading data.

Sika AnchorFix 1

AnchorFix-1 is a fast curing, styrene free polyester resin.

Parex TecGrip CAS

An economic ready to use anywhere, Polyester Resin Anchor System. Suitable for anchoring dowel bars, starter bars, studding etc. into concrete, rock, brickwork, other substrates capable of supporting the required load.

Fosroc Lokfix

Lokfix S25 pourable grout in vertical downwards holes or Lokfix P25 in horizontal and overhead holes. The anchor grout should comply with the requirements of BS EN1504-6 and have a compressive strength of 100 MPa at 28 days.

ZetaPro - Polyester Resin Anchor No.1

Economical, high performance, polyester resin. Fast curing two part anchor system. Ideal for use in concrete, brickwork & stone. Suitable for fixing walls ties, starter bars, studs and bolts. Chemically resistant, Waterproof & vibration proof.

Parex Tecgrip H

Part of the Tecgrip range of polyester resin anchor grouts, is used for the fixing of steelbolts and bars into pre-drilled holes within concrete, rock, brickwork, stonework, masonry or other substrates capable of supporting the required load.

Parex Tecgrip V

Two-part polyester grout for anchoring steel bolts, brick ties or other fixings into concrete, stonework, brickwork, masonry and other solid substrates. For downward facing holes angled below horizontal to vertically down. Bolt to hole diametric difference up to 25mm

Glass Hammer Capsules

An Epoxy Acrylate Resin Anchor System. Normally capsule systems do not allow the anchoring of Re-bar as rotation of the bar is needed to properly mix the resin, this design allows the Re-bar or stud to be hammered into the capsule to facilitate mixing. Stress-free system with small spacings and edge distances.

Blow Out Pump



Hole Cleaning Brush



Application Gun 380/400ml



Application Gun 310/400ml

