



Waterproofing Systems

Liquid Applied Waterproofing Membranes

Sheet Membranes

Drainage Sheet Membranes

Active Waterstops

PVC Waterstops

Injectable Waterstops

Cementitious Waterproofing

Crack & Joint Waterproofing

DPC Injection

Waterplugs

Liquid Applied Waterproof Membranes



RIW

Size
4 x 5ltr
25ltr
205ltr

RIW LAC

Typically used as a damp proof membrane to ground floors, as a vapour barrier behind cladding and for tanking of basements. It is also suitable for waterproofing foundation walls, ducts, lintels, columns, beams and similar structures at, above and below ground level. May also be applied to the internal face of external walls above ground level to prevent the penetration of moisture. The membrane can then be plastered or dry lined when dry.
Coverage: 2m² / ltr / coat



RIW

Size
5ltr
20ltr

RIW Toughseal

Typically used to provide a water and water vapour proof barrier, or to give protection against abrasion, fresh and salt water, carbon dioxide, alkalis and dilute mineral acids. It is resistant to U.V. light and atmospheric attack. Suitable for raised access floors, ground floor slabs, swimming pool wet areas and shower areas, plant rooms, sewage plants and marine applications. When dressed with a suitable aggregate it will provide a slip retardant wearing surface or a waterproof key for tile bedding or renders.
Coverage: 4m² / ltr / coat



RIW

Size
6kg / Flexiseal
25kg / Flexiseal
5ltr / Flexiseal Primer
20ltr / Flexiseal Primer

RIW Flexiseal

Used in all situations where a high performance tanking or damp proof membrane is required. Suitable substrates include concrete, masonry, steel, asbestos cement, timber, sprayed polyurethane foams and expanded polystyrene such as ICF systems. *Flexiseal primer* is used to seal porous or contaminated surfaces, and to aid adhesion of the membrane.
Coverage: 2m² / ltr / coat
Primer Coverage : 8m² / ltr



RIW

Size
20ltr

RIW Heviseal

Protective coating to concrete or steel superstructures or other structures such as retaining walls, plinths etc., when the membrane is to be left exposed for a long period of time prior to cladding. Heviseal is suitable as a waterproof membrane, for periodic maintenance onto existing flat roof areas. The membrane can also be used on parapet walls, gutters, planters, ponds and water storage tanks
Coverage: 1.5m² / ltr / coat



RIW

Size
20ltr

RIW Liquid GM

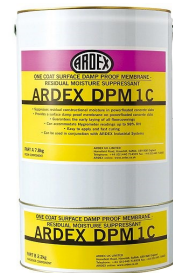
Single component water based compound, formulated on styrene-butadiene co-polymer. Liquid GM is an elastomeric rubber like coating, which cures to form a tough, flexible material; acting as an effective barrier to the passage of Methane, Carbon Dioxide, Radon and other harmful gases. Liquid GM is a specially designed gas protection membrane, developed to provide high performance gas proofing and a barrier to water and water vapour.
Coverage: 0.5 - 0.7m² / ltr / coat

Liquid Applied Waterproofing Membranes

ARDEX DPM 1C / Rapid

Specifically developed to provide either a DPM, or to suppress residual moisture in concrete slabs and cement/sand screeds which are well compacted and sound, where readings of up to 98% RH are measured. Can be used as a damp proof membrane that deals with damp concrete where a structural damp proof membrane is not present or is ineffective, with the risk of rising damp. Rapid Drying version also available for fast track work.
Coverage: Up to 2.5m² / kg

Product	Size
Ardex DPM 1C	6kg
Ardex DPM 1C	10kg
Ardex DPM 1C	25kg
Ardex Rapid DPM	3kg
Ardex Rapid DPM	6kg
Ardex Rapid DPM	10kg



Sika Black Bitumen Paint

General purpose black bitumen paint that can be applied to most substrates, including iron and steel structures, metal fabrications, castings, asbestos cement sheeting, and structural concrete.
Coverage: >5m² / ltr / coat

Size
4 x 5ltr
25ltr



Fosroc Proofex LM

Two component bituminous liquid membrane for waterproofing of underground structures and intricate details. Resists hydrostatic head of up to 70 meters.
Coverage: 4 - 8kg / m²

Size
28kg



Grace Bituthene LM

Two part, elastomeric liquid applied detailing compound. Ideal for use around irregular profiles where liquid applied waterproofing is necessary to ensure watertight continuity.
Coverage: 2.28m² @ 2.5mm thickness

Size
5.7ltr



Black Jack 908 DPM

Rubber/ bitumen damp proof liquid membrane with excellent adhesion which dries to a tough black seamless, flexible waterproof and vapour proof membrane. Ideal for damp proofing floors and walls, even externally below ground level.
Coverage: 2m² / ltr / coat

Size
4 x 5ltr
25ltr



ARDEX WPM 200

Developed to provide a water and water vapour barrier, or priming layer to concrete, screeded, rendered or masonry surfaces, steel and other vertical as well as horizontal hard surfaces. Ideal for use on raised access floors, ground floor slabs, swimming pool surrounds and shower areas, plant rooms, sewage plants and marine applications. When dressed with a suitable aggregate it will provide a reduced slip wearing surface for pedestrian traffic.
Coverage: 4.8m² / ltr / coat

Size
5ltr
20ltr



Sheet Membranes



Product	Size
SikaProof A-08	1 & 2m x 25m
SikaProof A-12	1 & 2m x 25m

SikaProof® A-08 / A-12

Fully and permanently bonded, self-adhesive, composite sheet membrane waterproofing system for reinforced concrete of the main structure. SikaProof® A-08/-12 is cold applied and pre-applied, before the steel reinforcement is fixed and the concrete is poured. Two Grades Available.



Product	Size
A-08 Edge	1m x 25m
A-12 Edge	1m x 20m

SikaProof® A-08 / A-12 Edge

L Shaped 200mm x 800mm cold applied, self adhesive composite sheet membrane waterproofing system. For easy application of perimeter edges, corners and connection. Cold applied system. Two grades available.

SikaProof® Ancillary Products

SikaProof® Patch 200B - External membrane patching tape for sealing any local damage or penetrations.

SikaProof® FixTape 50 - For fixing and repairing around details and penetrations.

SikaProof® MetalSheet - To Create special details, such as pile heads.

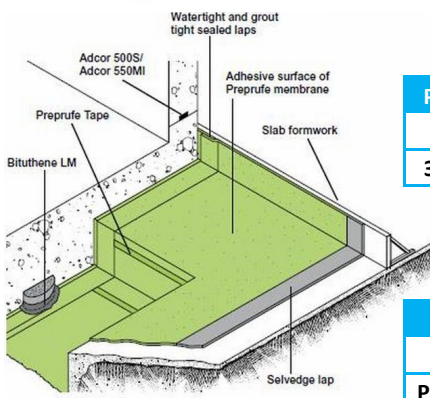
Product	Size
Sika Patch 200B	200mm x 20m
Sika FixTape 50	50mm x 20m
Sika MetalSheet	20m



Product	Size
160R	1.2m x 35m
160Plus	1.17m x 31m

Preprufe 160R / 160 Plus

Pre-applied waterproofing membrane, used typically with concrete slab sections up to 350mm thickness and vertically with single and double sided formwork systems. Methane, carbon dioxide and radon gas resistant. BBA Certified.



Product	Size
300R	1.2m x 30m
300Plus	1.17m x 31m

Preprufe 300R / 300 Plus

Pre-applied waterproofing membrane, used typically with concrete slab sections up to 350mm thickness horizontally, Methane, carbon dioxide and radon gas resistant. BBA Certified. This material has superior damage resistance to on site metalwork and site plant.

Product	Size
800PA	1.2m 35m
PRIMER W2	5ltr
Primer SC1	20ltr

Preprufe 800PA

Cold applied, self adhesive membrane that can be applied to cementitious and metal substrates. Ideal for new build base-ment walls, below ground car parks, underground RC reservoirs and tanks. Offers protection against radon and methane gas.



Product	Size
PrePrufe Tape LT	100mm x 15m
Bituthene LM	5.7ltr
Lap Roller	Each

Preprufe Ancillary Products

Preprufe Tape - Flexible, jointing tape on overlaps.

Bituthene LM - used as a detailing liquid membrane around penetrations and corner transitions.

Bituthene Lap Roller - Lap roller for smoothing out overlaps and jointing.

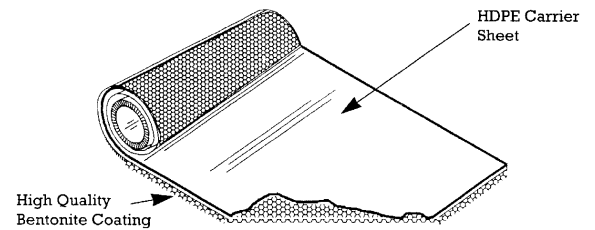


Dual Seal Bentonite/HDPE Membrane

Dual Seal is a high performance self swelling, self healing waterproofing membrane comprising of a thick, high density polyethylene sheet laminated to 4kg/m² of quality Bentonite granules. It has many advantages over traditional Bitumen membranes.

- Resistant to 46m head of water pressure
- Prevents water tracking between membrane and concrete
- Can be applied to wet/green concrete
- Non-skilled installation
- Can be installed in damp conditions
- Surface does not require priming
- No protection boards needed

Product	Size
Dual Seal	1.22m 7.32m

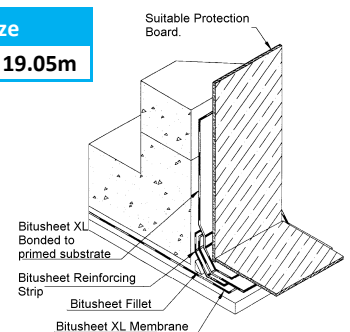


SCP Bitusheet XL Self Bonding Waterproof Membrane

A self bonding polymer modified bitumen which is covered on one side by a two ply cross laminated polythene film and on the other by a release sheet which is removed prior to bonding the sheet to a suitably prepared substrate. The membrane is easily applied by roller pressure and incorporates a 50mm seldedge on one side to form homogenous overlap joints. Suitable for vertical & horizontal damp proof tanking below ground structures, subways, and retaining walls.

BBA Certified.

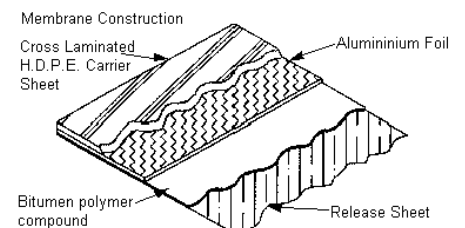
Product	Size
Bitusheet XL	1.05m x 19.05m



SCP Bitusheet Gas Barrier Membrane

A high density polyethylene sheeting laminated to aluminium foil and coated with a self adhesive bitumen/polymer compound. Designed for use as a cold applied flexible membrane to provide a barrier to Methane and Radon gases. The membrane incorporates a 50mm seldedge on one side to form homogenous overlap joints. May be laid onto concrete blinding or directly onto compacted sand blinding with the longitudinal and end overlaps sealed.

Product	Size
SCP Gas Barrier	1.05m x 28.6m



Ancillary Membrane Products

SCP Bitusheet Primer

One part solvented bituminous solution for brush or spray application. Seals porous surfaces to promote adhesion of Bitusheet membranes and flashings. Allow to dry (½ to 2 hours) before applying membrane. Coverage :- 5-7m² per litre.

Product	Size
Bitusheet Primer	5ltr

SCP Bituflex Fillet

A preformed triangular foam section. Used at angles between walls and slabs, fixed with Bitumen Mastic and then covered with 300mm reinforcing strip.

Size :- 48mm x 48mm in 1 metre lengths.

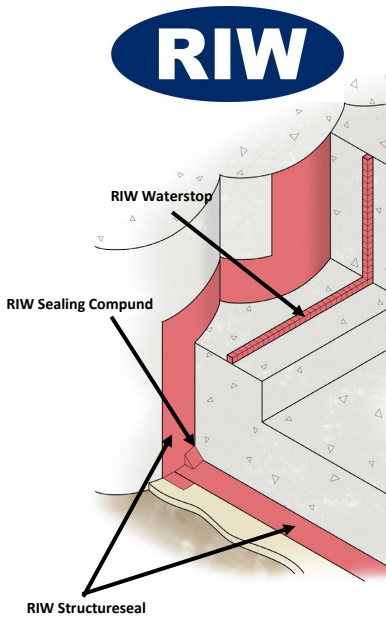
Product	Size
Bituflex Fillet	1mtr

SCP Bitusheet Reinforcing Tape & Double Sided Tape

A cross laminated high density polyethylene film coated with Bitumen Polymer Adhesive and faced with a release sheet. Used to reinforce all external and internal edges, intersections and roof expansion joints. Double sided for fixing protection boards.

Product	Size
Bitusheet R.Tape	150mm x 20mtr
Bitusheet R.Tape	300mm x 20mtr
Double S/Tape	100mm x 10mtr

Sheet Membranes



Size
5m x 1.1m Roll

Product	Size
RIW Waterstop	6 x 5m rolls
S / Compound	25kg
RIW Granules	20kg
RIW Washers	500pp
RIW Staple Gun	Each
RIW Staples	2500pp

RIW Structureseal

Designed for below ground vertical and horizontal structural foundation surfaces. Typical applications, include backfilled concrete walls, structural slabs and boundary line construction. Boundary line construction applications, include secant and contiguous piling, skin wall, metal sheet piling, sprayed concrete finishes and stabilized earth retention walls. **BBA Certified.**

RIW Structureseal Ancillary Products

RIW Waterstop - a flexible, expanding bentonite - based waterstop, for use in non - moving concrete construction joints.

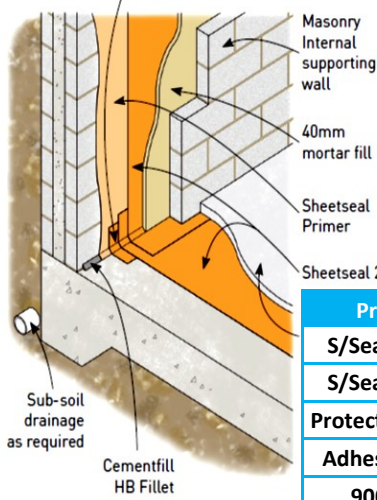
RIW Sealing Compound - used as a detailing mastic around penetrations and corner transitions.

RIW Granules - chemically treated sodium bentonite granules, which swell upon contact with water.

RIW Washers - a 'soft-washer' fastener, for securing the RIW Structureseal to concrete.

RIW Staple Gun - a manual stapler

Sheetseal 226 reinforcing strip x 300 wide



Size
19.05 x 1.05m

Product	Size
S/Seal Primer	5ltr
S/Seal Primer	25ltr
Protection Board	.9m x 2.02m
Adhesive Tape	150mm x15m
9000DPC	Various

RIW Sheetseal 226

Cold applied, high density polyethylene film, coated with a bitumen / rubber self adhesive layer. Typically used to provide a water and water vapour barrier in all forms of construction, particularly where large unobstructed areas are to be treated. Typical installations include ground floor waterproofing, retaining walls and similar uncluttered surfaces. **BBA Certified**

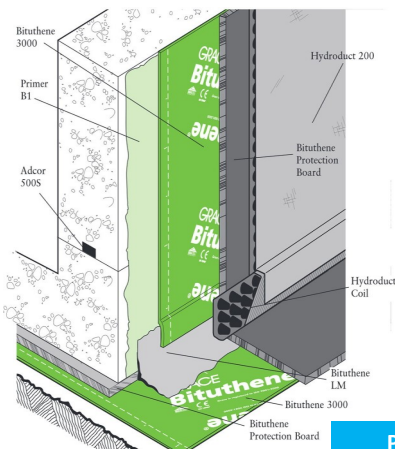
RIW Sheetseal 226 Ancillary Products

RIW Sheetseal Primer - Primer to promote adhesion

RIW Protection Board - 3mm bitumen impregnated protection board.

RIW Adhesive Tape - 150mm wide double sided tape

RIW Sheetseal 9000 DPC - Range of high performance polymeric dpc's, and pre-formed cavity trays.



Size
20m x 1m roll

Size
20m x 1m roll

Product	Size
B1 Primer	5ltr & 25ltr
S2 Primer	5 & 20ltr
Protection Board	2m x 1m
Bituthene LM	5.7ltr

Bituthene 3000

Self-adhesive membrane suitable for waterproofing basements and substructures. Capable of resisting a hydrostatic head when fully supported. Cold applied, flexible, preformed waterproof membrane. **BBA Certified.**

Bituthene 8000

Advanced, self-adhesive water and vapour proof membrane for sub-structures. Gas resistant to methane, carbon dioxide and radon gasses. Fast and easy application. **BBA Certified.**

Bituthene Ancillary Products

B1 Primer - Primer to promote adhesion (use with 3000)

S2 Primer - Primer to promote adhesion (use with 8000)

Protection Board - 3mm bitumen impregnated protection board.

Bituthene LM - Used for detailing works



Drainage Sheet Membranes

Plaster Base

Can be installed on internal walls and vaulted ceilings above or below ground level. The substrate remains visible through the clear membrane for precise fixing. It is suitable for use with sand and cement renders and most lightweight and renovating plasters. Plasterboard can be fixed directly to the membrane using the 'Dot and Dab' method.

Size
2m x 20m

Plaster Mesh

Double layered cavity drain membrane comprising a studded HDPE layer bonded to a HDPE twist mesh layer which forms a key for most common plasters and renders. Plasterboard can be fixed directly to the membrane using the "dot and dab" method. Plaster Mesh can be fixed directly to existing wall finishes without the need for extensive hacking off or preparation.

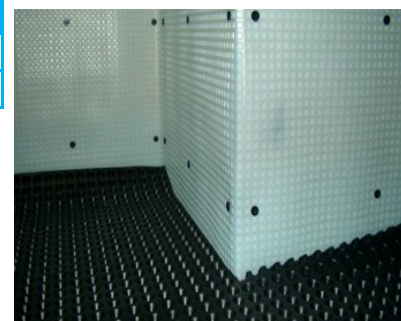
Size
2m x 20m



P5 & P8 Cavity Drain

(HDPE) cavity drain membrane which is impermeable and resistant to the usual chemicals in building construction. Tough but pliable and can be bent around corners and projections without the risk of breaking even in very low temperatures.

Product	Size
P5	2.07 x 20m
P8	2 x 20mtr



P20 Cavity Drain

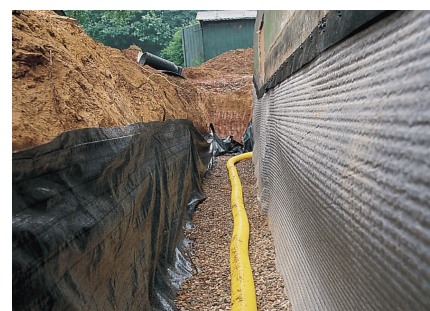
High Capacity drainage membrane recommended for use on all floor applications below ground due to its ability to control free flowing water. The deep stud profile is designed to resist blockages caused by lime stone deposits. Suitable for use as a radon barrier.

Size
2m x 20mtr

Double Drain

Double Drain can be fixed vertically or horizontally to suit the application. It must be installed over a primary membrane, such as a Vapour Membrane. Fix Double Drain along the top edge above the primary membrane, with Double Drain cramps at 250mm centres. Overlap vertical joints by 500mm and horizontal joints by 150mm. Filter fabric can be pulled back for successive overlap of the membrane and filter fabric.

Size
2m x 15mtr



Aqua Pump Pro is specially designed for the removal of ground water from basement cavity drain membrane systems. Comprising polyethylene sump, locking access cover and a powerful submersible pump.

Size
240v

Aqua Pump Pro Battery Back Up system comprises a polyethylene sump, locking access cover, powerful submersible pump, 24v back up pump and control panel.

Size
N/A



Drainage Membrane Ancillary Products

Brick Plugs - Fixing Plugs for P5, P8 & P20 Cavity Drains Systems.

Plaster Plugs - Fixing plug for Plaster Membrane.

Sealing Tape - For sealing between Cavity Drain Sheets.

Sealing Rope - For sealing around fixing plugs.

Overtape - Sealing over external jointing of Plaster Drain.

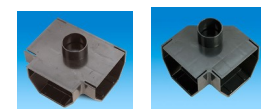
Corner Strip - Preformed corner for Cavity Drain Systems.

X Cramps - Top Edge fixing Cramp for Double Drain Systems.

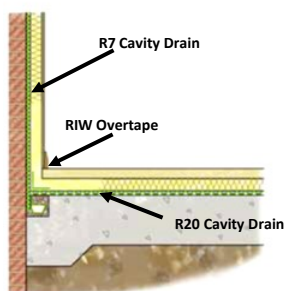
Top Edge Strip - Top Edge strip for Double Drain Systems.

Aqua Channel - Range of Outlets for water flow Control and cleaning.

Product	Size
Brick Plugs	100pp
Plaster Plugs	500pp
Sealing Tape	5no.x 20m Rolls
Sealing Rope	10no. x 20m Rolls
Overtape	115mm x 25m
Corner Strip	150mm x 10m
X Cramps	60pp
Top Edge Strip	2mtr
Aqua Channel	Various



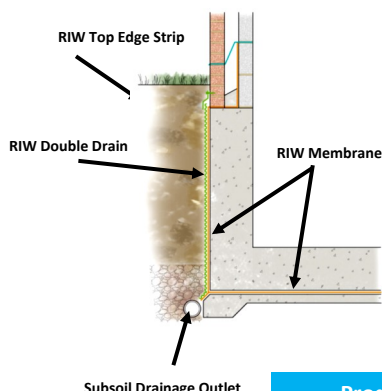
Drainage Sheet Membranes



Product	Size
R7	2m x 20mtr
R20	2m x 20mtr

RIW Cavity Drainage Membrane R7/ P20

Internal tanking cavity drainage membrane system used to collect water entering the basements and sub-structures and channel it to a sump or collection point for disposal. RIW Cavity Drainage Membrane is a 1mm thick high density polyethylene drain board with 7mm or 20mm studs used in situations where site conditions or structural design make it difficult or impossible to use traditional tanking methods.



Size
2m x 15mtr

RIW Double Drain

Cold applied, impermeable, high density polyethylene profiled sheet incorporating a permeable geotextile filter fabric. It is designed to prevent ground water reaching a structure and to enhance the performance of the waterproof membranes. Double Drain can be used in conjunction with a primary waterproofing system or on its own to isolate the structure from the surrounding soil and relieve hydrostatic pressure, by promoting the flow of ground water away from the face of the structure to land drainage.



Product	Size
RIW Fixing Plug	100no. pp
RIW Sealing Tape	20mtr
RIW Sealing Rope	5mtr
RIW Overtape	10mtr
RIW 9000DPC	Various
RIW X Cramps	60pp
RIW Top Edge Strip	2m
RIW Channel	Various
RIW Aqua Pump	See Data

Drainage Membrane Ancillary Products

RIW Fixing Plugs - Fixing Plugs for R7 & R20 Cavity Drains Systems.

RIW Sealing Tape - For sealing between Cavity Drain Sheets.

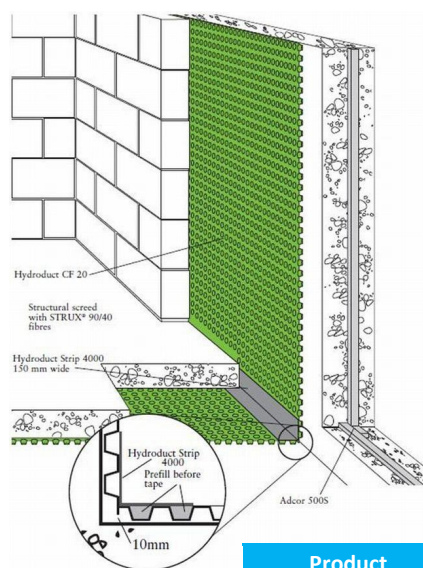
RIW Sealing Rope - For sealing around fixing plugs.

RIW Overtape - Sealing over external jointing of Plaster Drain

RIW Sheetseal 9000DPC - Wall to floor jointing tape

RIW X Cramps - Top Edge fixing Cramp for Double Drain System

RIW Top Edge Strip - Top Edge strip for Double Drain Systems



Size
CF20 - 2m x 20m
CF08 - 2.4m x 20m

Hydroduct® CF 20 & CF 08

Highly efficient, cost effective drained cavity former. When installed against the internal face of concrete floors and walls Hydroduct CF will provide a continuous drainage path that must link with the site internal drainage system. 20mm stud for horizontally & vertically. 8mm stud for cavities vertically in lower risk applications.

Hydroduct® CF Ancillary Products

Servitape 4000 - Joint Tape for corners and overlaps.

Hydroduct Channel - High flow capacity outlet for drainage membrane.

Product	Size
Servitape 4000	10m
Hydroduct Channel	2m



Active Waterstops

BASF Masterseal 910

MasterSeal 910 Waterbar is suitable for all construction joints subject to hydrostatic pressure, on one or both sides. MasterSeal 910 provide simple but efficient waterproofing of construction joints. Movements in the joint, e.g. by shrinkage or settlement in the substrate, are taken up by the elastic profile of the MasterSeal 910 Waterbar.

MasterSeal 910 is a component of the BASF pilecap waterproofing and watertight jointing systems. **Masterseal 912w** to be used in conjunction when installing Masterseal 910.

SikaSwell Range

Swellable waterstop which swells in contact with water. Ideal for use in pre-cast concrete, tunnel segments and around all types of penetrations through concrete. Two different profile size's : 20mm x 5mm (**2005**) 20mm x 10mm (**2010**)

SikaSwell S2

One part polyurethane sealant which swells on contact with water. Ideal for sealing around pipe and steel work penetrations through walls and floor slabs. Permanently water resistant.

Hydrotite CJ- Type (Construction Joints)

Hydrotite is the original hydrophilic rubber sealing material used extensively in the construction industry to seal joints between precast concrete units, steel and other materials. **Hydrotite CJ-type** has been specifically developed as an effective, simple and economical sealing material for site formed construction joints, wall / slab interfaces, kicker / wall joints and where pipes or other fittings pass through concrete.

WRAS approved product.

De Neef Swellseal 3V

Expansive hydrophilic waterproofing strip for sealing joints in tunnel segments, underground precast elements, horizontal and vertical construction joints and concrete to steel joints. Swelling capacity of up to 3 times the original volume when in contact with water. Fix Using **DeNeef MS Fixer**

De Neef Swellseal Mastic

A polyurethane based sealant which swells in contact with water. Easily applied with a barrel gun in beads from 5-20mm wide. Ideal for use in areas where normal water stops would be difficult to apply:- daywork joints, cracks, PVC waterstops, between different construction materials, pipe entries, and sealing of precast concrete pipes and culverts.

De Neef Bentorub+

A sodium bentonite / butyl rubber strip for the waterproofing of construction joints and cold joints in concrete. The system is ecological, user friendly and will remain permanently active within the joint for the expected life of the structure and will withstand a hydrostatic pressure of up to 80m head. Has a delayed expansion time of 48 hours so it can be placed in all weathers. Must have at least 70mm cover on all sides for the concrete to withstand the expansion pressures. Fast and easy to install either by Bentogluie onto a preformed rebate or shot firing through the Bento-cage. **BBA** and **WRAS** approved.

Size
910 x 10mtr roll
912w x 310ml Cartridge



Size
2005 = 10m Roll
2010 = 5m Roll



Size
600cc Sausage



Size
10m Roll
1ltr Adhesive



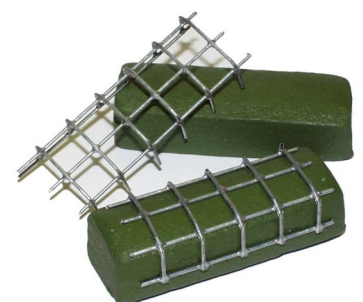
Size
15m Roll
MS Fixer 400ml



Size
310ml



Size
5m Roll
30m Fixing Cage
Bentostick 5kg
Bentogluie 12 xx310ml



Active Waterstops



Size
SW10 = 10m roll
SW20 = 5m roll

Size
310cc Cartridge
600cc Sausage

Size
380cc Cartridge

Fosroc Supercast SW Range

The range consists of swellable waterstops offering different size sections for different applications. Supercast SW10 & SW20 are suitable for use with potable water.

Fosroc Supercast SWX

Grey, elastomeric water-swellable gun applied paste suitable for detailing work or to fill underdulations and surface holes in the concrete beneath the waterstop.

Fosroc Supercast SW adhesive

Gun applied adhesive suitable for locating Supercast SW10 & SW20.



Size
6 x 5m Rolls

Size
6 x 5m Rolls

Adcor 500s

Swellable polymer/ butyl rubber waterstop strip that expands in contact with water. When fully encapsulated by poured concrete, the expansive forces form a seal against concrete faces. The seal resists hydrostatic pressure, stopping water from entering the structure.

RIW Waterstop

Hydrophilic waterstop, a sodium bentonite based material, designed to stop water infiltration through insitu concrete construction joints. Sodium bentonite swells when in contact with water, forming an impermeable barrier.

BASF MasterSeal Waterproofing system



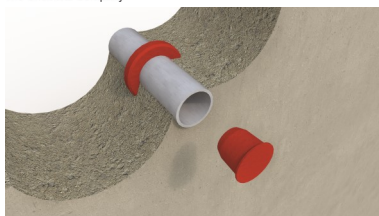
Size
910 x 10mtr roll
912w x 310ml Cartridge

BASF Masterseal 910

MasterSeal 910 Waterbar is suitable for all construction joints subject to hydrostatic pressure, on one or both sides. MasterSeal 910 provide simple but efficient waterproofing of construction joints. Movements in the joint, e.g. by shrinkage or settlement in the substrate, are taken up by the elastic profile of the MasterSeal 910 Waterbar.

MasterSeal 910 is a component of the BASF pilecap waterproofing and watertight jointing systems.

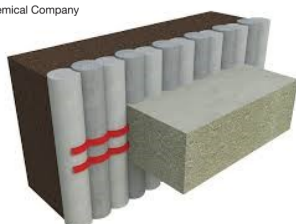
Masterseal 912w to be used in conjunction when installing Masterseal 910.



Size
925 x 120 piece kit

MasterInject 925 - (Formally MasterInject 625)

The MasterInject 925 system for tie holes consists of two elements, a swelling plug and a swelling ring. Both of these elements are made from the same acrylate technology as MasterSeal 910 swellable gasket thus having the same properties.



Size
590 x 5kg tin

MasterSeal 590

MasterSeal 590, when mixed with clean water, provides a ready to use ultra rapid setting durable plugging mortar for active water leaks in concrete and masonry. The material expands as it cures to form a watertight seal with similar characteristics to concrete.

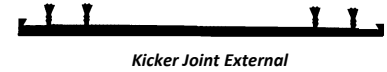
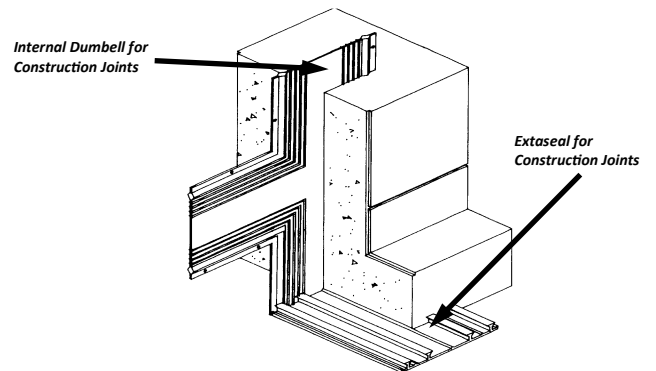
SCP Extaseal External P.V.C Waterstop

A high performance, heavy duty profile waterstop specifically developed to seal joints in concrete structures at the outside surface thus protecting the reinforcing steel against corrosion attack as well as providing a watertight seal. Independently tested to provide a totally effective water barrier up to 27m head of water. Conforms to **DWI water quality regulation 25(1)(c)**

WRAS approved product.

Joint Type	Roll Size
Expansion	200mm x 15mtr
Expansion	250mm x 10mtr

External PVC Waterstop



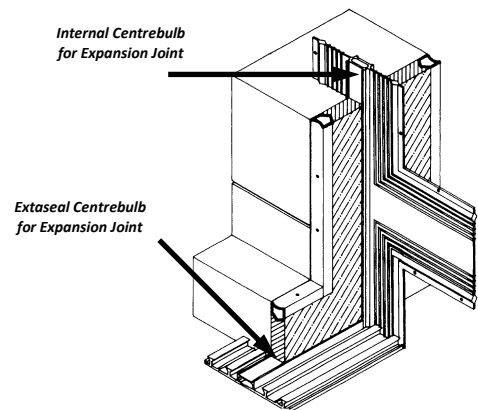
SCP Flat Internal P.V.C. Waterstop

Specifically developed, with their unique rib and end profiles to provide a totally effective water barrier when cast centrally within concrete wall and floor joints. Independently tested to provide a totally effective water barrier up to 27m head of water. Conforms to **DWI water quality regulation 25(1)(c)**

WRAS approved product

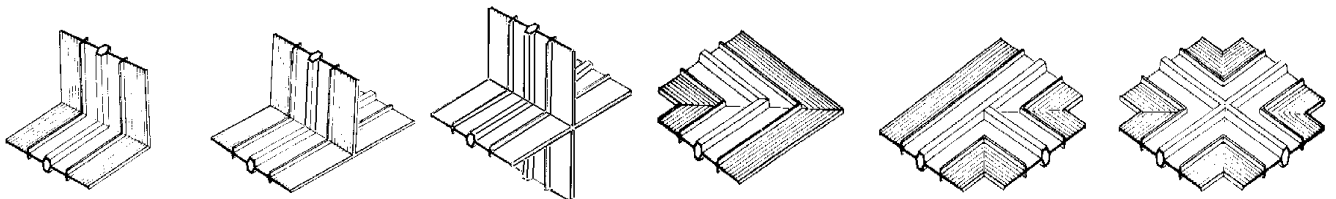
Joint Type	Roll Size
Expansion	150mm x 20mtr
Expansion	200mm x 15mtr
Expansion	250mm x 12mtr

Internal PVC Waterstop

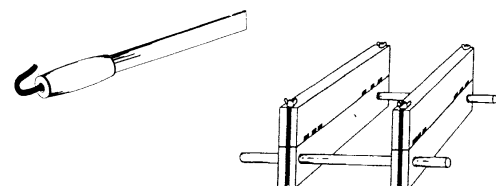


Waterstop Junction Pieces

A full range of junction pieces are available for both expansion and construction joint type Waterstops.



Jointing Jig & Hot Knife allow the correct jointing of the Waterstops. The two pieces to be joined are aligned and then clamped down, the hot knife is then inserted between the two pieces until the plastic melts, remove the knife and push the two ends together, then allow to cool.



Injectable Waterstops



Size
25kg

De Neef HA Cut

One component, low viscosity, hydrophobic, aqua-reactive, rigid polyurethane injection grout for cutting off gushing water leaks with a high flow rate and/or high hydrostatic pressure. Also ideal for soil stabilisation and anchoring in gravel. Cure to a tough, rigid, closed cell polyurethane foam.



Size
21.3kg A+B
42.6kg A+B

Sika Injection 201

Low viscous, elastic and solvent-free polyurethane injection resin. In contact with water, a uniform, closed and therefore watertight pore structure forms, which is elastic and flexible. Ideal for permanent watertight sealing with some flexibility to absorb limited movement, in dry, damp or water-bearing cracks and joints



Size
22kg A+B
46kg A+B

Sika Injection 101

Low viscous, fast foaming and solvent-free water-reactive polyurethane injection foam resin, which cure to a dense flexible foam with a fine cellular structure. Used for temporary waterstopping of high water intrusions in cracks, joint and cavities in concrete, brickwork and natural stone. The free foaming expansion in contact with water is up to 40 times. To achieve permanent watertight crack sealing Sika Injection 201 or 203 should be injected subsequently.



Size
Various

Injection Packers

Direct Chemicals are able to supply a range of both metal and plastic packers to suit your requirements. Supplied in various sizes and diameters.

Please contact the office for details.



Product
30m Kit

De Neef Infiltra stop

Infiltra Stop is a preventative injection tube for the permanent sealing of cold and construction joints in concrete, pipe penetrations and voids between slurry walls and slabs, etc. Where new and old concrete will join an injection tube is installed. When water is infiltrating into the joint, a De Neef injection grout is injected through the PVC end pieces, which protrude out of the concrete at easily accessible places. This way the joint is sealed. Preferably, the injection will be executed after curing and setting of the concrete. The leaking joints can thus be permanently sealed.



Product
40m Kit

De Neef Bentoject

Is a combination of a hydrophilic bentonite strip and a post-injectable injection tube into one system as a high performance waterstop for the sealing of construction joints in concrete.

Bentonite outer skin:

Swells in contact with water to a maximum of 400%* of original dry volume. Does not dissolve in water and is non-polluting.

Inner injectable tube:

Can be injected at any time for localized leaks. Can be injected with DeNeef polyurethane resins, acrylic resins, and micro-fine cements.

Coverage : 40m kit with all fixings and connections required.

Flexcrete Fastfill WP

A very rapid setting polymer modified cementitious mortar for arresting water seepage and infiltration under pressure through cracks, joints and voids in concrete and masonry. Can also be used for rapid sealing and jointing around pipework or in water retaining structures. It is non shrink which helps maintain a high bond strength ensuring a durable watertight seal. Sets in 2 minutes.

Yield: 4.25 ltrs

Size

8kg



Flexcrete fastfill WP



Sika 4a Waterstop

A ready to use quick setting leak stopping liquid which is mixed with water and ordinary portland cement to produce a paste for leak stopping against high and moderate water pressure infiltrations in concrete, rock or masonry. Does not contain any chlorides and is suitable for potable water contact. In use it is diluted with water 1:1 and mixed with OPC at a 1:3 ratio. Sets in 15-45 seconds.

Size

5ltr



De Neef Pipe Plug

Unique kit composed of a 1-component polyurethane resin with accelerator, designed to cut off water leaks through pipes, wire conduits, cable transits. Will expand 5 times in volume after approx. 60 - 90 seconds.

Size

Box 5 kits



KÖSTER KD-System

The environmentally friendly KÖSTER KD-System stops active water ingress and safely seals off pressurized water from the negative side. It is resistant to salts which are harmful to the building structure and to aggressive substances which are present in the ground. Salts will not detach the fully cured KÖSTER KD-System coating from the substrate.

KÖSTER KD 1 Base Fast curing mineral sealing slurry with excellent resistance to aggressive ground water and high water pressure

KÖSTER KD 2 Blitz highly reactive powder with extremely short setting time With application of the dry powder, active water leakages are sealed within seconds

KÖSTER KD 3 Sealer Extremely low viscosity silicifying liquid. The active ingredients penetrate deeply into the substrate and react to form an insoluble compound. The pores are plugged and permanently sealed through the mineralisation process.

Coverage : Approx 0.5-1m²

Size

2.5kg



Active leaks....



.....stopped.....



.....in seconds

Cementitious Waterproofing



Size
30kg A+B

Flexcrete Cementitious Coating 851

Two component, thixotropic, cementitious modified polymer coating with high adhesion to both concrete and steel. Designed for internal and external structural waterproofing of concrete and other mineral substrates. Resists positive and negative pressure under 100m head in water retaining and below ground structures as well as roofs and decks. 2mm is equal to 1000mm of concrete cover

WRAS, DWI, BBA approved.

Coverage: 8.33m² @ 2mm



Size
25kg

Flexcrete Monolevel 844SP

Fully waterproof, single component, thixotropic, polymer modified, cementitious repair mortar with high adhesive properties, allowing it to be used as a waterproof screed, as well as a filler, for filling minor voids and defects to provide a fair faced finish. 1mm of 844SP is equal to 1000mm concrete cover.

WRAS & DWI approved.

Coverage: 5m² @ 3mm



Size
30kg A+B

Flexcrete Cemprotect Elastic

Elastomeric, cementitious modified, polymer-rich coating which maintains its flexibility under permanent immersion and when exposed externally. It is ideally suited for waterproofing and protecting concrete and masonry structures which exhibit cracking and where further movement is expected. 2mm coat provides the equivalent to 135mm of good quality concrete cover. Can be applied to damp substrates in temperatures down to 5°C

Coverage: 9.4m² @ 2mm



Size
15kg

Flexcrete Cemprotect E942

Incorporates the benefits of copolymer and epoxy resin technologies into a water based cementitious system to give a hard, durable coating with excellent resistance to water, chloride ions, oxygen and aggressive chemicals. Can be used as a stand-alone anti-corrosion coating for ferrous metals as well as waterproofing and protection of concrete where enhanced chemical and abrasion resistance is needed.

Coverage: 8.1m² @ 2mm



Size
15kg

RIW Cementseal

Used to prevent water ingress into basements, cellars and other below ground structures. The product is suitable for use on exposed or inverted roofing and for podium waterproofing. It can also be used for temporary waterproofing in new construction, to protect from water ingress in order to allow finishing trades to access areas underneath in fast track construction. Resist up to 100m head of positive and negative water pressure.

Coverage: 4m² @ 2mm

RIW Cementflex

Suited for waterproofing and protecting concrete and masonry structures which exhibit cracking, and where further movement is expected. Typical applications include preventing water ingress into basements, cellars and other below ground structures. The product can also be used for sealing water tanks, waterproofing of exposed or buried roofs, and as a crack isolation membrane on concrete floors or screeds.

Coverage: 4.7m² @ 2mm

Cementitious Waterproofing

Sika 1 Pre-bag Waterproofing System

When mixed with the diluted **Sika 1** liquid waterproofing admixture they provide the multicoat components for the structural waterproofing and waterproof render systems. Internal waterproofing render and screed for use above and below ground level.

Coverage : 2m² @ 6mm thickness per bag - plus the addition of **Sika 1 Liquid**. Refer to data

Product	Size
Sika 1 Spritz & Bonding Coat	25kg
Sika 1 Render Mortar	25kg
Sika 1 Finishing Mortar	25kg
Sika 1 Screed Mortar	25kg
Sika 1	5ltr
Sika 1	25ltr



Crack & Joint Waterproofing

Sikadur Combiflex SG System

Sikadur-Combiflex® SG is a flexible prefabricated waterproofing tapes based on modified flexible Polyolefin (FPO) with advanced adhesion. Highly elastic, rot-proof and chemically resistant sealing sheet. Ideal for sealing construction joints, expansion joints, connection joints, cracks and fissures. **WRAS** and **DWI** approved product

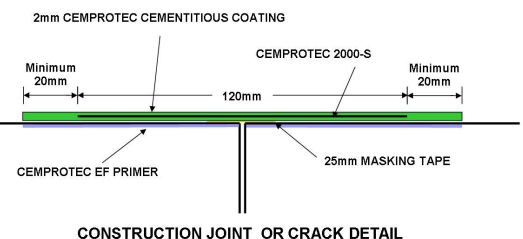
Product / Size
Sikadur 31CF / 6kg
Sikadur 31DWi 6kg
Combiflex 1mm x 10cm x 25m
Combiflex 1mm x 20cm x 25m
Combiflex 2mm x 20cm x 25m
Combiflex 2mm x 30cm x 25m



Flexcrete Cemprotect 2000-S

Advanced, elastomeric, highly tear resistant, breathable, waterproof composite tape, which is embedded in the Cemprotect range of cementitious coatings to give a highly flexible, impermeable seal over "live" cracks and expansion or construction joints in waterproofing applications. Permanently elastomeric composite tape exhibiting over 600% elongation. **WRAS** Approved.

Product / Size
2000's 120mm x 10m
2000's 120mm x 50m
2000's 200mm x 50m
2000BJT x 10m
Cemprotect E942 x 15kg
Cemprotect 851 x 30kg
Cemprotect EF Primer 5ltr



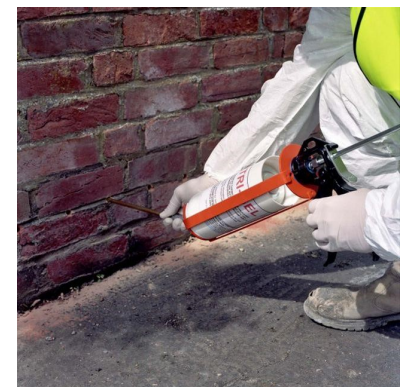
DPC Injection

Tri-Gel DPC

Advanced chemical damp-proofing DPC gel, which guarantees effectiveness in damp walls. The gel allows placement in horizontally drilled holes without dripping or the use of special pumps. Easy to use, low odour and water soluble. Faster to install than traditional pressure injection systems.

Coverage: Refer to data

Size
Box 12 x 1ltr
Application Gun
Injection Nozzle



NOTES